

scanO

AI FOR PATIENTS, PRACTICES & PARTNERS



ACCELERATED BY:
Google





PORTABLE

Splits in two for effortless portability, equipped with wheels



DESIGNED FOR ALL

Seamless scanning for all ages; vertical camera movement adjusts to any height



INSANELY POWERFUL

Google Cloud enables unlimited processing power



22-INCH TOUCH

facilitates effortless interaction across all age groups



LIGHTENING SPEED

Detailed screening under 10 seconds is a reality with AI



BUILT TO LAST

Comes with 3 years of warranty and 24x7 tech support

AI CAMERA

FUTURE-PROOF DENTAL SCREENING



ACTIVE LEARNING

Automatically finds the mouth and heads straight for the teeth and jaw



TILT MOVEMENT

AI tilt movement to auto-adjust the camera focus towards patient's upper and lower jaw



NON INTRUSIVE

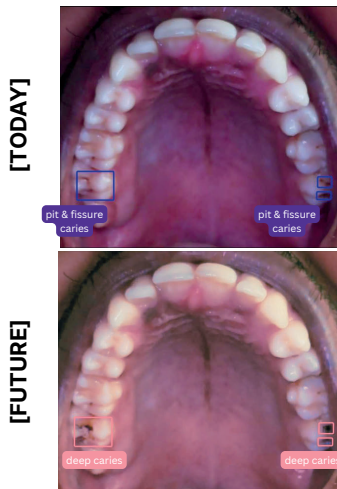
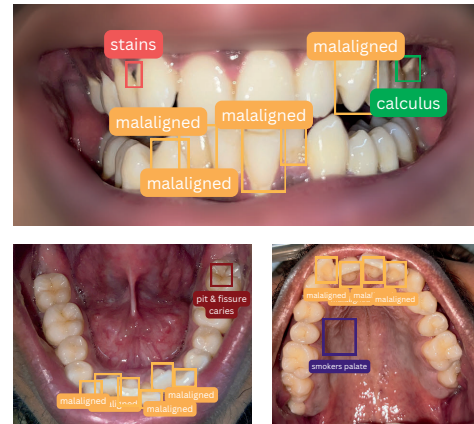
AI-powered dental health screening camera, revolutionizing oral care with precision imaging from a distance of a foot



POWERED BY ADVANCED AI VISION MODELS

TOOTH AI

- Trained on **1Mn+** images
- Detects 40+ hard tissue diseases
- Report under 5 seconds

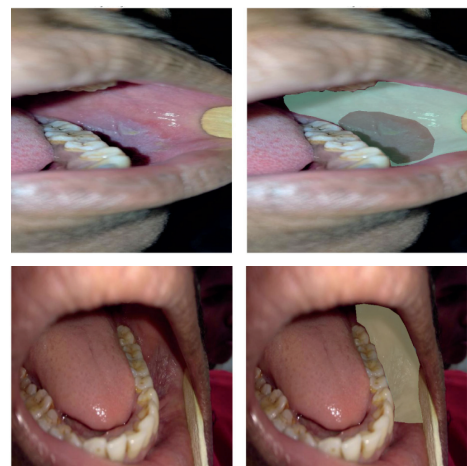


PREDICT AI

- Simulates real-time worsening of untreated cavities & gum issues
- Helps patients visualize future risks instantly

TissueAI

- Early detection of high-risk oral conditions
- Helps practitioners & patients spot Aphthous ulcers, Lichen planus, Erythroplakia, Candidiasis and more



FACE AI (launching soon)

- AI Model for Facial Aesthetics
- Simulates post-treatment outcomes using facial imaging

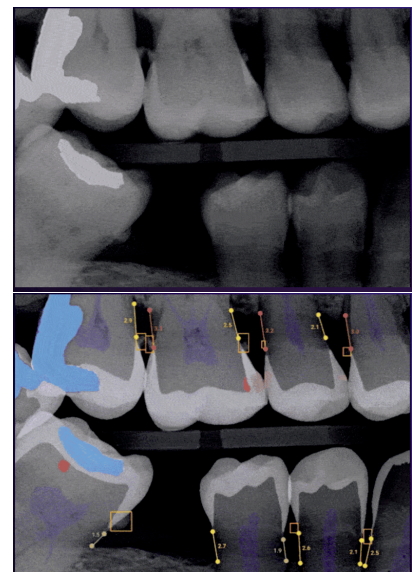


Smile AI (launching soon)

- Real-time simulation of smile correction
- Helps patients visualise how smile will look like post treatment

XRai AI (launching soon)

- AI Model for Dental Radiographs
- Detects pathologies from OPGs and bitewings with precision.
- Detects caries, bone loss, and impacted teeth.





NAVI

- AI Assistant for Guided Screenings
- Provides real-time voice and visual guidance during AI screenings
- Ensures every scan is interactive, effortless, and user-friendly

NOVA (launching soon)

- Performs autonomous AI screenings.
- Moves independently to assist patients.
- Displays reports, insights, and instructions.





Patient Management & Engagement (web + app)

manage multi branch/multi chair practice

Brief overview of analytics

upcoming clinic appointments

smart analytics dashboard of patient scans

Disease-wise split to help you identify untapped revenue potential

Real-time update of latest scans done on scanO air

Color coded bounding boxes for each disease

View the PDF sent to patient's WhatsApp number

Add patient's diagnostic files

Generate and issue invoice

Create and send prescription and treatment plan

One-click book appointment for patients

Create new patient profile

Initiate AI scan using engage

Call/video call & chat with patient

View and edit your patient's profile

Comprehensive view of all activities done by your patient across scanO app & scanO air

manage your scanO air from engage app

enable/disable:

- OTP verification
- Token mode on air
- Automatic reports sent to patient's WhatsApp number

configure sensitivity of flash, angle, camera settings of air

configure wireless printer for automatic report printouts

“Designed to **build trust, boost treatment acceptance, & bring patients back.**”

WORLD'S FIRST & ONLY AI ECOSYSTEM FOR ORAL CARE

scanO engage
for your clinic

fast & contactless
AI DENTAL CHECKUPS

scanO air

scanO user app
for your patients

- 
CONTACTLESS SCREENING
 World's first non-intrusive experience of dental screening
- 
AI VOICE
 Available in 15+ regional languages with AI voice
- 
INTERACTIVE REPORT
 Patient-centric report with animated videos
- 
ENGAGE & RETAIN
 Suite of features to manage & engage patients
- 
DISEASE PROGRESSION
 Real-time GenAI to visualise the disease worsening

REAL STORIES. REAL RESULTS.

Across India, dentists are using scanO AI to **simplify screenings, build patient trust, & increase case acceptance.**

Trust at First Scan

100%

increase in case acceptance

“Even before diagnosis, patients believe they’ll get the best care because they see AI.”

Dr. Devyani Dev

Berhampur Dental Clinic, Brahmapur (Odisha)

From Confusion to Clarity

2x

faster consultations

“Awareness comes before treatment. scanO makes patients realize what’s actually happening in their mouth.”

Dr. Dinesh Mohale

Mohale Dental Clinic, Washim (Maharashtra)

Awareness to Action

80%

camp case acceptance

“scanO turned awareness into action. Now every camp creates informed patients who return for care.”

Dr. Srinath Reddy

Srinath Dental Clinic, Nellore (Andhra Pradesh)

Changing Perceptions

3x

faster diagnostics

“scanO helps me explain better, and patients get convinced faster. It’s a perception changer.”

Dr. Bharath

Smile Dental Care, Mysore (Karnataka)

Trusted by **1000+ practices**. **1.6M+ patients** screened.
& we're just getting started

world's first & only AI oral health revolution



ACCELERATED BY:


Exclusively Distributed By:

AL THANAYA PHARMACEUTICALS LLC
+971 52 462 1799 , +971 4 8359719 , +971 4 3465001

www.althanayadubai.com