

Innovate with Premier®



## Premier® Instruments

Every procedure you perform shapes how your patients feel about you. That's why we engineer solutions you can count on to deliver reliable results every day.

**new!** PremierAir™ Single-end Explorers and Probes

# Instruments

| Instrumente | Instrumentos | Instruments |

---

## Diagnostic

Page 2-11

| Diagnose | Diagnóstico | Diagnostiques |

---

## Hygiene

12-24

| Hygiene | Higiene | Hygiène |

---

## Operative

25-44

| Restorative Zahnheilkunde | Operatorio | Opérateiros |

---

## Endodontic

45-50

| Wurzelbehandlung | Endodoncia | Endodontiques |

---

## Perio/Oral Surgery

51-81

| Parodontal-/Kieferchirurgie | Periodoncia/Cirugía oral

| Chirurgie parodontale et buccale |

---

## Cassettes and Instrument Care

81-82

| Pflege der Kassetten & Instrumente | Cassettes y mantenimiento de instrumentos

| Cassettes et soin des instruments |

---



Premier's state-of-the-art instrument plant is located in Philadelphia, PA USA.

# Diagnostic

| Diagnose | Diagnóstico | Diagnostiques |

---

## Explorers

Page 3-4

| Sonden | Exploradores | Sondes exploratrices dentaires |

---

## Mirror Handles

4

| Mundspiegelgriffe | Mangos de espejo | Manches à miroirs |

---

## Probes

5-9

| Sonden | Sondas | Sondes |

---

## Dressing Pliers

10-11

| Zahnärztliche Pinzetten | Pinzas | Pincas à pansement |

---

**Explorers** | Sonden | Exploradores | Sondes exploratrices dentaires |  
available in economical 12-packs, where indicated

**Double-end**



CF 2 • 1003522      CF 2XT • 1003119      OCT 2 • 1003502      PremierAir CF 2 • 1003564  
CF 2 12-PK • 1003963



CF 2CH • 1003528



CF 3CH • 1003527      PremierAir CH3 • 1003563  
CF 3CH 12-PK • 1003965



CF 5 • 1003523      CF 5XT • 1003120      OCT 5 • 1003503      PremierAir 5 • 1003560  
CF 5 12-PK • 1003964



CF 6 • 1003524



CF 6/23 • 1003526      OCT 6/23 • 1003506      PremierAir 6/23 • 1003565



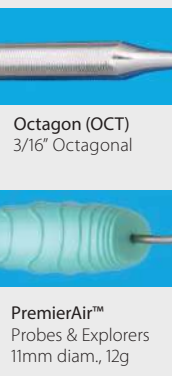
CF 11/12 • 1003529



CF ODU-H 11/12 • 1003549      PremierAir OD 11/12 • 1003562



CF TU 17/23 • 1003509      PremierAir TU 17/23 • 1003566



**Octagon (OCT)**  
3/16" Octagonal

**PremierAir™**  
Probes & Explorers  
11mm diam, 12g

**Cavity Finder™ Explorer** • Improved tactile sensitivity via multi-piece construction.  
• Thin, yet sharp and durable tips.

| Sonden | Exploradores | Sondes exploratrices dentaires | **Explorers**  
available in economical 12-packs, where indicated



**Single-end**



CF 6 • 1003512      CF 6XT • 1003116      OCT 6 • 1003492      PremierAir CF 6 • 1003553  
CF 2 12-PK • 1003963



CF 6L • 1003513



CF 6L-H • 1003511



CF 17 • 1003514



CF 23 • 1003515      CF 23XT • 1003118      OCT 23 • 1003495      PremierAir CF23 • 1003551  
CF 23 12-PK • 1003962



PremierAir CF 23XT • 1003552

| Mundspiegelgriffe | Mangos de espejo | Manches à miroirs | **Mirror Handles**



Cone Socket • 1003582



Cone Socket with Big Easy® Handle • 1005115



Simple Stem • 1003581



Simple Stem with Big Easy Handle • 1005120

**Premier® PerioWise® "The Friendly Probe"™**

- Slightly flexible for greater patient comfort.
- Clearly visible when using intra-oral camera.
- Safe around implants
- Autoclavable



Original 3-5-7-10mm

• 9006107 (3-pack)

• 9006102 (6-pack)

• 9006105 (12-pack)



3-6-9-12mm

• 9006108 (3-pack)

• 9006104 (6-pack)

• 9006106 (12-pack)

**"Pearls for Your Practice"**  
Dental Economics - April 2008

**A Fast and Accurate Screening System<sup>1</sup>**

*The patient Screening Report helps with patient education and compliance.*

- Ideal for full examination or a quick screening
- Easy-to-read 3mm green band indicates periodontal health
- Reaching a red mark indicates the possible presence of periodontal disease



**"Most Highly Rated"\***  
**FREE screening system components available from Premier!**



UNC 12

• 9006120 (3-pack)

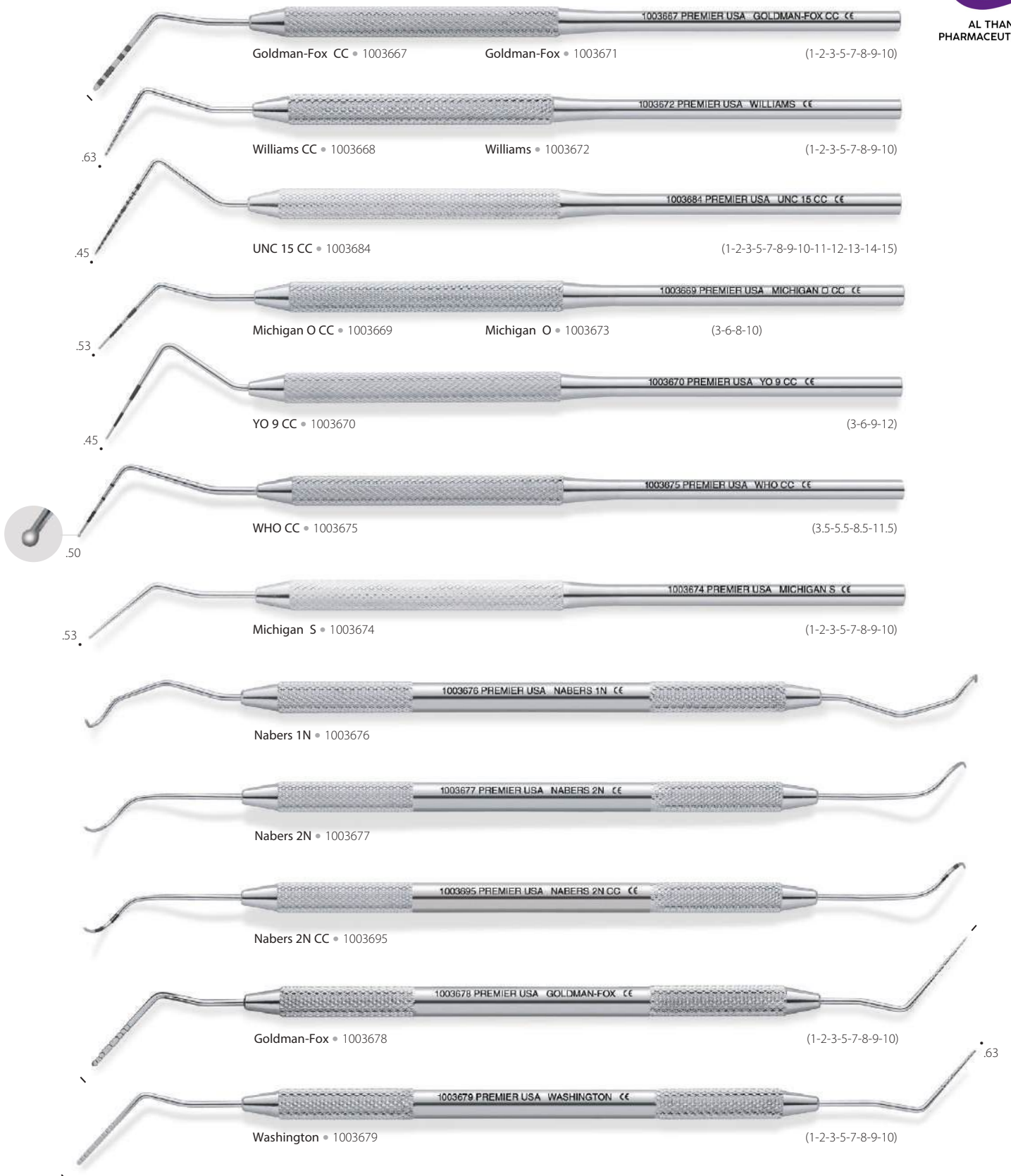
• 9006121 (6-pack)

• 9006122 (12-pack)

1mm increments up to 12mm

- Provides precision measuring of pocket depths with markings indicating 1mm increments up to 12mm.
- Ideal for complete periodontal examinations.

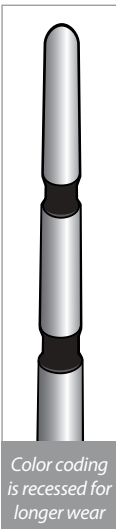
| Sonden | Sondas | Sondes | **Probes**



Tip diameter measurements in millimeters.  
CC indicates color coded.

Probes | Sonden | Sondas | Sondes |

**Clear-View™** long lasting, easy to read, color-coded, metal probes



| Sonden | Sondas | Sondes | **Probes**



**Clear-View™** long lasting, easy to read, color-coded, metal probes



UNC 12 • 1003687 PremierAir • 1003637 (1-2-3-4-5-6-7-8-9-10-11-12)

UNC 15 • 1003640 PremierAir • 1003635 (1-2-3-4-5-6-7-8-9-10-11-12-13-14-15)

Probex UNC 12 • 1003683 (1-2-3-4-5-6-7-8-9-10-11-12)

PremerAir Who CV • 1003636

PremerAir Probex Marquis 12 CV • 1003600 (3-6-9-12)

PremerAir Probex Williams CV • 1003601  
Probex Williams • 1004926 (1-2-3-5-7-8-9-10)

PremerAir Probex UNC 12 CV • 1003604  
Probex UNC 12 • 1003683 (1-2-3-4-5-6-7-8-9-10-11-12mm)

PremerAir Probex UNC 15 CV • 1003602

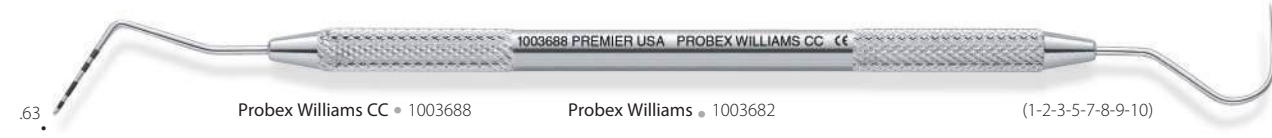
PremerAir Probex Who CV • 1003603 (3.5-5.5-8.5-11.5)

- PremerAir™**
- Better function, less fatigue
  - Comfortable, balanced, ergonomic handle with non-slip grip requires less pressure to maintain control
  - Exceptionally light, rugged polymer handles for a long working life
  - Made to high standards by master craftsmen in the U.S.A.

Tip diameter measurements in millimeters.



**Probes** | Sonden | Sondas | Sondes |



| Zahnärztliche Pinzetten | Pinzas | Pincas à pansement | **Dressing Pliers**

**Dressing**



4½" (11.5 cm) • 9085276



5½" (14.0 cm) • 9085278



Adson Dressing 4¾" (12.1 cm) • 9085295



Perry • 9065082



College 6" (15.0 cm) • 9065081



Non-Pinch 6" (15.0 cm) • 9065083



**Dressing Pliers** | Zahnärztliche Pinzetten | Pinzas | Pinces à pansement |



# Hygiene

| Hygiene | Higiene | Hygiène |

---

## Scalers

Page 14-16

| Zahnreinigungsinstrumente | Raspadores de sarro | Instruments à détartrer |

---

## Instrument Sharpener

15

| Instrumentenschleifer | Afilador de instrumentos | Affûteur pour instruments |

---

## Curettes

17-23

| Küretten | Curetas | Curettes |

---

## Ultrasonic Inserts

24

| Ultraschalleinsätze zur Zahnsteinentfernung |

| Insertos ultrasónicos | Pointes ultrasoniques |

---

## new! PremierAir™

### Hygiene and Diagnostic Instruments

- Comfortable, balanced, ergonomic handle with non-slip grip means less pressure to maintain control and less hand fatigue
- Exceptionally light, rugged polymer handles and tested extensively to ensure a long working life
- Made to high standards by master craftsmen

### Hygiene Instruments

- Precision tips made with 440A stainless steel and SmartSharp® Technology keep edges sharp and well defined

### Probex and Explorers

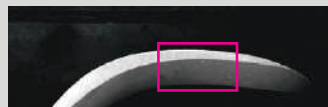
- Probes are easy to read and resistant to wear
- Explorers have excellent tactile sensitivity and sharp points for easy detection of tooth texture and surface irregularities



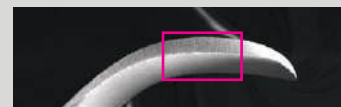
## Premier® SmartSharp® Technology

Premier's innovation in sharpening technology allows you to start sharp and work smart:

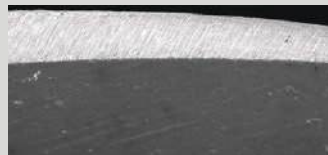
- Easily maintain sharpness – proprietary process ensures a well defined edge you can easily re-sharpen as needed
- Apply less pressure and use fewer strokes – achieve a glass-like tooth surface
- SmartSharp® available on Premier Scalers and Curettes – at no additional cost



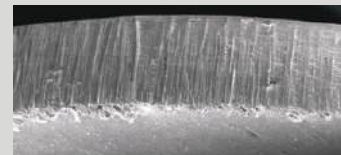
Premier® Instrument Edge



Leading Competitor Edge



A sharp edge ensures a smooth, precise cut with less hand fatigue.



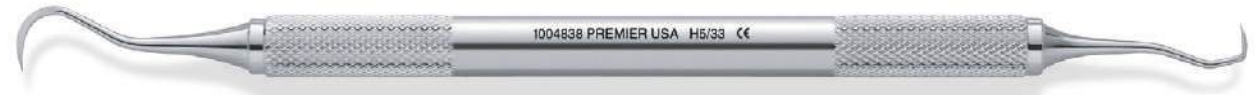
An irregular edge is less efficient and can lead to more hand fatigue.

| Zahnreinigungsinstrumente | Raspadores de sarro | Instruments à détartrer | **Scalers**

**Sickle**



H6/H7 • BEUL-05621 • BE-1005040 • LT-1004839 • PremierAir-1004689



H5/33 • BEUL-05629 • BE-1005060 • LT-1004838 • PremierAir-1004688



U15/30 • BEUL-05631 • BE-1005065 • LT-1004842 • PremierAir-1004692



U15/33 • BEUL-05633 • BE-1005070 • LT-1004843 • PremierAir-1004693



Morse 0/00 • BEUL-05695



NV1 Anterior • BEUL-05690 • BE-1005850 • LT-1004850 • PremierAir-1004681



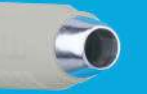
NV2 Posterior • BEUL-05691 • BE-1005851 • LT-1004851 • PremierAir-1004682



NV4 • BEUL-05684 • BE-1005854 • LT-1004854 • PremierAir-1004684



1/2" diam., 16g



**Big Easy® (BE)**  
7/16" diam.  
23g



**Light Touch™ Round (LT)**  
5/16" diam.  
21g

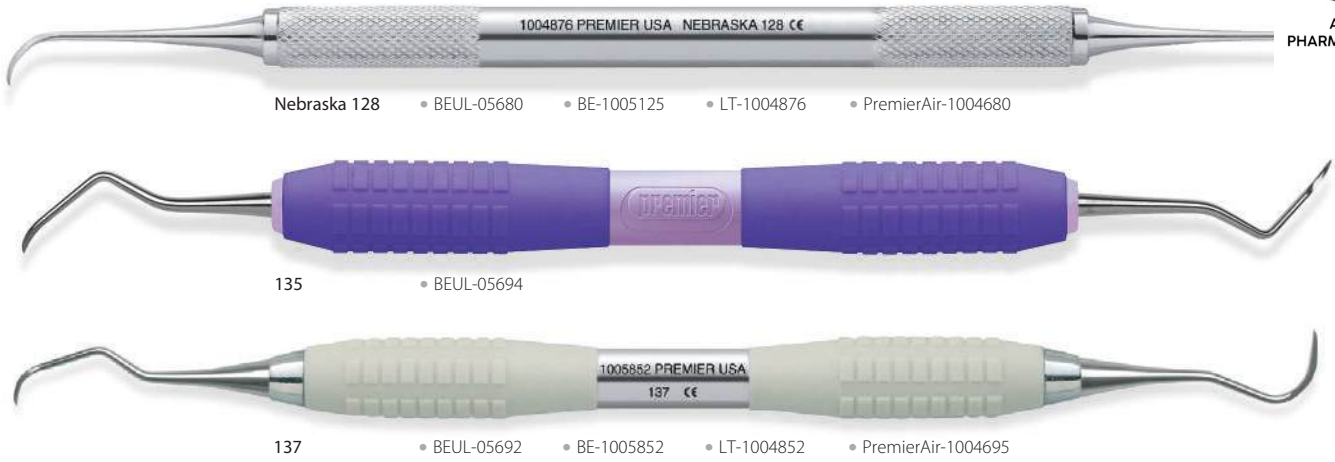


**PremierAir™**  
Scalers & Curettes  
11mm diam., 15g


Big Easy - U.S. Patent Number D428,652.  
\* Big Easy Scalers & Curettes, Townie Choice Awards, 2003.

**Scalers** | Zahnreinigungsinstrumente | Raspadores de sarro | Instruments à détartre

**Sickle**



**Instrument Sharpener** | Instrumentenschleifer | Afilador de instrumentos | Affûteur pour instruments




**Now, you can quickly sharpen scalers and cures correctly – without damaging the cutting surface.**


9048200 - Autoclavable D.I.S.C. Instrument Sharpener (Metal)  
9048093 - D.I.S.C. Replacement Stone

*Easy-to-follow instructions for all instruments included with D.I.S.C.*

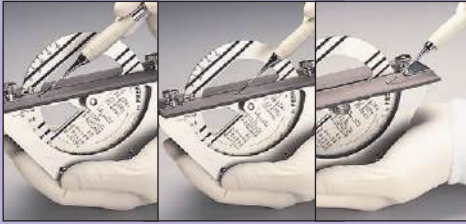
## Extend Instrument Life...Enhance Your Efficiency



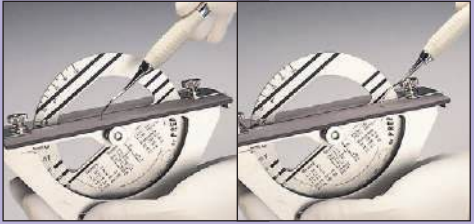
**1** Turn the protractor dial to the appropriate dial setting (Example: "G" for any Gracey 1-10).



**2** Hold the instrument with the handle parallel to the Instrument Reference Lines. Position the working end towards the center.



**3** Keeping the wrist stiff, use a pull stroke with moderate pressure (repeat 5 or 6 times).



**4** On a curette, roll the instrument as you finish your pull stroke to maintain the rounded toe.

*D.I.S.C. Sharpening stones, autoclavable and available separately, never need oil or water as is required with Arkansas stones.*

| Zahnreinigungsinstrumente | Raspadores de sarro | Instruments à détartrer | **Scalers**

**204 Series**



204

• LT-1004840

204 S

• BEUL-05623 • BE-1005045 • LT-1004837 • PremierAir-1004696

H-204 S

• BEUL-05625 • BE-1005050 • LT-1004846 • PremierAir-1004687

H-204 SD DISTAL

• BEUL-05627 • BE-1005055 • LT-1004847 • PremierAir-1004697

**Jacquette**



Jacquette 1/15

• LT-1004832

Jacquette 15/15

• LT-1004833

Jacquette 2/3

• LT-1004834

Jacquette 25/35

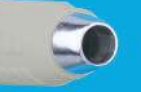
• LT-1004835

Jacquette 34-35

• BEUL-05645 • BE-1005100 • LT-1004830 • PremierAir-1004686



1/2" diam., 16g



**Big Easy® (BE)**  
7/16" diam.  
23g



**Light Touch™ Round (LT)**  
5/16" diam.  
21g



**PremierAir™**  
Scalers & Currettes  
11mm diam., 15g

**Curettes** | Küretten | Curetas | Curettes |

**Columbia**



Columbia 2L/2R • BE-1005028 • LT-1004800



Columbia 4L/4R • BEUL-05615 • BE-1005030 • LT-1004801 • PremierAir-1004651



Universal Implant Scaler (Columbia 4L/4R) 2 pack • 9061401  
5 pack • 9061400



Columbia 13/14 • BEUL-05617 • BE-1005035 • LT-1004802 • PremierAir-1004652

**McCall**



McCall 13/14 • BEUL-05635 • BE-1005075 • LT-1004823



McCall 13S/14S • BEUL-05639 • BE-1005085 • LT-1004821 • PremierAir-1004671



McCall 17/18 • BEUL-05637 • BE-1005080 • LT-1004824



McCall 17S/18S • BEUL-05641 • BE-1005090 • LT-1004822 • PremierAir-1004672

**Younger-Good**



Younger-Good 7/8 • LT-1004875



H Younger-Good 7/8 • BEUL-05693

**Barnhart**



Barnhart 1/2 • BE-1005105 • LT-1004827



Barnhart 5/6 • BEUL-05643 • BE-1005110 • LT-1004829 • PremierAir-1004679



1/2" diam., 16g



**Big Easy® (BE)**  
7/16" diam.  
23g



**Light Touch™ Round (LT)**  
5/16" diam.  
21g



**PremierAir™**  
Scalers & Curettes  
11mm diam., 15g

**Implant Scalers**

- Thin, slightly flexible and safe for use on implants
- Autoclavable (273°F/134°C)



Universal (Columbia 4L/4R) 2 pack • 9061401  
5 pack • 9061400



Facial (Goldman-Fox 5) 2 pack • 9061402  
5 pack • 9061403



137 Anterior 2 pack • 9061421  
5 pack • 9061420



204 Posterior 2 pack • 9061423  
5 pack • 9061422

## Curettes | Küretten | Curetas | Curettes |

### Gracey



**Gracey 1/2** • BEUL-05601 • BE-1005001 • LT-1004810 • PremierAir-1004660  
Short shank for incisors and cuspids



**Gracey 3/4** • BEUL-05603 • LT-1004811 • PremierAir-1004661  
Short contra-angle shank for incisors and cuspids



**Gracey 5/6** • BEUL-05605 • BE-1005010 • LT-1004812 • PremierAir-1004662  
Medium shank for cuspids and molars



**Gracey 7/8** • BEUL-05607 • BE-1005015 • LT-1004813 • PremierAir-1004663  
Medium contra-angle shank for bicuspids and molars, buccal and lingual surfaces



**Gracey 9/10** • BEUL-05609 • LT-1004814  
Long contra-angled for molars with more acute blade angle



**Gracey 11/12** • BEUL-05611 • BE-1005020 • LT-1004815 • PremierAir-1004665  
Triple angulation for easy access to buccal/mesial and lingual/mesial surfaces of premolars and molars



**Gracey 13/14** • BEUL-05613 • BE-1005025 • LT-1004816 • PremierAir-1004666  
Triple angulation for easy access to distal/posterior surfaces of premolars and molars



**Gracey 11/14** • LT-1004817  
For easy access to a facial or lingual sextant with a single instrument.



**Gracey 15/16** • BEUL-05653 • BE-1005026 • LT-1004819  
Angled shank, designed to reach mesial surfaces of posterior teeth



**Gracey 17/18** • BEUL-05655 • LT-1004820  
Highly angled shank for reaching distal surfaces of posterior teeth



**Gracey-Rigid**



Gracey 1/2R

• LT-1004790

Gracey 3/4R

• LT-1004791

Gracey 5/6R

• LT-1004792

Gracey 7/8R

• LT-1004793

Gracey 11/12R

• LT-1004795

Gracey 13/14R

• LT-1004796

Gracey 15/16R

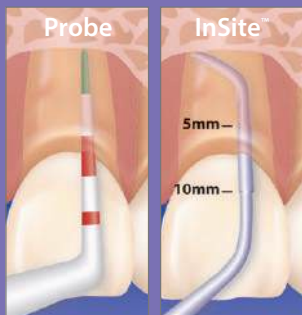
• LT-1004797

Ultralite (BEUL)  
1/2" diam., 16g

Big Easy® (BE)  
7/16" diam.  
23g

Light Touch™  
Round (LT)  
5/16" diam.  
21g

PremierAir™  
Scalers & Curettes  
11mm diam., 15g



After probing, InSite™ scalars provide added visual confirmation that you have reached the base of the pocket.

**Gracey Variations**

Pocket Scalers (PS) and Mini Pocket Scalers (MPS) have a slender and longer terminal shank to provide access into deeper pockets. MPS has the same slender tip design as PS, but with half the blade length. InSite PS and MPS have a depth gauge at 5mm through 10mm offering an excellent visual guide.

**Big Easy Ultralite** Pocket Scalers (PS) and Mini Pocket Scalers (MPS) do NOT feature the depth gauge found in InSite Scalers

**Rigid** Gracey designs have a thicker shank than the original Graceys, but are overall slightly shorter for increased strength when removing heavy calculus.



BEUL PS

BEUL MPS

InSite PS

InSite MPS

Gracey

Rigid

Curettes | Küretten | Curetas | Curettes |

Pocket Scalers



PS 1/2 • BEUL-05660



PS 3/4 • BEUL-05661



PS 5/6 • BEUL-05662



PS 7/8 • BEUL-05663



PS 11/12 • BEUL-05665



PS 13/14 • BEUL-05666



PS 15/16 • BEUL-05667

**Mini Pocket Scalers**



1/2" diam., 16g



MPS 1/2 • BEUL-05670



MPS 3/4 • BEUL-05671



MPS 5/6 • BEUL-05672



MPS 7/8 • BEUL-05673



MPS 11/12 • BEUL-05675



MPS 13/14 • BEUL-05676

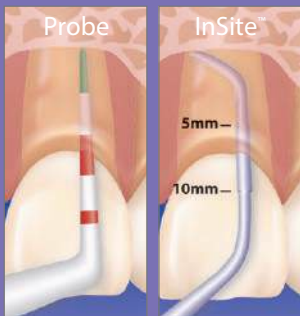


MPS 15/16 • BEUL-05677

Curettes | Küretten | Curetas | Curettes |



**InSite™ Pocket Scalers** (MPS designs shown here)



After probing, InSite™ scalers provide added visual confirmation that you have reached the base of the pocket.

**Gracey Variations**

Pocket Scalers (PS) and Mini Pocket Scalers (MPS) have a slender and longer terminal shank to provide access into deeper pockets. MPS has the same slender tip design as PS, but with half the blade length. InSite PS and MPS have a depth gauge at 5mm through 10mm offering an excellent visual guide.

**Big Easy Ultralite** Pocket Scalers (PS) and Mini Pocket Scalers (MPS) do NOT feature the depth gauge found in InSite Scalers

**Rigid** Gracey designs have a thicker shank than the original Graceys, but are overall slightly shorter for increased strength when removing heavy calculus.



BEUL PS • BEUL MPS • InSite PS • InSite MPS • Gracey • Rigid

## Ultrasonic Inserts

| Ultraschalleinsätze zur Zahnsteinentfernung | Insertos ultrasónicos | Pointes ultrasoniques |

### Big Easy® Ultrasonic Inserts

Big Easy cushion-grip ultrasonic inserts for improved ergonomic grip and comfort.

- Ergonomically designed large 7/16" diameter for maximum comfort and decreased fatigue
- Compatible with most magnetostrictive handpieces

*"Outstanding Product"*  
Big Easy® Ultrasonic Insert



Big Easy Ultrasonic Inserts - Universal • 25K-1005300 • 30K-1005310



Big Easy Ultrasonic Inserts - Triple Bend • 25K-1005305 • 30K-1005315



Big Easy Ultrasonic Inserts - #100 Thin-tip • 25K-1005320 • 30K-1005330



Big Easy Implant Ultrasonic Inserts • 30K-1005336

- Permanently attached PEEK tip will not scratch implants
  - PEEK is considered an advanced biomaterial used in medical implants
  - PEEK is non-abrasive and proven robust for long-lasting insert tips
- Effectively removes biofilm and calculus



Resin Handle Ultrasonic Insert IF-50 - Universal • 25K-1006800 (orange)  
• 30K-1006900 (yellow)



Resin Handle Ultrasonic Insert IF-1000 - Triple Bend • 25K-1006802 (red)  
• 30K-1006901 (purple)



Resin Handle Ultrasonic Insert - #100 Thin-tip • 25K-1006820  
• 30K-1006920

### Cleaning/ Sterilization

Inspect, clean, and sterilize prior to each use.

**Cleaning:** Rinse inserts thoroughly or fully immerse in a mild ultrasonic cleaning solution. Carefully remove gross debris.

Ultrasonic Cleaning: 7-10 minutes - Inserts placed in an ultrasonic cleaning unit. 16-20 minutes - Inserts placed in a cassette.

**Note:** Care should be taken in placing inserts. Do not place under other instruments or mishandle. Damage to the stack can result - deformed, warped or bent stacks can compromise the function of the insert.

**Rinsing:** Thoroughly rinse with tap water and dry completely prior to sterilization. Do not use chemical or surface disinfectants. Do not use phenols.

**Sterilization:** Sterilize using steam autoclave or chemical vapor sterilizer. Follow sterilizer manufacturer's instructions. Sterilize inserts in an instrument cassette or paper pouch in a steam autoclave. Do not sterilize in 100% plastic sterilization pouches. (A combination paper/plastic pouch is acceptable, paper side down.) Steam sterilize for at least 4 minutes at 270°F/132°C or

30 minutes at 250°F/121°C. Do not expose inserts to temperatures above 275°F/135°C or chemical vapor concentrations exceeding manufacturer's recommendations. Do not use Rapid Heat Transfer (Dry Heat) sterilization method.

Do not use cold disinfectant/cold sterilization solutions.

### Optimum Performance

- Insert stacks should be straight and parallel at all times. Bent or warped inserts should be discarded.
- Bent and/or worn tips prevent effective operation of the ultrasonic insert and are subject to breakage. Inserts should be replaced when tip-wear reduces size and shape from original condition.
- Water lines to scaler should be flushed and hand-piece should be filled with water prior to use for most efficient results.
- The O-ring should be carefully maintained to ensure the longest possible life. Maintenance includes water lubrication of O-ring as well as proper seating of insert within the hand-piece.
- Damaged or broken (torn) O-rings should be replaced prior to use.

- Inserts are not indicated for use in restorative dentistry applications.

### Proper Placement of Replacement O-Rings

Proper placement of O-rings will significantly extend the life of the O-rings and provide better ultrasonic scaling.

During installation, the O-ring should be protected from the sharp edges of the insert stack. For 25K inserts, this is the 3/16" x 3/16" x 3.75" dark section of the insert. For 30K inserts, this is the 3/16" x 3/16" x 3.0" dark section of the insert.

- Remove and discard old O-ring.
- Place new O-ring onto a straight drinking straw (1/4" diameter), approximately 1" from the end.
- Slide the straw completely around insert stack, starting with the side of the straw that holds the O-ring.
- Slide O-ring off of the straw and place into appropriate groove. Remove and discard straw.
- Sterilize insert before use.

Make sure you are using the supplied O-rings on your ultrasonic inserts, as other O-rings may not be the appropriate size.

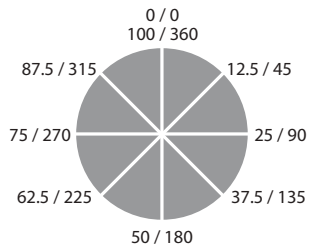
# Operative

| Konservierende Behandlung | Operatoria | Operatoire |

|   |            |
|---|------------|
| <b>Cavity Preparation Instruments</b>   | Page 26-27 |
| Schmelzinstrumente   Instrumentos para la Preparación de Cavidades                |            |
| Instruments pour Preparation de Cavité  |            |
| <b>Excavators</b>   | 27-29      |
| Exkavatoren   Excavadores   Excavateurs   |            |
| <b>Amalgam Carriers/Guns</b>  | 30         |
| Amalgan-Träger /Pistolen   Porta amalgamas   Porte-amalgames/seringues à amalgame |            |
| <b>Applicators</b>  | 31         |
| Applikatoren   Aplicadores   Applicateurs   |            |
| <b>Cord Packers</b>   | 31         |
| Fadenstopfer   Empacadores de hilo   Fouloirs pour fil de rétraction              |            |
| <b>Pluggers/Condensers</b>  | 32-33      |
| Stopfer/Kondensierer   Obturadores/Condensadores   Fouloirs à amalgame            |            |
| <b>Carvers</b>  | 34-36      |
| Modelliermesser   Talladores   Sculpteurs   |            |
| <b>Burnishers</b>   | 36         |
| Polierer   Bruñidores   Brunissoirs   |            |
| <b>Composite/Plastic Filling Instruments</b>                                      | 37-40      |
| Instrumente für Komposit- und Kunststofffüllungen                                 |            |
| Instrumentos de obturación para composite y materiales plásticos                  |            |
| Instruments pour plombages plastiques/composites                                  |            |
| <b>Composite Instruments</b>  | 41-42      |
| Kompositinstrumente   Instrumentos para composite                                 |            |
| Instruments pour composites   |            |
| <b>Crown Removers</b>   | 42         |
| Kronenringabnehmer   Removedores de coronas   Arrache-couronnes                   |            |
| <b>Spatulas</b>   | 43         |
| Spatel   Espátulas   Spatules   |            |
| <b>Laboratory Instruments</b>   | 44         |
| Laborinstrumente   Instrumentos de laboratorio   Instruments pour laboratoire     |            |

## Cavity Preparation Instruments

| Instrumente zur Kavitätenpräparation |  
 | Instrumentos para la preparación de cavidad |  
 | Instruments pour préparation de cavité |



1st # - Centigrade Scale  
 2nd # - Standard Scale

### Black's Formula

A standard method used to describe the size, shape and angulation of cavity preparation instruments, created by Dr. Greene Vardiman Black ("the father of modern dentistry").

Hatchets, chisels and cavity prep instruments have 3 measurements. (x, y, z), based on a circular 100° (centigrade) scale, instead of the typical 360° (astronomical) scale.

x= the width of the blade in tenths of millimeters.

y= the length of the blade in whole millimeters.

z = the angle the blade forms with the long axis of the handle.

A fourth number, used on select angle formers and margin trimmers, is placed between the first two numbers (x, a, y, z).

a= the degree of angle for the cutting edge to the long axis of the handle.

### Carver - Black



BC 89/92 • 1003240

### Chisel



4 • 1003133

### Hatchet - Black



BC 8/9 • 1003189

(10-7-14)



BC 51/52 • 1003226

(15-8-12)



BC 53/54 • 1003227

(10-6-12)

### Hatchet - California



CC 17/18 • 1003295

(10-6-14)

## Cavity Preparation Instruments

| Instrumente zur Kavitätenpräparation | Instrumentos para la preparación de cavidades |  
| Instruments pour préparation de cavité |

### Margin Trimmer - Black



### Margin Trimmer - California



## Excavators | Exkavatoren | Excavadores | Excavateurs |

### Black



### California



| Exkavatoren | Excavadores | Excavateurs | **Excavators**



**Excavators** | Exkavatoren | Excavadores | Excavateurs |



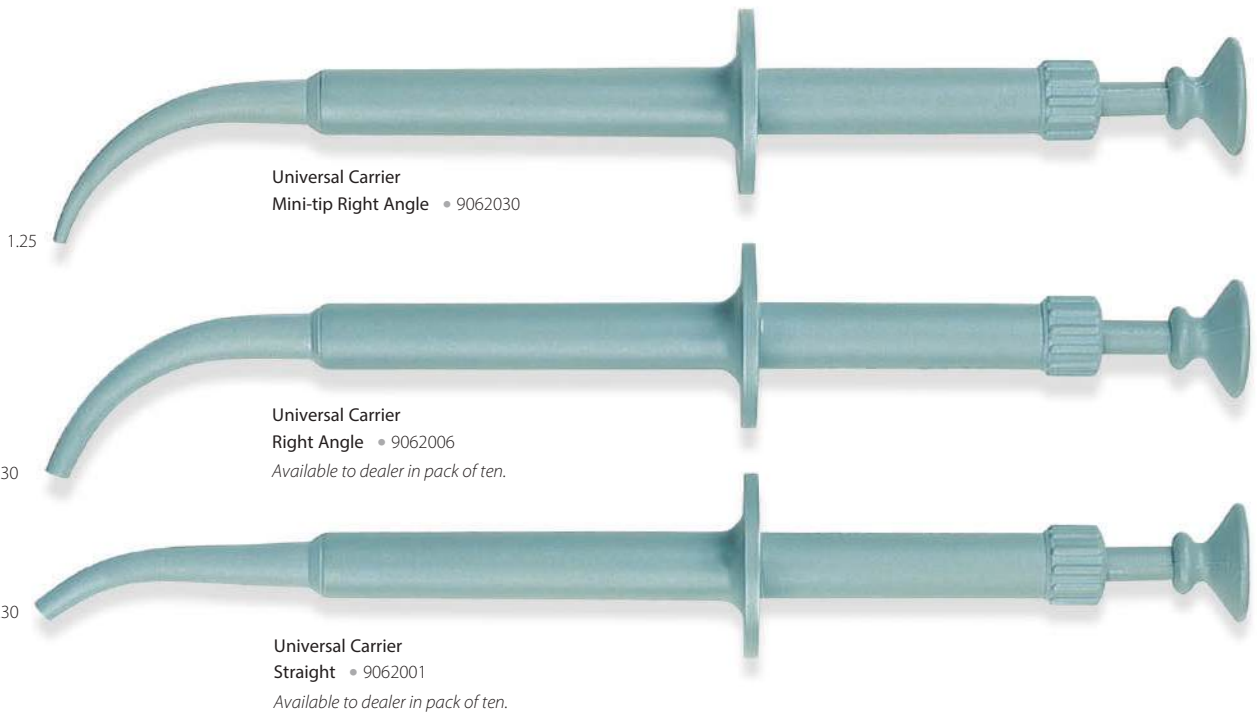
*Endodontic Excavators (31LS, 31L, 32L, 33L) available on page 49.*

## Amalgam Carriers/Guns

| Amalgam-Träger /Pistolen | Porta amalgamas | Porte-amalgames/seringues à amalgame |



Amalgam Carrier DE Regular (2.00mm) / Large (2.75mm) • 9062201  
 Also available DE Large (2.75mm) / Jumbo (3.00mm) • 9062202



1.25 Universal Carrier Mini-tip Right Angle • 9062030

2.30 Universal Carrier Right Angle • 9062006  
 Available to dealer in pack of ten.

2.30 Universal Carrier Straight • 9062001  
 Available to dealer in pack of ten.

Universal Carriers are unique placement instruments with a sleek design. They enable the operator to transport and place amalgam while minimizing finger fatigue.

### REPLACEMENT PARTS FOR UNIVERSAL CARRIERS

| Item   | Item No. |
|--|----------|
| Universal Carrier Nose Tip Straight          | 9062011  |
| Universal Carrier Nose Tip Right Angle       | 9062013  |
| Universal Carrier Plunger Straight           | 9062015  |
| Universal Carrier Plunger Right Angle        | 9062017  |
| Universal Carrier Spring (Fits all carriers) | 9062021  |
| Mini-plunger Right Angle                     | 9062034  |

## Applicators | Applikatoren | Aplicadores | Appicateurs |



## Cord Packers | Fadenstopfer | Empacadores de hilo | Fouloirs pour fil de rétraction |



## Pluggers/Condensers

| Stopfer/Kondensierer | Obturadores/Condensadores | Fouloirs à amalgame |



### Black



### Bredall - Smooth



#### Bredall Pluggers/Condensers have a unique rest.

Condensation pressure is directed to gingival and occlusal areas - not angulated towards the matrix bands. This is especially important when the operator is seated, because the dentist does not have to contort with the instruments to get packing thrust.

Additionally, the patient does not have to open as wide. The angulation does not have to be exaggerated to pack correctly. The finger rest aids in giving better amalgam packing forces.

### Bredall - Serrated



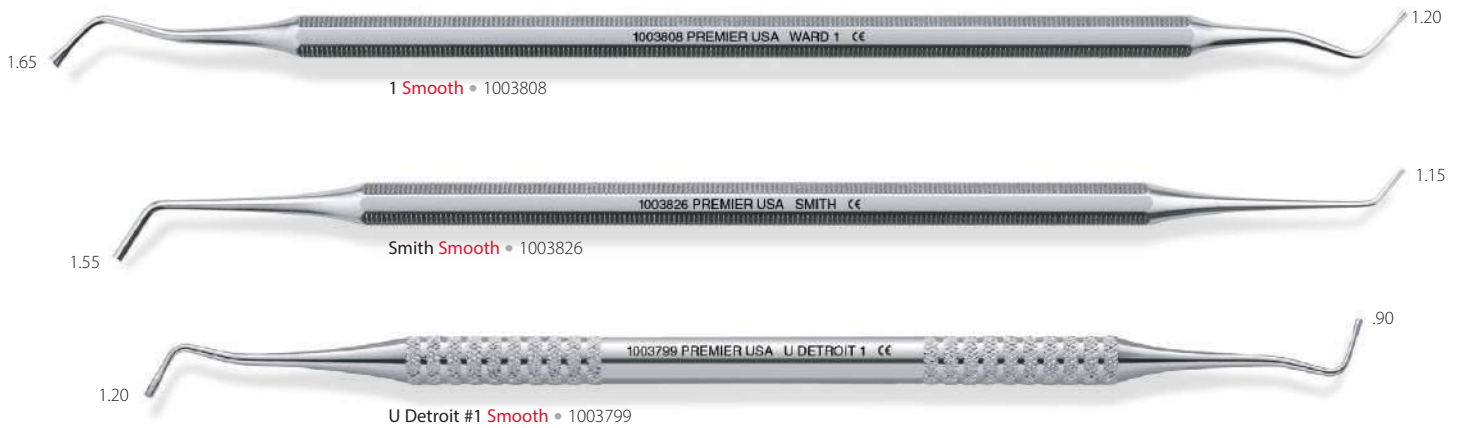
## Pluggers/Condensers

| Stopfer/Kondensierer | Obturadores/Condensadores | Fouloirs à amalgame |

### Hollenback



### Ward





**Acorn**



21 • 1003050



21B • 1003051



21C • 1003090



CMI 21B • 1003097

*For more CMI Instruments, see pages 32 and 41.*

**Cleoid/Discoïd**



Large • 1003045



3/6 • 1003046



5C • 1003047



6C • 1003048



Black 89/92 • 1003240

**Cleoid/Discoïd - Tanner**



3T • 1003062



5T • 1003064

## Carvers | Modelliermesser | Talladores | Sculpteurs |

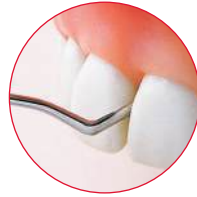
### Hollenback



### Ward



## *technique tip*



### IPC Carver

Thin, flexible blades allow for easy placement and shaping. Dip in bonding agent to avoid composite sticking.

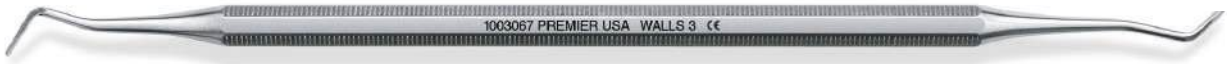
### Interproximal



| Modelliermesser | Talladores | Sculpteurs | **Carvers**



Walls 1 • 1003066



Walls 3 • 1003067



Shooshan A • 1003061



Caulk 5/7 • 1003054

| Polierer | Bruñidores | Brunissoirs | **Burnishers**



25/26 (PFI 13A) • 1003694



27/27S (PFI S Ball) • 1003696



26/27S • 1003027



27/29 • 1003028



28/29 • 1003029



29/34 • 1003031

**Composite/Plastic Filling Instruments** | Instrumente für Komposit- und Kunststofffüllungen |  
| Instrumentos de obturación para composite y materiales plásticos |  
| Instruments pour plombages plastiques/composites |



11 • 1003692



13 • 1003693



13A (Burnisher 25/26) • 1003694



S Ball (Burnisher 27/27S) • 1003696



IPP A • 1003697



156 • 1003737



D2 • 1003704



D3 • 1003705



Gregg 2/3 • 1003706



Gregg 4/5 • 1003707

| Instrumente für Komposit- und Kunststofffüllungen | **Composite/Plastic Filling Instruments**  
| Instrumentos de obturación para composite y materiales plásticos |  
| Instruments pour plombages plastiques/compo



**Ladmore**



3 • 1003710



S4 • 1003718



S6 • 1003720



W1 • 1003721



W3 • 1003723

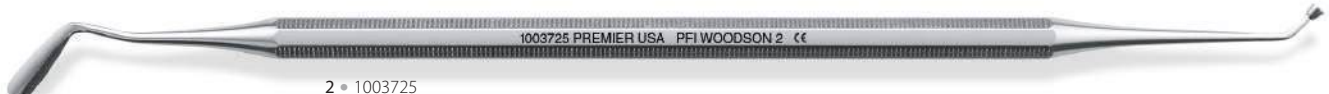


1003723 PREMIER USA PFI W3 CE

**Woodson**



1 • 1003724



2 • 1003725



TB Trico 1/2 • 1003736

**Composite/Plastic Filling Instruments** | Instrumente für Komposit- und Kunststofffüllungen |  
| Instrumentos de obturación para composite y materiales plásticos |  
| Instruments pour plombages plastiques/composites |



**Slix™ Composite Manipulation Instruments**

Nonstick - Durable - Ergonomic - Autoclavable

The tips are treated with a revolutionary protective coating that provides superior non-stick properties and a lustrous surface for long lasting esthetic appearance. No more composite sticking; dentists appreciate the easy placement and fast clean-up! The ergonomic handles are manufactured from an advance technology polymer with medical-grade silicone grips. "Surprisingly light"-only 16g - on the largest available handle (1/2" (1.27 cm diameter) to reduce hand fatigue.



11 • 05700



13 • 05701



IPC • 05702



Ladmore 3 • 05703



Woodson 2 • 05704



W3 • 05705

| Instrumente für Komposit- und Kunststofffüllungen | **Composite/Plastic Filling Instruments**  
| Instrumentos de obturación para composite y materiales plásticos |  
| Instruments pour plombages plastiques/compo



Mini IPC • 05708



Mini 11 • 05706



Mini W3 • 05709



21B Acorn • 05707



Mini S1 • 05710

**Composite Instruments** | Kompositinstrumente | Instrumentos para composite | Instruments pour composites

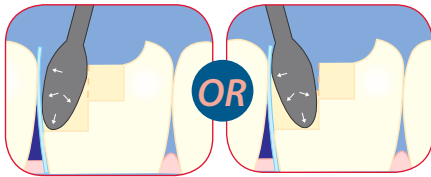


**CCI and CMI** Anodized aluminum on CMI and CCI instruments provides even greater lubricity to virtually eliminate composite sticking. The black coating does not abrade to discolor the restoration.

**Composite Contact (CCI)**

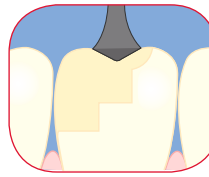


**CCI technique**



After placing composite into box, insert instrument tip into the composite, torque into position and apply gentle pressure to adjacent tooth for desired positive contact. Light-cure composite, making sure composite is not overfilled to lock in instrument. As recommended by Dr. Brian Wilk.

**CMI technique**



Acorn Carver (21B) is helpful in establishing anatomical contours, prior to carving.

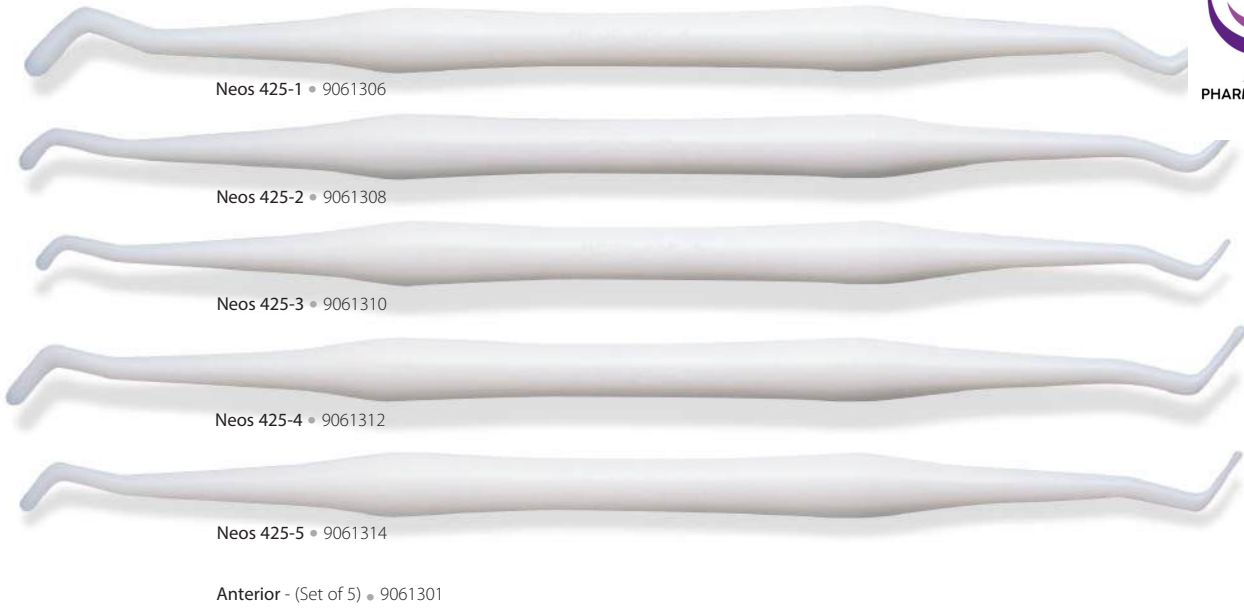
**Composite Manipulation (CMI)\***



**Cleaning/Sterilizing Tips**

- Do not mix unlike metals in the same bag.
- Simply wipe off CMIs - do not expose to solutions with pH above 8 or containing iodophors.

| Kompositinstrumente | Instrumentos para composite | **Composite Instruments** | Instruments pour composite



Neos 425-1 • 9061306

Neos 425-2 • 9061308

Neos 425-3 • 9061310

Neos 425-4 • 9061312

Neos 425-5 • 9061314

Anterior - (Set of 5) • 9061301

| Kronenringabnehmer | Removedores de coronas | Arrache-couronnes | **Crown Removers**

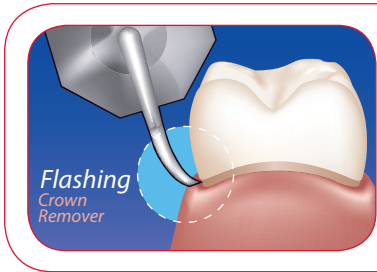


1 • 1003152



Morrell Crown Remover Set • 1003151  
(Hammer, Handle, Points 1 & 2)

Handle w/ cap • 1003159



**Flashing Crown Remover**

Ideal for removing provisionally cemented crowns without damaging margins and is less traumatic to the patient.



3 • 1003154



4 • 1003155



5 • 1003156 (suggested by Dr. T. Balshi)



Flashing Crown Remover • 1003576

As recommended by Dr. Donald Flashing



Articulating Paper Forcep • 9065130

**Spatulas** | Spatel | Espátulas | Spatules |



Placement - Mini Spatula • 1004381



22 • 1004366



24A • 1004368



24 • 1004367



36 • 1004369



CMI 24 • 1004365

*For additional CMI instruments, see pages 32, 34, and 41.*

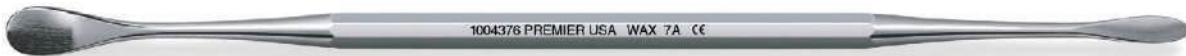


313 • 1004370

**Wax Spatulas**



7 • 1004375



7A • 1004376



7L • 1004377



31 • 1004379

## Laboratory Instruments

| Laborinstrumente | Instrumentos de laboratorio | Instruments pour laboratoire |



### Wax Instruments - PK Thomas



1 • 1004383



1 • 1004382



2 • 1004384



3 • 1004385



5 • 1004387

### Carvers



Roach • 1003086



Vehe • 1003087

# Endodontic

| Wurzelbehandlung | Endodoncia | Endodontiques |

---

## Excavators

Page 46

| Exkavatoren | Excavadores | Excavateurs |

---

## Explorers

46

| Sonden | Exploradores | Sondes exploratrices dentaires |

---

## Specialty

46-47

| Spezialinstrumente | Especialidad | Spécialité |

---

## Spreaders

48-49

| Spreizinstrumente | Espaciadores | Fouloirs à canaux radiculaires |

---

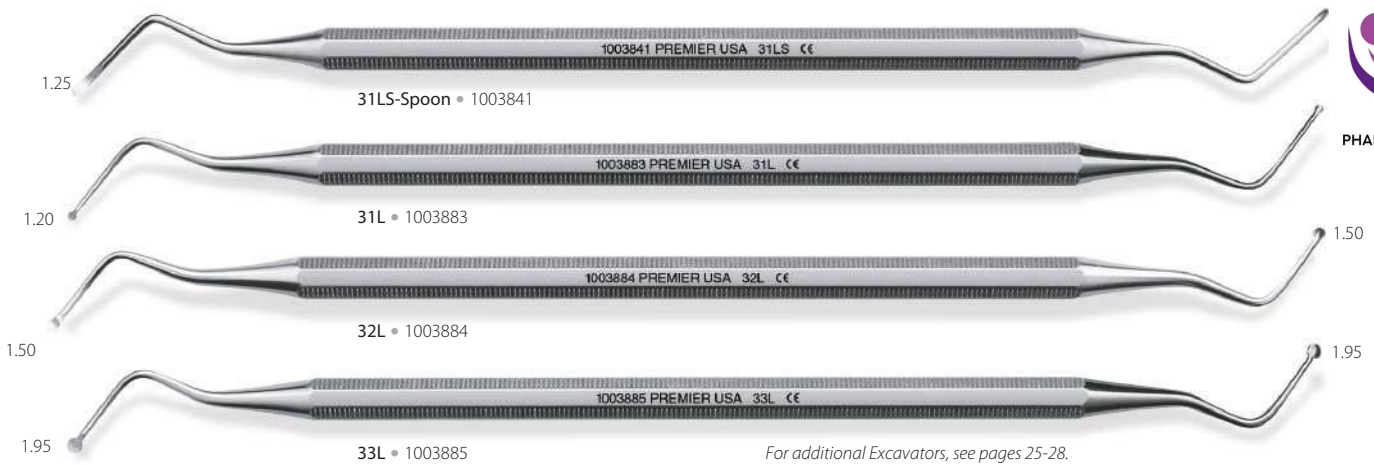
## Pluggers

50

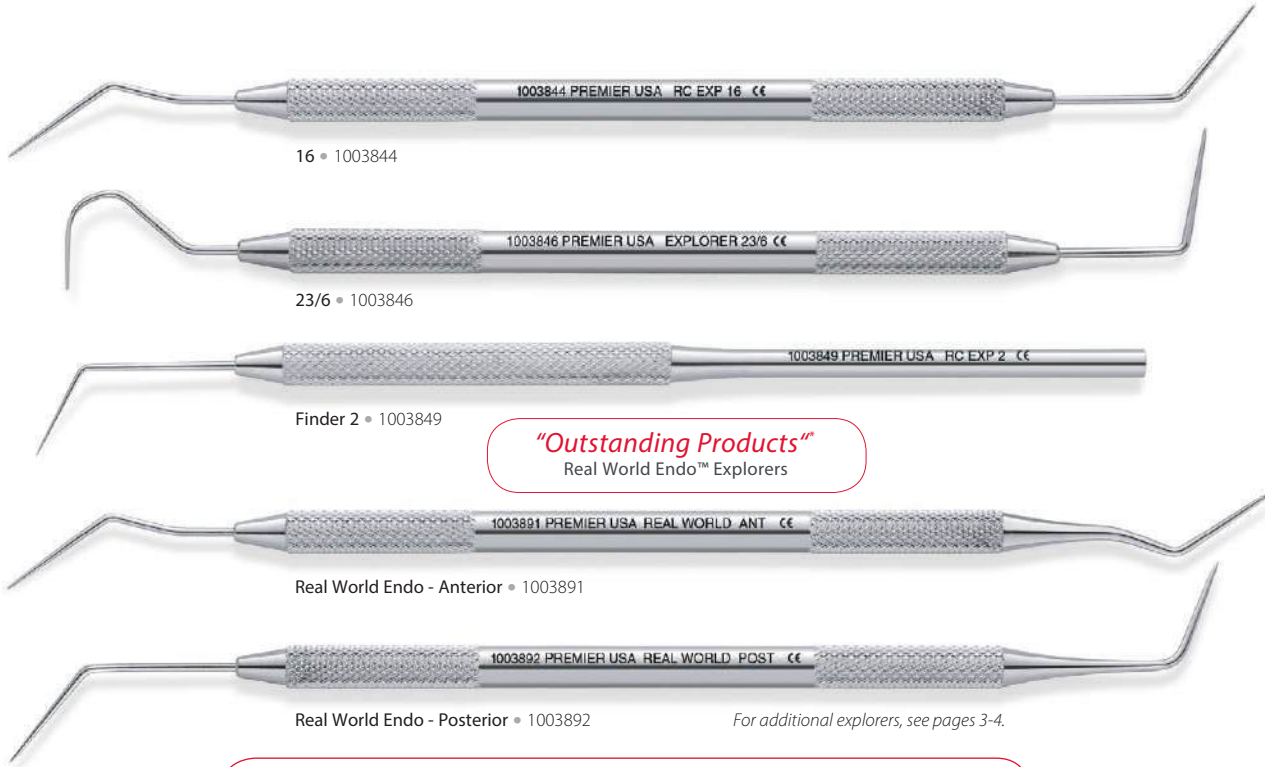
| Wurzelkanalstopfer | Obturadores | Fouloirs |

---

| Exkavatoren | Excavadores | Excavateurs | **Excavators**



| Sonden | Exploradores | Sondes exploratrices dentaires | **Explorers**



*"Outstanding Products"*  
Real World Endo™ Explorers

**technique tip** Real World Explorers have both a delicate tip to locate the canal and a rigid tip to gain access.

| Spezialinstrumente | Especialidad | Spécialité | **Specialty**



**technique tip** The Stewart Multi-Purpose Probe has rigid tips to easily locate canal openings.

**Specialty** | Spezialinstrumente | Especialidad | Spécialité |



Glick 1 • 1003850



Glick 2 • 1003842



Endodontic Plier • 9065086

*For additional pliers, see pages 8-9.*



Locking (Grooved) 6" (15.0 cm) • 9065088



Rubber Dam Clamp Forceps • 9065131



Rubber Dam Punch • 9065132

| Spreizinstrumente | Espaciadores | Fouloirs à canaux radiculaires | **Spreaders**

**Nickel Titanium**



The physical properties of Ni-Ti allow these spreaders to negotiate even the most curved canals without being distorted. These instruments have extra flexibility and “memory.”

*“Outstanding Products”*  
Premier® Ni-Ti Spreaders

| Spreader Point Size (mm) |      |      |      |
|--------------------------|------|------|------|
| Size                     | D1   | D16  | AAE  |
| 25, 25S                  | 0.25 | 0.55 | 0.25 |
| 40                       | 0.40 | 0.70 | 0.40 |
| D11                      | 0.30 | 0.75 |      |
| D11T                     | 0.23 | 0.55 |      |

**Stainless Steel**



\* An independent non-profit dental education and product testing foundation, December 2004.

**Spreaders** | Spreizinstrumente | Espaciadores | Fouloirs à Canaux Radiculaires |



| Spreader Point Size (mm) |      |      |      |
|--------------------------|------|------|------|
| Size                     | D1   | D16  | AAE  |
| 40S                      | 0.40 | 0.70 | 0.40 |
| W1S, W1                  | 0.25 | 0.55 | 0.25 |

| Wurzelkanalstopfer | Obturadores | Foulours | **Pluggers**



RC 1/3 • 1003862

RC 5/7 • 1003863

RC 9/11 • 1003864

RC NC 1/3 • 1003880

RC NC 5/7 • 1003881

RC NC 9/11 • 1003882

*NC 1/3, NC 5/7 and NC 9/11 have 5,10,15 mm markings, as suggested by Dr. Noah Chivian.*

RC 7S • 1003852

(5-10-15)

| Root Canal Plugger Size (mm) |      |      |
|------------------------------|------|------|
| Size                         | D1   | D16  |
| 7S                           | 0.50 | 0.80 |

# Perio/Oral Surgery

| Parodontal-/Kieferchirurgie | Periodoncia/Cirugía oral | Chirurgie parodontale et buccale |

|  |            |
|--|------------|
| <b>Scissors</b>  | Page 52-56 |
| Scheren   Tijeras   Ciseaux  |            |
| <b>Hemostats</b>   | 57         |
| Arterienklemmen   Pinzas hemostáticas   Pincas hémostatiques                   |            |
| <b>Needle Holders</b>  | 58-60      |
| Nadelhalter   Portaagujas   Porte-aiguilles                                    |            |
| <b>Tissue Pliers</b>   | 61         |
| Chirurgische Pinzetten   Pinzas de disección   Pince à tissu                   |            |
| <b>Spreaders/Retractors</b>  | 62         |
| Spreizinstrumente/Wundhaken   Abrebocas/Retradores   Ouvre-bouches/écarteurs   |            |
| <b>Knives</b>  | 63         |
| Messer   Cuchillos   Bistouris dentaires                                       |            |
| <b>Periotomes</b>  | 63         |
| Periotome   Periotomos   Périotomes  |            |
| <b>Elevators - Periosteals</b>   | 64         |
| Heber-Raspatorien für Parodontologie   Periostótomos   Rugines raspatoires     |            |
| <b>Surgical Curettes</b>   | 64-65      |
| Chirurgische Küretten   Curetas quirúrgicas   Curettes chirurgicales           |            |
| <b>Files</b>   | 65         |
| Feilen   Limas   Limes   |            |
| <b>Mallets</b>   | 65         |
| Hammer   Martillo quirúrgico   Maillets  |            |
| <b>Biopsy Punch</b>  | 66         |
| Hautstanze   Biopsia de piel   Poinçon à biopsie                               |            |
| <b>Rongeurs</b>  | 67         |
| Hohlmeißelzangen   Pinzas gubia   Pincas-gouges                                |            |
| <b>Aspirators</b>  | 67         |
| Aspirationskanülen   Aspiradores   Aspirateurs                                 |            |
| <b>Elevators</b>   | 68-72      |
| Wurzelheber   Elevadores   Élévateurs  |            |
| <b>Forceps</b>   | 73-80      |
| Zangen   Fórceps   Daviers   |            |
| <b>Cassettes and Instrument Care</b>   | 81-82      |
| Pflege der Kassetten & Instrumente   Cassettes y mantenimiento de instrumentos |            |
| Cassettes et soin des instruments  |            |

**Tissue**



Gum 1 Straight • 9065106



Gum 2 Curved • 9065107



Quimby Curved • 9065109



Scissors | Scheren | Tijeras | Ciseaux |

Tissue



Goldman Fox • 9065105  
*Serrated on one blade.*



Dean • 9065110



La Grange • 9065115

**Tissue**



Iris - Curved/Delicate 4½" (11.4cm) • 9085204



Iris - Straight/Delicate 4½" (11.4cm) • 9085200



Mayo - Straight/Blunt 5½" (14.0cm) • 9085218



Scissors | Scheren | Tijeras | Ciseaux |

Suture



Littauer 4 1/2" (11.4cm) • 9085114



Littauer 5 1/2" (14.0cm) • 9085116



Spencer 3 1/2" (8.9cm) • 9085118

**Crown and Collar**



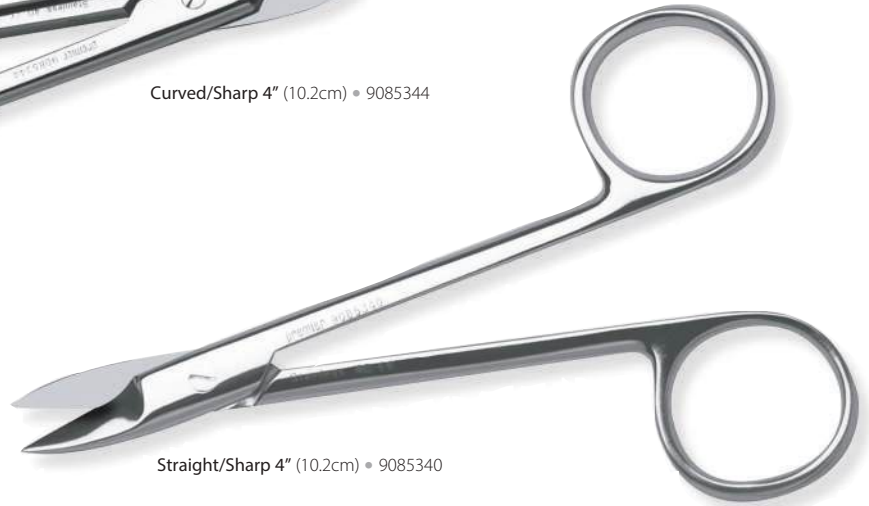
Curved/Sharp 5" (12.7cm) • 9085346



Curved/Sharp 4" (10.2cm) • 9085344



Straight/Sharp 4" (10.2cm) • 9085340



**Hemostats** | Arterienklemmen | Pinzas hemostáticas | Pinces hémostatiques |



5 1/2" Curved (14.0cm) • 9065129



5 1/2" Straight (14.0cm) • 9065128

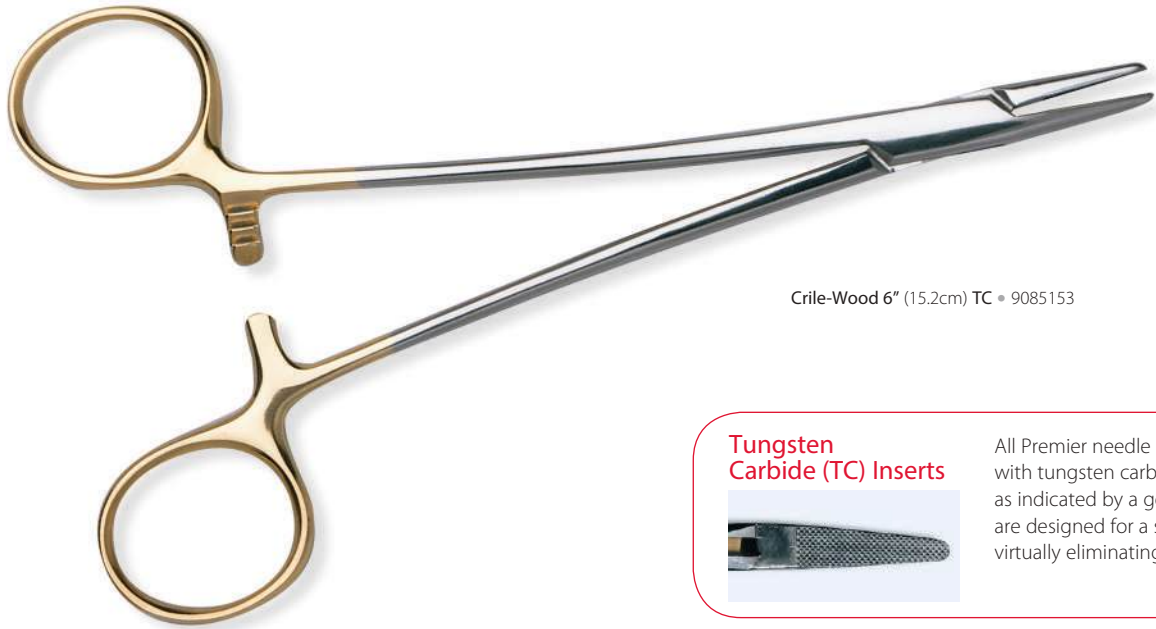


4 3/4" Straight (12.1cm) • 9065126



4 3/4" Curved (12.1cm) • 9065127

| Nadelhalter | Portaaguja | Porte-aiguilles | **Needle Holders**



Crile-Wood 6" (15.2cm) TC • 9085153

**Tungsten Carbide (TC) Inserts**



All Premier needle holders with tungsten carbide inserts, as indicated by a gold handle, are designed for a superior grip, virtually eliminating slipping.



Crile-Wood 6" (15.2cm) • 9085163



Castroviejo TC • 9085159

**Needle Holders** | Nadelhalter | Portaagujas | Porte-aiguilles |



Mayo-Hegar 6 1/4" (15.9cm) TC • 9085151



**Tungsten Carbide (TC) Inserts**



All Premier needle holders with tungsten carbide inserts, as indicated by a gold handle, are designed for a superior grip, virtually eliminating slipping.



Mayo-Hegar 6 1/4" (15.9cm) • 9085162

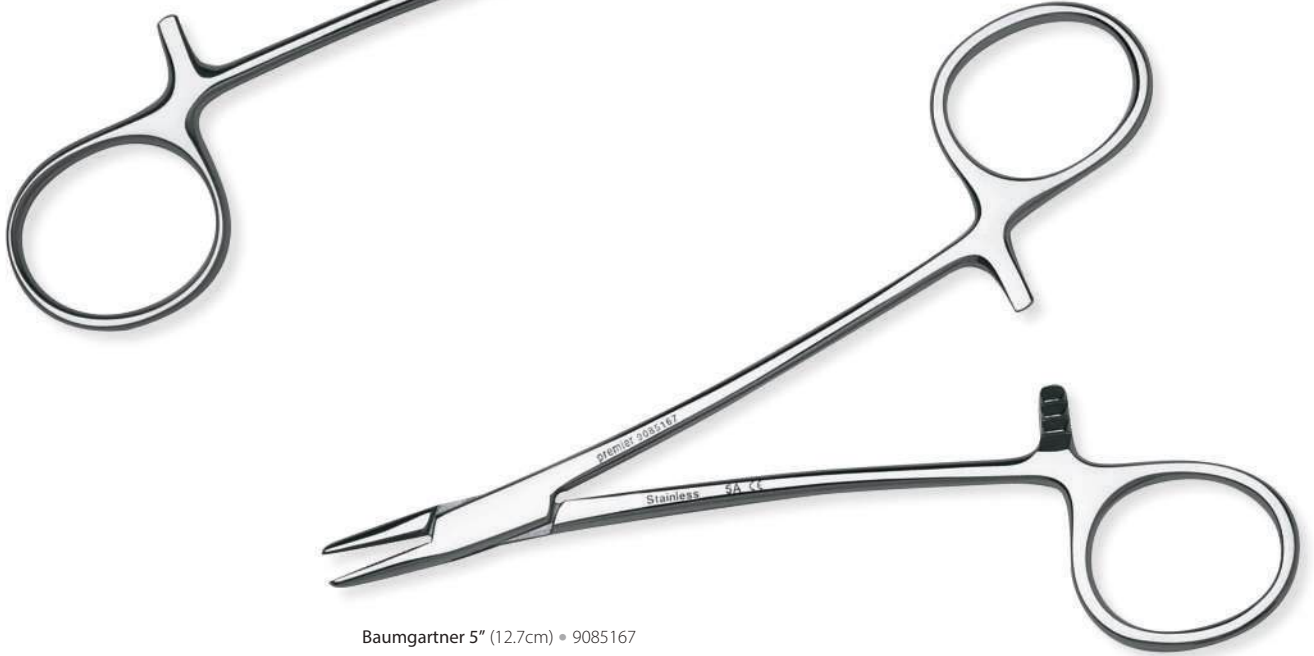


Mayo-Hegar 5 1/2" (14.0cm) • 9085161

| Nadelhalter | Portaaguja | Porte-aiguilles | **Needle Holders**



Derf 5" (12.7cm) • 9085165



Baumgartner 5" (12.7cm) • 9085167

**Tissue Pliers** | Chirurgische Pinzetten | Pinzas de disección | Pince à tissu |



**Tissue**



5 1/2" 1x2 (14.0 cm) • 9085283

**Iris**



Dressing - Straight 4" (9.8 cm) • 9085300



Dressing - Curved 4" (9.8 cm) • 9085301



Tissue 1x2 - Curved 4" (9.8 cm) • 9085304

**Adson**



Tissue 1x2 4 3/4" (12.1 cm) • 9085296



Brown Tissue 4 3/4" (11.8 cm) • 9085299

| Spreizinstrumente/Wundhaken | Abre bocas/Retradores | **Spreaders/Retractors** | Ouvre-bouches/écart



Columbia Cheek Retractor • 1003837



Univ. of Minnesota Retractor • 1033120



Spreader-Small • 9085430 Large • 9085431

**ComfortView® Lip & Cheek Retractor**



- Retracts lips and cheeks for optimal buccal and gingival access
- Maximum visibility and patient comfort
- Suitable for use in diagnostic, preventative, therapeutic dental applications and digital impression scanning
- Autoclavable, Latex free

- 9061381 Universal ComfortView Lip and Cheek Retractor - 2 per box (white)
- 9061383 Small ComfortView Lip and Cheek Retractor - 2 per box (blue)
- 9061382 ComfortView Refill Cushions -10 per pack

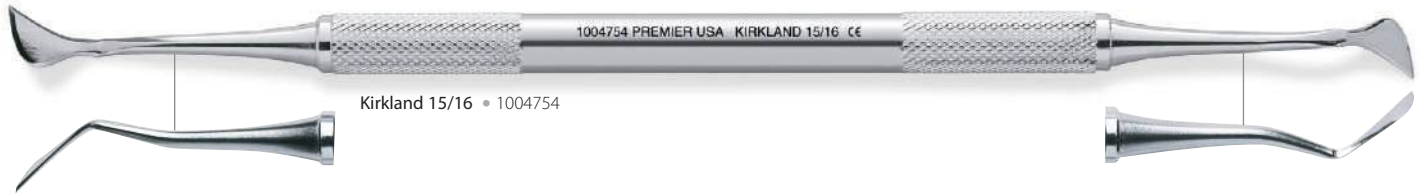
ComfortView not available from Premier in Europe.

**"Outstanding Products"**  
ComfortView® Lip & Cheek Retractor

**Knives** | Messer | Cuchillos | Bistouris dentaires |



Orban 1/2 • 1004751



Kirkland 15/16 • 1004754

**Periotomes** | Periotome | Periotomos | Périotomes |

*"Outstanding Products"*  
Premier® Periotomes



Anterior • 1003659



Posterior • 1003660



Anterior • 1003652



Posterior • 1003653

| Heber-Raspatorien für Parodontologie | Periostótomos | Rugines raspatoires | **Elevators**

**Periosteals**



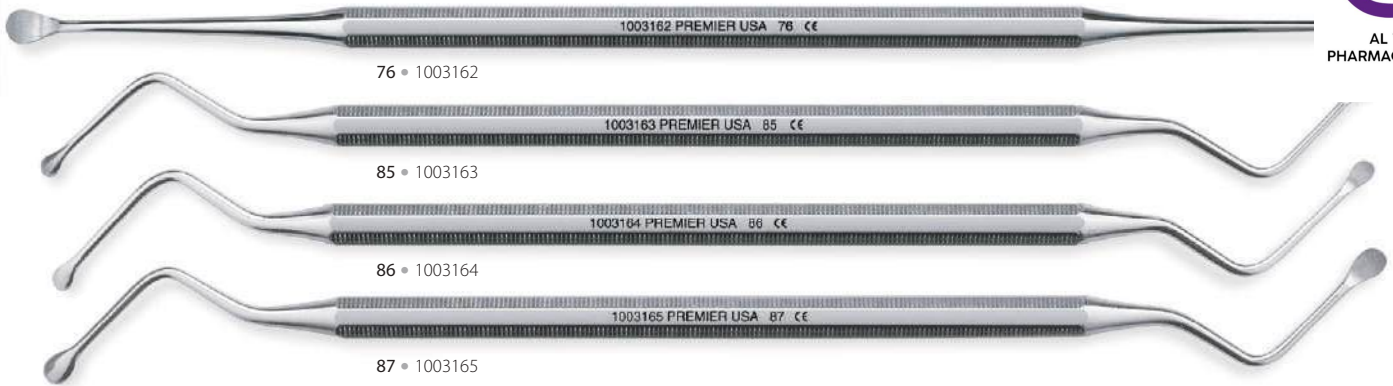
| Chirugische Küretten | Curetas quirúrgicas | Curettes chirurgicales | **Surgical Curettes**

**Molt**



## Surgical Curettes | Chirugische Küretten | Curetas quirúrgicas | Curettes chirurgicales |

### Lucas Alveolar



## Files | Feilen | Limas | Limes |

### Bone



## Mallets | Hammer | Martillo quirúrgico | Maillets |

### Mallets



| Hautstanze | Biopsia de piel | Poinçon à biopsie | **Biopsy Punch**



**Uni-Punch®**

Seamless Disposable Biopsy Punch

- **Seamless Blade**  
Sharpened on both inside and outside
- **Ergonomic Handle Design**  
Lightweight, stiff plastic material, ribbed handle for improved control
- **Sterile Product**  
Ethylene oxide sterilization (ETO)
- **Mylar and Tyvek Sterile Peel-Pouch**  
Individually wrapped
- **Capped Tip for Added Safety**  
During handling and disposal
- **Packaging Convenience**  
Boxes of 25 and 50, Assorted package



(Assorted - 5 each: 2mm, 3mm, 3.5mm, 4mm, 5mm)



Nine Different Sizes!  
The largest number available!

1.5mm



2mm



2.5mm



3mm



3.5mm



4mm



5mm



6mm



8mm



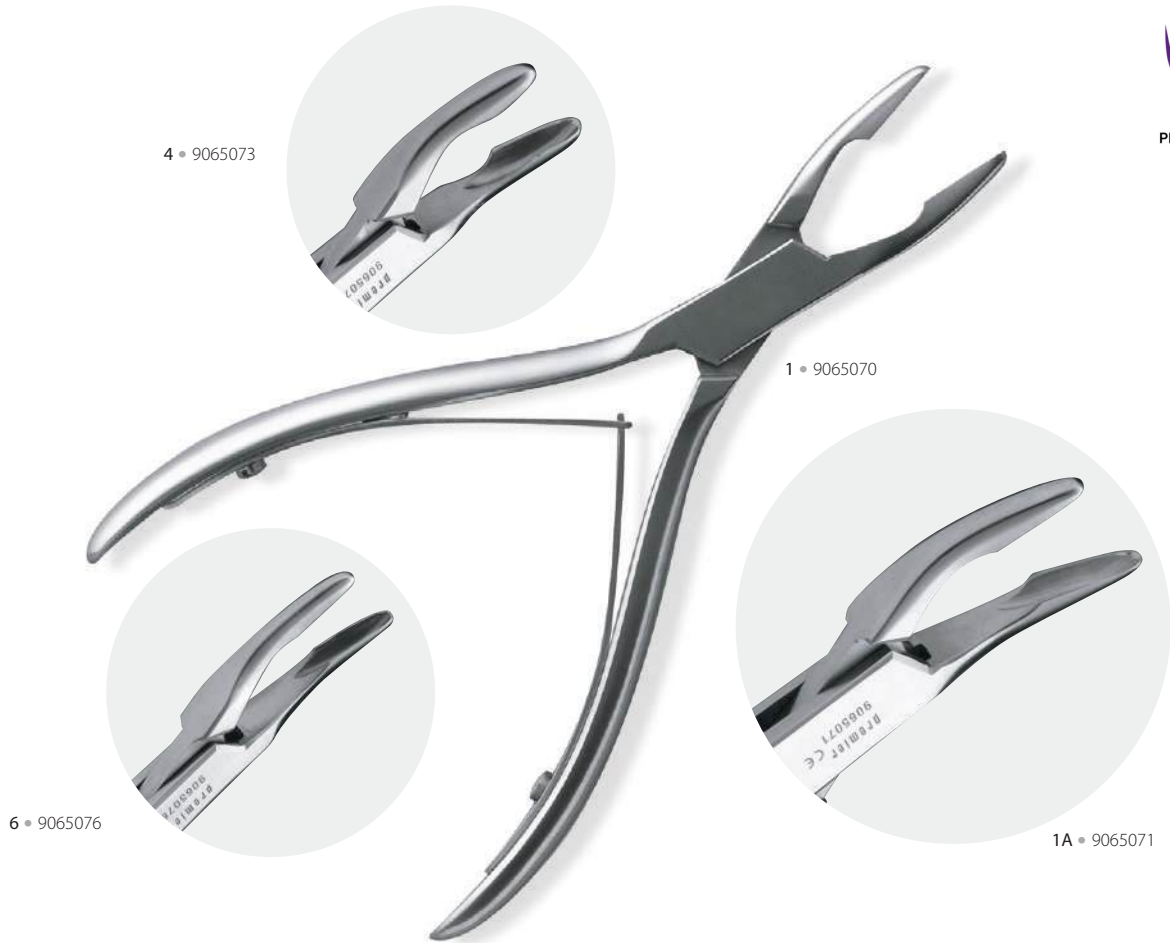
**Box of 25**

| Size (in mm) | Item #  |
|--------------|---------|
| 1.5          | 9033509 |
| 2            | 9033502 |
| 2.5          | 9033511 |
| 3            | 9033503 |
| 3.5          | 9033510 |
| 4            | 9033504 |
| 5            | 9033505 |
| 6            | 9033506 |
| 8            | 9033508 |
| Asst.        | 9033525 |

**Box of 50**

| Size (in mm) | Item #  |
|--------------|---------|
| 2            | 9033512 |
| 2.5          | 9033521 |
| 3            | 9033513 |
| 3.5          | 9033520 |
| 4            | 9033514 |
| 5            | 9033515 |
| 6            | 9033516 |
| 8            | 9033518 |

**Rongeurs** | Hohlmeißelzangen | Pinzas gubia | Pincés-gouges |



**Aspirators** | Aspirationskanülen | Aspiradores | Aspirateurs |



| Frazier Suction Tubes |         |          |
|-----------------------|---------|----------|
| Item No.              | Size    |          |
| 1031208               | Size 8  | 2.67mm ● |
| 1031209               | Size 9  | 3.00mm ● |
| 1031210               | Size 10 | 3.33mm ● |
| 1031211               | Size 11 | 3.67mm ● |
| 1031212               | Size 12 | 4.00mm ● |

Frazier Suction Tube (with stylet)

| Wurzelheber | Elevadores | Élévateurs | **Elevators**

**Crane** – Large Handle



**Luxating** – Large Handle



**Apical (Blunt)** – Large Handle



**Elevators** | Wurzelheber | Elevadores | Élévateurs |

**Apical (Pointed) – Large Handle**



2 • 1003358

1 • 1003357

Periosteals can be found on page 62.

**Root – Large Handle**



Cameron • 1003371

34 (12) • 1003372

34S (13) • 1003373

**Seldin – Large Handle**



1R • 1003365

1L • 1003364

4R • 1003369

4L • 1003368

| Wurzelheber | Elevadores | Élévateurs | **Elevators**



**Coupland** – Medium Handle



1 • 1003397



2 • 1003398

**Cryer** – Medium Handle



31 • 1003401



30 • 1003400

**Cryer** – Large Handle



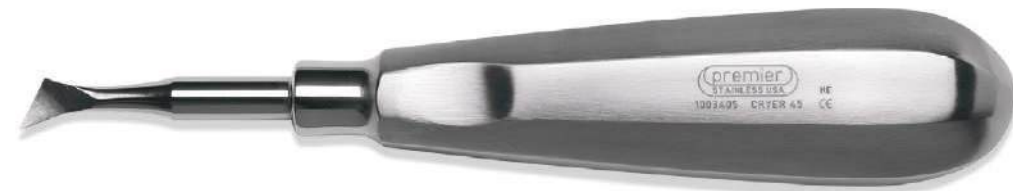
40 • 1003377



39 • 1003376



Cryer 44 (Left) • 1003404



Cryer 45 (Right) • 1003405

**Elevators** | Wurzelheber | Elevadores | Élévateurs |

**Apical Picks – Medium Handle**



301 P • 1003387



303 P • 1003389



302 P • 1003388



78 S • 1003352



78 • 1003384



80 S • 1003354



80 • 1003386



79 S • 1003353



79 • 1003385

**78S, 79S and 80S Extra-Fine Apical Root Tip Picks/Elevators**

These extra-slender tips can gently slide between the residual tip and the alveolar socket wall. With a back-and-forth motion, the tips are worked into position; a careful lateral movement then will engage the tip. With an occlusal-ward action, the root tip can often be released from its apical position in the socket. The set of three Root Tip Picks provides angulations to enable the dentist to reach all areas of the mouth.

**Apical Picks – Light Touch Handle**



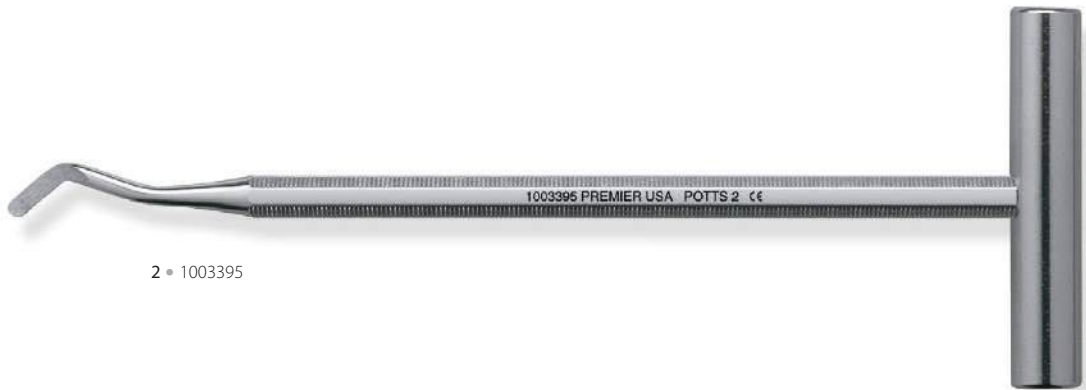
Heidbrink 13-14 • 1003396

| Wurzelheber | Elevadores | Élévateurs | **Elevators**

**Potts**



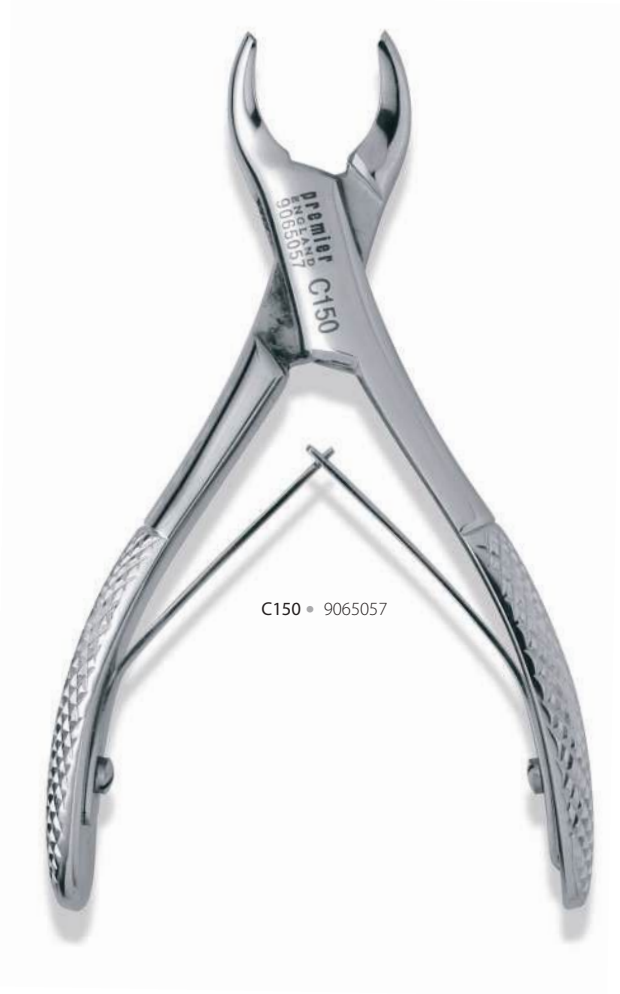
1 • 1003394



2 • 1003395

**Forceps** | Zangen | Fórceps | Daviers |

**Child Size - Maxillary**



C150 • 9065057



C150 • 9065057



C4 • 9065054

**PREMIER MAXILLARY CHILD FORCEPS SELECTION CHART**

|              |    |      |
|--------------|----|------|
| Centrals     |    | C150 |
| Laterals     | C4 | C150 |
| Cuspids      |    | C150 |
| Bicuspids    |    | C150 |
| First Molar  |    | C150 |
| Second Molar |    | C150 |
| Third Molar  |    | C150 |
| Root         |    | C150 |

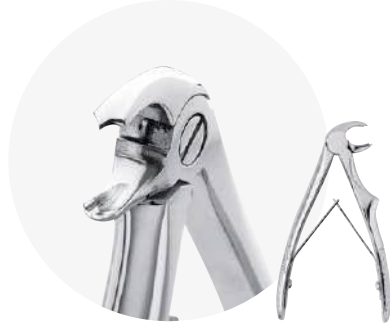
Child size forceps are approximately 65% the size of adult forceps and can be easily concealed from the patient.

150                      C150

**Child Size - Mandibular**



C1 • 9065051



C2 • 9065052



C3 • 9065053



C151 • 9065058



**PREMIER MANDIBULAR CHILD  
FORCEPS SELECTION CHART**

|              |    |      |
|--------------|----|------|
| Centrals     |    | C151 |
| Laterals     | C1 | C151 |
| Cuspids      |    | C151 |
| Bicuspid     |    | C151 |
| First Molar  | C2 | C151 |
| Second Molar | C2 | C151 |
| Third Molar  |    | C151 |
| Root         | C3 | C151 |

**Forceps** | Zangen | Fórceps | Daviers |



**Maxillary**



150 • 9065030



150 • 9065030  
• 9065078 (serrated)



150A • 9065032



150S • 9065034

**PREMIER MAXILLARY FORCEPS SELECTION CHART**

|             |      |      |      |     |     |     |     |  |  |  |
|-------------|------|------|------|-----|-----|-----|-----|--|--|--|
| Incisors    | 150  | 150A | 150S | 99C |     | 65  |     |  |  |  |
| Canines     | 150  | 150A | 150S |     | 99C |     |     |  |  |  |
| Premolars   | 150  | 150A | 150S |     | 99C |     | 101 |  |  |  |
| 1st Molar   | 150S | 88L  | 88R  | 53L | 53R | 18L | 18R |  |  |  |
| 2nd Molar   | 150S | 88L  | 88R  | 53L | 53R | 18L | 18R |  |  |  |
| 3rd Molar   |      |      |      | 210 |     |     |     |  |  |  |
| Roots       | 150  | 150S | 65   | 69  | URG | 76S |     |  |  |  |
| Periodontic | 150S |      |      |     |     |     |     |  |  |  |

**Maxillary**



88L • 9065024



88R • 9065025



53L • 9065015



53R • 9065016



18L • 9065009



18R • 9065010



18R • 9065010

**Forceps** | Zangen | Fórceps | Daviers |

**Maxillary**



99C • 9065027



101 • 9065028



210 • 9065037



65 • 9065018

**PREMIER MAXILLARY FORCEPS SELECTION CHART**

|             |      |      |      |     |     |     |     |  |  |  |
|-------------|------|------|------|-----|-----|-----|-----|--|--|--|
| Incisors    | 150  | 150A | 150S | 99C |     | 65  |     |  |  |  |
| Canines     | 150  | 150A | 150S |     | 99C |     |     |  |  |  |
| Premolars   | 150  | 150A | 150S |     | 99C |     | 101 |  |  |  |
| 1st Molar   | 150S | 88L  | 88R  | 53L | 53R | 18L | 18R |  |  |  |
| 2nd Molar   | 150S | 88L  | 88R  | 53L | 53R | 18L | 18R |  |  |  |
| 3rd Molar   |      |      | 210  |     |     |     |     |  |  |  |
| Roots       | 150  | 150S | 65   | 69  | URG | 76S |     |  |  |  |
| Periodontic | 150S |      |      |     |     |     |     |  |  |  |

**Mandibular**



151 • 9065031  
• 9065077 (serrated)



151S • 9065035



151A • 9065033



23 • 9065011  
• 9065079 (serrated)

**PREMIER MANDIBULAR FORCEPS SELECTION CHART**

|            |      |      |      |    |     |         |
|------------|------|------|------|----|-----|---------|
| Incisors   | 151  | 151S | 151A | 74 | MD3 |         |
| Canines    | 151  | 151S | 151A | 74 | MD3 |         |
| Premolars  | 151  | 151S | 151A | 74 | MD3 |         |
| 1st Molars | 151S | 23   |      | 17 |     | MD4     |
| 2nd Molars | 151S | 23   |      | 17 |     | MD4     |
| 3rd Molars |      | 222  | MD4  |    |     |         |
| Roots      | 151  | 151S | 151A | 74 | 69  | LRG MD3 |
| Pedodontic | 151S |      |      |    |     |         |

**Forceps** | Zangen | Fórceps | Daviers |

**Mandibular**



17 • 9065008



222 • 9065039



Mead 4 • 9065064



74 • 9065021



74 • 9065021

Root



69 • 9065019



69 • 9065019



Upper Root Grip • 9065043



Lower Root Grip • 9065044



76S • 9065045



Mead 3 • 9065063

## Cassettes and Instrument Care

| Pflege der Kassetten & Instrumente | Cassettes y mantenimiento de instrumentos |  
| Cassettes et soin des instruments |



### Instrument Cassettes

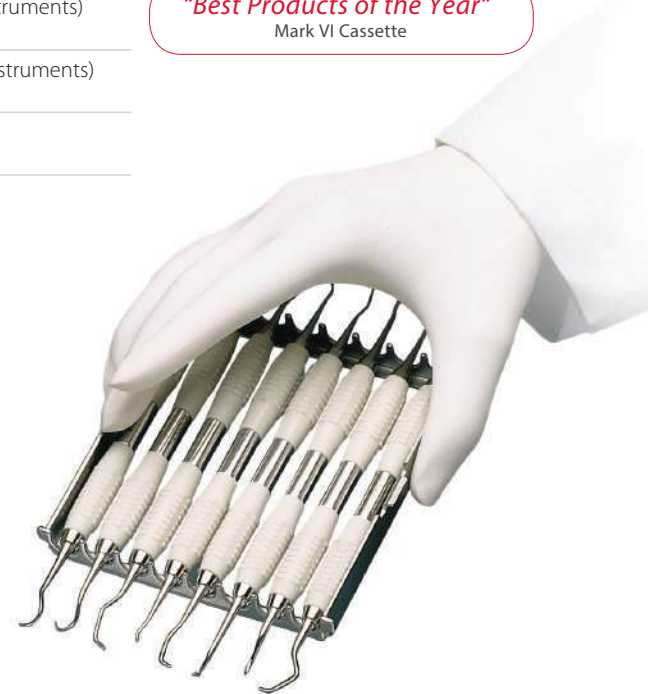
Premier stainless-steel instrument cassettes offer proven reliability and quality performance with an unparalleled satisfaction guarantee.

Unique, hingeless design offers years of trouble-free operation. Compact, double-stack feature accommodates more instruments for greater efficiency in ultrasonic cleaning, autoclaving and storing. Apertures in side walls, lid and bottom of trays permit optimum flow of cleaning solution, ultrasonic energy and greater access for rinsing.

Includes a five-year satisfaction guarantee.

|         |  |
|---------|--|
| 9010904 | Mark I (4 or 8 Instruments)<br>2.5" x 8.5" x 1.5"    |
| 9010908 | Mark VI (8 or 16 Instruments)<br>4.5" x 8.0" x 1.25" |
| 9010924 | Mark IV (12 or 24 Instruments)<br>8.0" x 11" x 1.50" |
| 9010901 | Accessory Cassette<br>1.5" x 3.5" x 1.0"             |

*"Best Products of the Year"*  
Mark VI Cassette



### Premier cassettes are easy to use!

- 1 Rinse cassette/bur block organizer under running water.
- 2 Place cassette/bur block organizer in ultrasonic unit; use Brite Shield™ to remove bio-burden and to clean & protect instruments.
- 3 Rinse cassette/bur block organizer under running water.
- 4 Allow instruments & cassette/bur block organizer to dry thoroughly.
- 5 Wrap cassettes and sterilize.



**Mark I (4 or 8 Instruments)**  
Ideal for prophy or exam setups



**Mark VI (8 or 16 Instruments)**  
Works for most operative procedures



**Mark IV (12 or 24 Instruments)**  
Accessory compartment for loose items



**Accessory Cassette**  
Holds either handpiece head or bur block

\* An independent non-profit dental education and product testing foundation, November - December 2007.

## Cassettes and Instrument Care

| Pflege der Kassetten & Instrumente | Cassettes y mantenimiento de instrumentos | Cassettes et soin des instrum



### Sterilization Troubleshooting

- **Don't sterilize dirty instruments.** They should always be cleaned before sterilization. Otherwise, the soil and dirt will become even harder to remove because the heat, hot water, or steam bakes the contaminant onto the instrument.
- **Don't use abrasives.** Steel wool or abrasive powders/soaps should not be used to scrub stainless-steel instruments. These abrasives may wear off the protective coating of the instruments. The finish protects the instrument from oxidation and corrosion.
- **Don't mix unlike metals.** Sterilizing different metals together can lead to a chemical reaction which can be detrimental to the instruments.
- **Don't use harsh detergents.** The pH of the detergent should be neutral (7pH). Highly alkaline (high pH) detergents may produce orange-brown stains. Highly acidic (low pH) detergents will cause black pitting marks that will permanently corrode and ruin the instrument.
- **Don't use chrome-plated instruments if the plating is starting to wear away.** Rust and corrosion will readily occur, spreading to other instruments.
- **Don't put instruments in a sterilizing unit that has a build-up of deposits in the sterilizing chamber.** Always remove scale and mineral deposits before sterilization. A mild abrasive or weak solution of acetic acid (vinegar) may be used to remove these deposits.
- **Don't use water with a high mineral content or water that is too soft.** Always use distilled water.
- **Don't exceed recommended temperatures.** Excessive heat in the sterilizing and drying procedures can be harmful to the metallurgy of the instruments and cause "rainbow-colored" stains.
- **Don't use vibrating marking devices to mark instruments.** Avoid the use of an "etching" device to personalize instruments. This can lead to rust/corrosion which can spread to other instruments.
- **Don't open the autoclave too soon.** The premature opening of the autoclave causes rapid condensation of steam on the hot instruments and will permit residue deposits.

### Sterilization vs. Disinfection

Sterilization is the act or process of complete destruction of all living microorganisms, while disinfection is the act or process of destroying most disease-causing microorganisms. The two are not interchangeable! Both the Center for Disease Control (CDC) and the American Dental Association (ADA) warn that all patients should be considered potentially infected and recommend that complete sterilization procedures are used whenever possible.

| Method  | Conditions  | Advantages   |
|---|---|--|
| Steam Autoclave - Designed for stainless steel, textiles, liquids, heat-resistant handpieces, tubing & plastics.                                      | 20 minutes at 250°F (121°C) (15 psi)<br>3-5 minutes at 273°F (134°C) (30 psi) | Time efficient, good penetration, water-based liquid                     |
| Liquid Sterilants - Designed for heat-sensitive materials.  | Up to 24 hours, using EPA registered solutions                                | Works on heat-sensitive items  |
| Dry Heat - Designed for stainless steel, some heat-resistant handpieces, tubings and plastics.  | 2 hours at 320°F (160°C)<br>1 hour at 340°F (171°C)                           | No corrosion, can use closed containers, large capacity, immediately dry |
| Unsaturated Chemical Vapors - Designed for high carbon metal and stainless steel, textiles, liquids, heat-resistant handpieces, tubings and plastics. | 30 minutes at 270°F (132°C) (20-40 psi)                                       | Time efficient, no corrosion, items dry quickly                          |

### Steps for Proper Sterilization via Autoclaving

1. Pre-soaking & cleaning
2. Corrosion control and lubrication for hinged instruments
3. Packaging
4. Sterilization
5. Sterilization monitoring
6. Drying and cooling
7. Storage



[premierdentalco.com/promise](http://premierdentalco.com/promise)

## We'll go the extra mile, every time.

We promise to:

- ✓ Make it easy to do business with us
- ✓ Provide innovative, standard-setting solutions
- ✓ Be your Product Concierge – for knowledge and service
- ✓ Make it right if we fall short

**premier®** Inspired solutions  
for daily dentistry®