

CALSET™

Composite Warmer



Image of the Calset Multi PRO



Image of the Calset Standard Tray



MultiPRO Tray



Syringe Tray



Standard Compu Tray



Dispenser Tray



Anesthetic Tray



Porcelain Veneer Tray



Restoration Tray



THE DENTAL ADVISOR
★★★★

CELLERANT
BEST OF CLASS
TECHNOLOGY AWARDS
2018

CALSET

The Calset unit is designed to heat composite material, anesthetic solution and porcelain veneers. The Calset unit accepts composite from compules or syringed material. A tray placed on the top of the heater will either hold compules, or will have a holder for your composite dispenser. Available in all worldwide voltage.

FEATURES

- Heats composite material to 98°F (37°C), 130°F (54°C), or 155°F (68°C)
- Maintains constant temperature
- Increases degree of cure
- Warms finishing instruments

BENEFITS

- Shortens curing time by over 80%
- Improves composite flow by 68%
- Reduces microleakage
- Decreases shrinkage stress
- Warms finishing instruments for improved marginal adaptation

There are more than 60 research studies done by leading universities worldwide on our website.

CALSET COMPOSITE WARMER COMBINATIONS

CALSET WITH MULTI PRO TRAY

- Warms a mix of composite dispensers and or syringe composite. Holds 4 compules, 2 finishing instruments.
- Includes heater base, tray and power supply

CALSET WITH 7 HOLE SYRINGE COMPOSITE TRAY

- Warms 4 small syringe, and 3 large syringe
- Includes heater base, 7 Hole syringe tray and power supply.

CALSET WITH DISPENSER TRAY

- Accepts composite dispenser and compules
- Includes heater base, power supply and dispenser tray with lid.

CALSET WITH STANDARD TRAY

- Warms 8 compules
- Includes heater base, power supply, standard tray and lid.

CALSET WITH RESTORATION TRAY

- Holds 6 Onlays or Inlays and 2 compules
- Includes heater base, power supply, restoration tray and lid.

CALSET WITH VENEER TRAY

- Warms 10 veneers
- Includes heater base, power supply, veneer tray and lid.

CALSET WITH ANESTHETIC TRAY

- Warms 3 carpules
- Includes heater base, power supply and anesthetic tray.

TRAY ACCESSORIES AVAILABLE

- Anesthetic Tray
- Veneer Tray
- Standard Tray
- Multi PRO Tray
- 7 Hole Syringe Tray
- Dispenser Tray
- Restoration Tray

Follow us on social media:     info@addent.com



AdDent
INCORPORATED

Advancing Dental
Excellence

ISO 9001 CERTIFIED & 13485 COMPLIANT | ALL PRODUCTS ARE FDA CLEARED



Made in the USA | www.addent.com

CoMax

COMPOSITE DISPENSER



ISO 9001 CERTIFIED & 13485 COMPLIANT | ALL PRODUCTS ARE FDA CLEARED

AdDent INCORPORATED | *Advancing Dental Excellence*
Made in the USA | www.addent.com

COMAX COMPOSITE DISPENSER

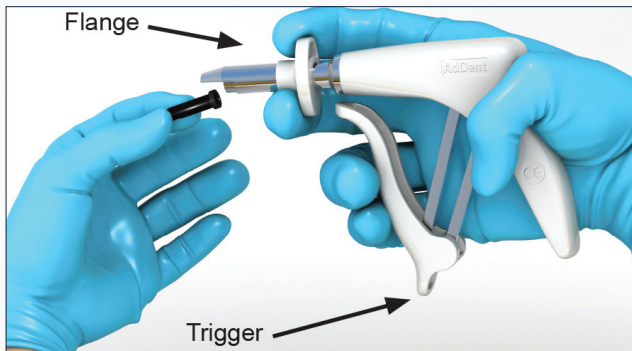
The CoMax has a special patented ergonomic mechanism for comfortable handling. The handle minimizes the dispensing force needed to express heavily filled composites. The top flange is pulled back to insert a compule, and easily pulled back again to release it. The CoMax accepts most mfg.'s composite compules. The unit is autoclaveable, and carries a 2 year warranty. The CoMax Composite Dispenser received a 5 Star Award from Reality Publishing.

FEATURES

- Accepts most composite compules
- Ergonomic handle and trigger
- High mechanical advantage mechanism
- Easy one hand unloading
- Hi tech plastic and stainless steel materials
- Completely autoclaveable
- Expresses all Composite
- Warmed composite provide quicker cures
- Less Microleakage
- Stronger restoration
- Less shrinkage stress

BENEFITS

- Universal operation
- Easy to hold and use
- Lower dispensing force required
- Time saving operation
- Robust long life operation
- Improved asepsis
- Saves money



Loading the compule into the CoMax dispenser



Holding the CoMax to express composite



Removing the used compule from the CoMax dispenser

Follow us on social media: [f](#) [in](#) [t](#) [v](#) info@addent.com



AdDent
INCORPORATED

Advancing Dental
Excellence

ISO 9001 CERTIFIED & 13485 COMPLIANT | ALL PRODUCTS ARE FDA CLEARED



Made in the USA | www.addent.com

TRIMAX™

COMPOSITE INSTRUMENT



ISO 9001 CERTIFIED & 13485 COMPLIANT | ALL PRODUCTS ARE FDA CLEARED

AdDent INCORPORATED *Advancing Dental Excellence*
Made in the USA | www.addent.com

TRIMAX

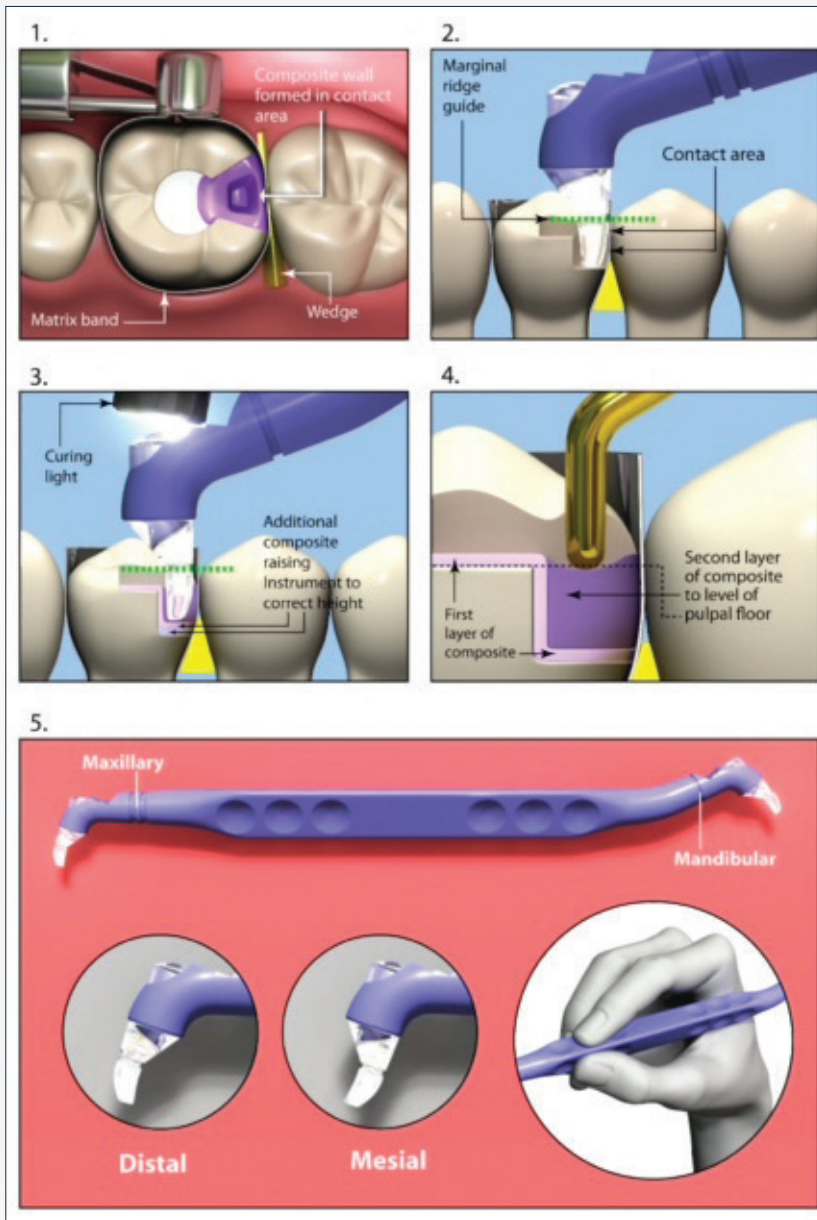
The Trimax is a composite contact instrument. By placing the tip into deep restorations or tight anatomically contact areas the operator can polymerize deep restorations with correct proximal anatomy. The micro light guide has a marginal ridge guide that “lights up” when curing and can be used in a number of different positions. Some of the benefits include: Improved polymerization and reduced shrinkage, eliminates open contact areas, ideal anatomical form for premolar, molar and large molar restorations. The tip provides a guide for proper marginal ridge height for improved anatomy.

FEATURES

- Holds matrix band in contact
- Special micro lite guide tip
- Three different tip sizes

BENEFITS

- Eliminates open contacts
- Improves polymerization
- Perfectly fits proximal box preparation



Occlusal view of a light cured composite restoration in the initial stage of preparation. The procedure is simple. The band and wedge are placed. Composite is then layered so that the marginal ridge guide of the instrument is lined up with the marginal ridge of the adjacent tooth. The micro light guide is pressed against the band and adjacent tooth and the composite is cured.

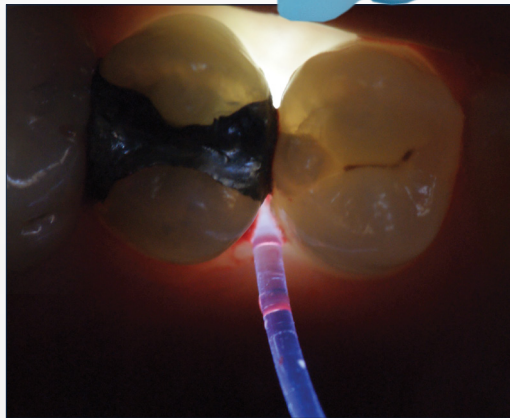


Sectional view of what the cured composite looks like from the lingual. Tip size: Premolar, Standard Molar and Large Molar

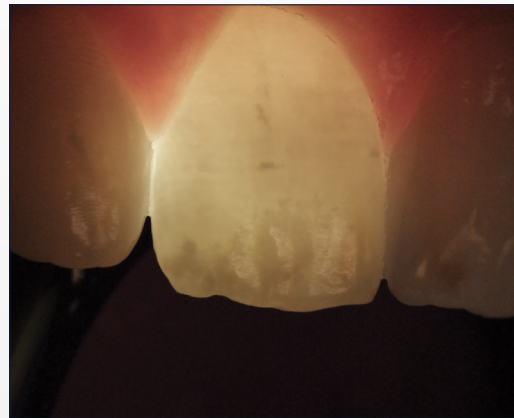


MICROLUX 2™

TRANSILLUMINATOR



Checking Inter-proximal Caries



White Spot Lesions

Photos Courtesy of Dr. Howard Strassler

MICROLUX 2 TRANSILLUMINATOR

This ergonomic new high intensity model includes new features that have been requested by many dentists. An easy to use push button controls the dual intensity operation and provides for better visualization. The battery has a low level indicator, and the unit has a voltage regulator to insure constant light output. It uses 2 easily available AAA batteries. The Microlux 2 is available with a 2 or 3 mm glass light guide. The Transillumination technique helps visualize cracks, crown fractures, root canal orifice, posterior and anterior caries. All accessories are autoclavable except for disposable fiber light guides. Take out the reference to the Microlux.

The accessory attachments include Proximal caries attachment with .75mm single use fiber, Endo Lite attachment with 1 mm single use fiber, Perio Probe attachment 0.75 mm single use fiber, 5 packed lighted autoclavable mirrors, and Pedo 2mm glass light guide. Protective sleeves are available. The ergonomic design provides an anti-roll feature.

FEATURES

- Slim Ergonomic Design
- High & Low Output Levels
- Conveniently Located Control Button
- Battery Voltage Regulator
- Battery Low Level Indicator
- Auto Turn Off

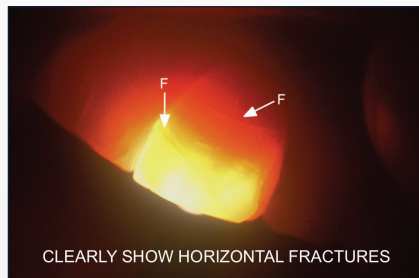
BENEFITS

- Easy Handling
- Better Visualization (High Setting), Better Photos (Low Setting)
- Easy One Finger Operation
- Constant Light Output
- Advanced Notification To Change The Battery
- Multiple Applications with One Device
- The Microlux 2 Unit Will Automatically Turn Itself Off After 7 Minutes Of Use To Conserve Battery Power



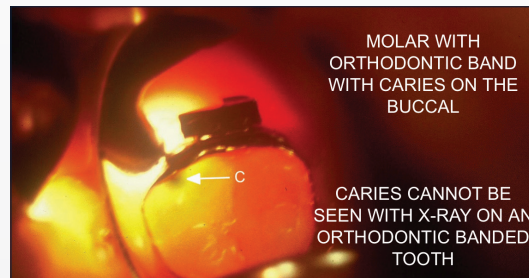
OTHER ATTACHMENTS AVAILABLE FOR THE MICROLUX 2:

3 mm glass light guide, 2 mm glass light guide, Proximal caries attachment, Endo Lite attachment, Perio Probe attachment with 3, 5, and 7mm illuminated markings, 5 packed lighted mirror, and Pedo 2mm glass light guide.



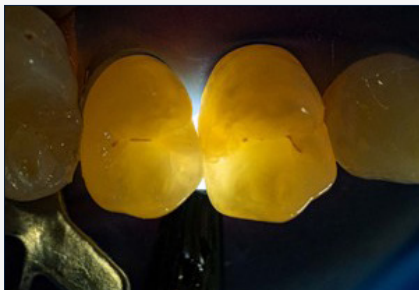
CLEARLY SHOW HORIZONTAL FRACTURES

Showing Horizontal Fracture Line

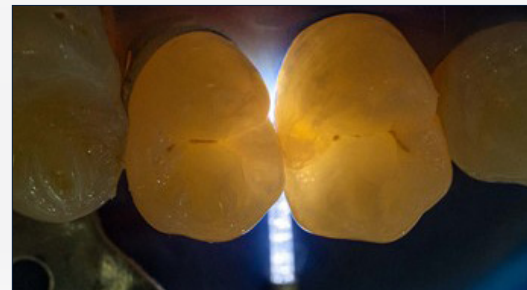


CARIES CANNOT BE SEEN WITH X-RAY ON AN ORTHODONTIC BANDED TOOTH

Orthodontic Band with Caries on the Buccal



Using 3 mm Glass Light Guide



Using 0.75 mm Proximal Light Fiber Optic

Follow us on social media: [f](#) [in](#) [t](#) [v](#) info@addent.com



AdDent
INCORPORATED

Advancing Dental
Excellence

ISO 9001 CERTIFIED & 13485 COMPLIANT | ALL PRODUCTS ARE FDA CLEARED



Made in the USA | www.addent.com

BIO/SCREEN[®]

ORAL EXAM SYSTEM



BIO/SCREEN ORAL EXAM LIGHT

The Bio/Screen Oral Exam Light is a device intended for use as an adjunct to traditional oral examination to enhance the visualization of oral mucosal abnormalities. The Bio/Screen uses 5 powerful violet LEDs that shows biofluorescence in the oral cavity without turning off the room lights. It is powered by an internal rechargeable lithium ion battery. An on/off push button is located on the viewing side. An eyepiece and an optical viewing filter increases contrast between healthy and abnormal tissue. A battery charge indicator is located on the viewing side of the handle.

FEATURES

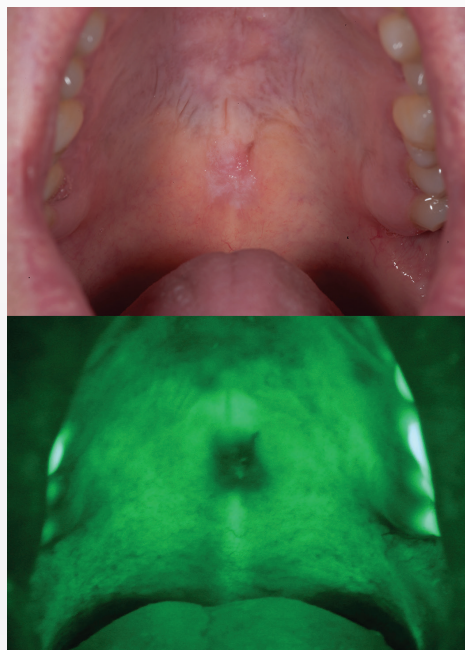
- The Bio/Screen has a special optical filter to improve contrast between healthy and abnormal tissue and to improve visualization. It does not require a special rinse.
- Bio/Screen Battery – The lithium ion battery pack is rated for 500 full recharge cycles, approximately 5 years of use. The battery pack is protected by means of a built-in safety circuit.
- Improved thermal design has no fan for quiet operation.
- Light Output Regulation – the Bio/Screen output LEDs maintain full power until battery is depleted.
- Auto Shut Off – To conserve battery power, once activated and after five minutes of continuous on time, the violet output LEDs will automatically turn off and the unit will return to standby mode.
- Demonstration video available on our website www.addent.com



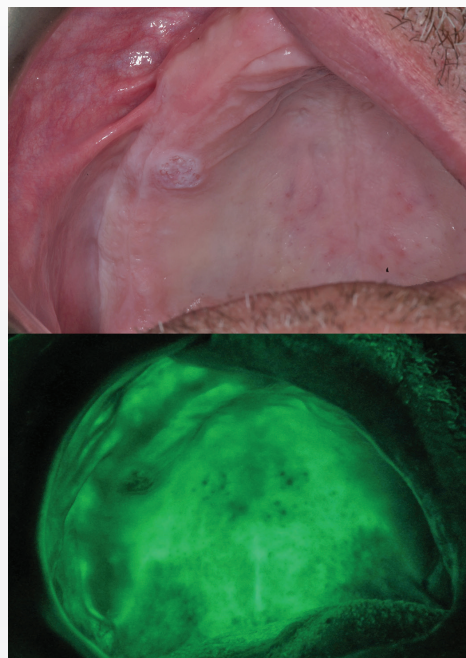
YOUR BIO/SCREEN ORAL EXAMINATION LIGHT PACKAGE INCLUDES:

1. Bio/Screen Unit
2. Li-Ion Smart Charge
3. Disposable Lens Covers
4. Patient Eyewear

Images courtesy of Dr. Howard Strassler



Mild Dysplasia



Moderate Dysplasia

Clinical & using Bio/Screen

Follow us on social media: [f](#) [in](#) [t](#) [v](#) info@addent.com



Addent
INCORPORATED

Advancing Dental
Excellence

ISO 9001 CERTIFIED & 13485 COMPLIANT | ALL PRODUCTS ARE FDA CLEARED



Made in the USA | www.addent.com

Rite-lite PRO™

MULTISPECTRAL/HI CRI SHADE LIGHT



RITE-LITE PRO MULTISPECTRAL/HIGH CRI SHADE LIGHT

Rite-Lite PRO Shade Matching Unit with HIGH-CRI LED's which recreate the visual spectrum produced by natural sunlight. The Rite-Lite PRO Shade Matching Light is a device that incorporates diffused L.E.D. technology to simulate various lighting conditions to aid in the matching of teeth and all types of dental restorations. It is used by both dental professionals and dental ceramists.

FEATURES

- Three modes of visible light for shade taking to simulate varying lighting conditions found in indoor and outdoor environments
- Visible light spectra produced with Hi CRI LED's
- Three selectable intensity levels for visible spectra modes
- Black Light mode for examining restoration fluorescence
- Accessory cross polarizing filter attachment to permit observation of tooth characterization without surface reflection
- Regulated Output: Rite-Lite PRO features a voltage regulator
- Rechargeable Li-Ion battery
- Five minute auto shutoff feature conserves battery power
- USB power supply for charging unit
- LED Battery charge and battery status indicator

BENEFITS

- Shade matching under multiple lighting conditions insures a better shade match
- Recreate the visual spectrum produced by natural sunlight
- Better visualization and control of glare
- Match restoration to natural tooth fluorescence
- Reduces glare and reflective highlights to visualize natural anatomic defects
- Ensures consistent light output over the useful battery life
- Lasts for approximately 5 years with normal use
- Prolongs battery life
- Reduces operation cost
- Indicates when to recharge unit

RITE-LITE PRO OFFERS THREE MODES OF LIGHT FOR SHADE TAKING:

1. Color-corrected light at a color temperature of 5500° Kelvin.
2. Incandescent – room light at 3200° Kelvin. This is found in many indoor environments.
3. Ambient light at 3900° Kelvin. This is a combination of room light and daylight.

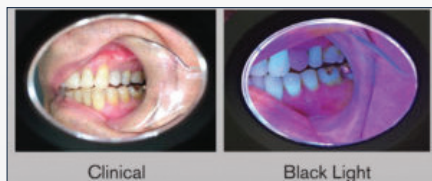
Rite-Lite PRO offers three levels of light intensity for better visualization.

Black Light setting for matching restorations to natural dentition fluorescence.

TO USE:

Choose shade at 5500°K. Verify the selected shade using 3200°K (incandescence) and 3900°K (ambient). Shade should match in all color temperatures.

The Rite-Lite PRO is powered by 24 L.E.D.'s (including black light LED's), rechargeable battery and has a voltage regulator. A pad of 25 neutral color tabs is included and are used to standardize the background while shade taking.



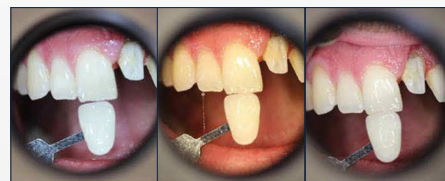
RESTORATION VIEWED WITH FLUORESCENCE MODE

Research shows that natural teeth fluoresce at wavelengths below 400 nm, i.e.- black light. Wavelengths below 400 nm are part of the spectrum of various indoor and outdoor lighting environments. Therefore, if we are to get a perfect shade match for porcelain or composite materials, they should fluoresce in the same manner as natural teeth. The cell phone photos show the effect of this mismatch when viewed with the Rite-Lite PRO.



HIGH COLOR RENDITION INDEX (CRI) FOR COLOR ACCURACY

The Rite-Lite High CRI LED's recreate the visual spectrum produced by natural sunlight. CRI is a measure of how accurately an LED light source or any artificial light source reveals an object's true colors. The higher the CRI, the better the artificial light source is at rendering colors accurately.



RITE-LITE PRO WITH POLARIZING FILTER

- Eliminates Reflection
- Provides enhanced visualization of tooth for color, depth and transparencies
- Enhances the visualization of internal details and individual characterization

Follow us on social media: [f](#) [in](#) [t](#) [v](#) info@addent.com



AdDent
INCORPORATED

Advancing Dental
Excellence

Made in the USA | www.addent.com

ISO 9001 CERTIFIED & 13485 COMPLIANT | ALL PRODUCTS ARE FDA CLEARED

