



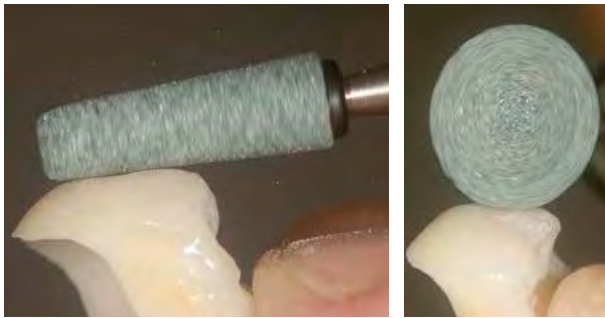
# PRODUCT CATALOGUE

# Dura-Green



Silicon carbide stones with a ceramic binder

Dura-Green stones are made of high-quality silicon carbide and are exceptional for fast and splinter proof contouring and finishing of porcelain, composite, precious alloys, and amalgam.



In the dental laboratory the extensive range of shapes helps to optimally produce the individual characteristics of the surface texture of front teeth with their vertical and horizontal structures. In the dental practice Dura-Green stones are used for quick and simple contouring and finishing of restorations made of all modern filling materials.

- Dura-Green stones can be cleaned or customised to any individual shape with the Abrasives Dresser.



## BENEFITS

- Precise concentricity
- Low vibration performance
- Consistent cutting action
- Binder matched exactly to the grinding particles
- Long-lasting operating life
- Optimal cutting performance

### Indications

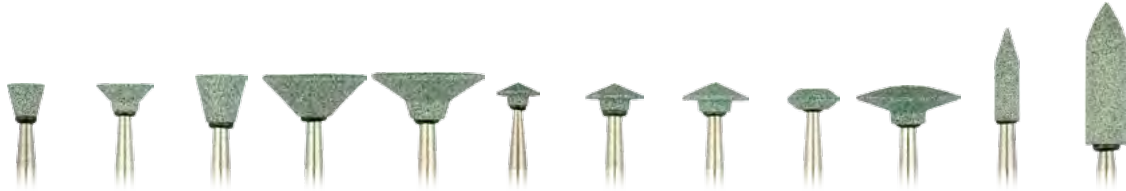
- CHAIRSIDE  
Contouring and finishing of porcelain, composites, precious metal and amalgam
- IN THE DENTAL LABORATORY  
Contouring and finishing porcelain, indirect composites and metals

### Range of Application

Suitable for the following materials:  
porcelain, composite, precious alloys and amalgam



Shape	CN1	CN2	CY2	CY3	FL1	FL2	FL3	FL4	FL5	IC1	IC2	IC3
ISO No.	024	037	025	028	030	025	030	045	065	030	032	050
HP 12 pcs.	0002		0006	0007	0009	0010	0011	0012	0013	0014	0015	0016
HP 72 pcs.						HG10				HG14		HG16
CA 12 pcs.	0052	0053			0059	0060	0061	0062				0066
FG 12 pcs.	0101		0103			0104					0105	



Shape	IC4	IC5	IC6	IC7	IC9	KN1	KN3	KN4	KN5	KN7	PC1	PC2
ISO No.	045	070	065	125	135	050	070	080	060	125	030	050
HP 12 pcs.	0017	0018	0019	0020	0022	0023	0025	0026	0027	0029	0030	0031
HP 72 pcs.		HG18		HG20	HG22					HG29		
CA 12 pcs.											0080	0081



Shape	RD1	RD2	RD3	RD4	RE1	RE2	TC1	TC2	TC3	TC4	WH3	WH4
ISO No.	030	024	036	050	062	062	020	025	030	040	065	060
HP 12 pcs.	0032	0033	0034	0035	0036	0037	0039	0040	0041	0042	0045	0046
HP 72 pcs.										HG42		
CA 12 pcs.	0082	0083	0084		0086		0089	0090		0092	0095	0096
FG 12 pcs.	0107	0108					0109					



Shape	WH5	WH6
ISO No.	065	130
HP 12 pcs.	0047	0048
HP 72 pcs.		HG48
CA 12 pcs.		0098



Min<sup>-1</sup> Recom. 5,000-20,000 / Max. 30,000 / CP 3-5 N

PN	Quantity	Product
0002-0098	12 pcs.	Dura-Green stones, HP and CA shank
0101-0109	12 pcs.	Dura-Green stones, FG shank
HG10-HG48	72 pcs.	Dura-Green stones, HP shank

Info: Not suited for the processing of ceramic alloys!

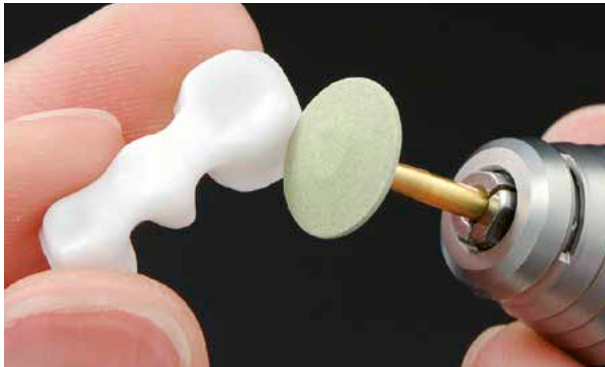
# Dura-Green DIA



## Vitrified-bonded diamond abrasives

Dura-Green DIA are designed for contouring porcelains, ceramic copings, fine anatomical details or fragile sensitive margin areas. Thanks to densely packed diamonds embedded throughout Dura-Green DIA provide smoother surfaces on all-ceramic and zirconia restorations and an enhanced performance versus silicon carbide instruments.

■ Low vibration and minimal heat generation make the abrasives comfortable and safe to use, eliminating any risk of chipping or microcracking. The instruments feature high edge stability and enhanced performance at the same time.



 **Min<sup>-1</sup>** Max. 30,000

PN	Quantity	Product
0154, 0156, 0157	2 pcs.	Dura-Green DIA, shapes CY5, KN7, WH6, HP shank
0155, 0158, 0159, 0161, 0162	3 pcs.	Dura-Green DIA, shapes FL3, IC5, RD3, TC2, TC4, HP shank
0163-0165	3 pcs.	Dura-Green DIA, shapes FL3, RD3, TC2, CA shank
0153	1 box	Dura-Green DIA, 1 each CY5, KN7, TC4, HP shank
0166	1 box	Dura-Green DIA, 1 each FL3, RD3, TC2, CA shank
0167-0168	3 pcs.	Dura-Green DIA, shapes FL3, RD2, FG shank
0504	1 pc.	SHOFU Adjuster (see page 50)

## BENEFITS

- Efficient and material-friendly processing
- Minimised risk of microcracking
- Low contact pressure
- Minimal heat generation
- High edge stability

### Indications

Contouring and finishing indirect restorations made of ceramics, zirconia, lithium disilicate etc.

### Range of Application

Suitable for the following materials:  
All-zirconia or zirconia-based restorations, lithium disilicate, alumina, pressed & layered ceramics and metal surfaces



The SHOFU Adjuster, made of alumina, is ideal for instrument cleaning and individual shape adjustment (see page 50).



Shape	CY5	FL3	IC5	KN7	RD2	RD3	TC2	TC4	WH6
ISO No.	056	031	070	125	024	035	025	040	125
HP	0156	0158	0162	0154		0159	0161	0155	0157
CA		0163				0164	0165		
FG		0168			0167				

# Dura-White



Vitrified-bonded alumina stones

For finishing of enamel, glass ionomer cements, composites, porcelain and prepared tooth abutment, none exceeds the performance of Dura-White stones. Made of micrograined alumina grits, each "Arkansas" stone is perfectly balanced and suited for very fine finishing and smoothing of various dental materials.



Shape	CN1	CY2	FL1	FL2	FL3	IC4	KN1	RD1	RD2	RE1	TC1	TC4
ISO No.	024	025	030	025	030	045	050	030	024	062	020	040
HP	0201		0202	0203	0204	0205		0207	0208	0209	0210	0211
CA	0221		0222	0223	0224			0227	0228	0229	0230	
FG	0241	0243	0240	0244			0246	0247	0248		0249	



Shape	WH1	WH4
ISO No.	040	060
HP		0212
CA		
FG	0250	



## BENEFITS

- Precise concentricity
- Low vibration grinding
- Consistent finishing performance
- Economical
- High edge stability
- Long-lasting service life
- Wide range of shapes

### Indications

#### ■ CHAIRSIDE

Finishing and very fine working of e. g. composite or glass ionomer filling materials, porcelain, tooth enamel, e. g. smoothing crown preparations after contouring with diamond abrasives

#### ■ IN THE DENTAL LABORATORY

Very fine contouring and fine finishing of porcelain or composite restorations

### Range of Application

Suitable for the following materials:  
porcelain, composite, compomer, dental hard tissue, glass ionomer cement

PN	Quantity	Product
0201-0250	12 pcs.	Dura-White stones, HP, CA, FG shank



Min<sup>-1</sup> Recom. 5,000-20,000 / Max. 30,000 / CP 2 N

# Brownie ■ Greenie ■ Supergreenie



For precious alloys and amalgam

Polishers

Impregnated with polishing ingredients these silicone polishers are recommended for a fast and brilliant polishing of precious alloys and amalgam. Brownies are used for prepolishing, Greenies for polishing and Supergreenies (with yellow banded shank) for high gloss polishing. Without the need of any additional polishing paste the high gloss arises from the use of the silicone polisher itself, which is impregnated with high-quality abrasive agents.



## BENEFITS

- High gloss in 3 polishing steps
- Precise concentricity
- Customisable
- Low vibration polish
- Optimal ratio between speed and contact pressure
- Low heat generation
- Fast and efficient use

### Indications

#### ■ CHAIRSIDE

Prepolishing, polishing and high-gloss polishing of metallic restorations such as inlays, onlays, crowns and bridges in the patient's mouth

#### ■ IN THE DENTAL LABORATORY

Prepolishing, polishing and high-gloss polishing of metallic restorations such as inlays, onlays, crowns and bridges



**Min<sup>-1</sup>** Recom. 5,000 - 7,000 / Contact Pressure 1 - 2 N  
Water is needed for amalgam polishing.



	Shape	Cup	Minipoint	KN7	PC2	WH6	Floppie	Disk	Unmounted wheel
	ISO No.	065	030	125	050	120	220	160	220
Brownie	HP 12 pcs.			0271	0272	0273	0458		0453
	CA 12 pcs.	0401	0403	0281	0282	0283		0405	
	CA 72 pcs.	H401	H403						
	FG 12 pcs.	0411	0413						
	FG 72 pcs.	H411	H413						
Greenie	HP 12 pcs.			0274	0275	0276	0459		0454
	CA 12 pcs.	0402	0404	0284	0285	0286		0406	
	CA 72 pcs.	H402	H404						
	FG 12 pcs.	0412	0414						
	FG 72 pcs.	H412	H414						
Supergreenie	HP 12 pcs.			0277	0278	0279			454A
	CA 12 pcs.	402A	404B	0287	0288	0289			
	FG 12 pcs.	412A	414B						



Brownie, Greenie and Supergreenie polishes are available in boxes of 12 pieces. Brownie and Greenie cups and minipoints are also available in economical laboratory packs of 72 pieces.



PN	Quantity	Product
0271-0289	12 pcs.	Brownie, Greenie, Supergreenie shapes: KN7, PC2, WH6, HP and CA shank
0401-0414	12 pcs.	Brownie, Greenie, shapes: cup, minipoint, disk, CA and FG shank
0453, 0454, 454A	12 pcs.	Brownie, Greenie, Supergreenie shape: unmounted wheel
0458, 0459	12 pcs.	Brownie, Greenie shape: floppie, HP shank
402A, 412A, 404B, 414B	12 pcs.	Supergreenie shapes: cup, minipoint, CA and FG shank
H401-H414	72 pcs.	Brownie, Greenie shapes: cup, minipoint, CA and FG shank

# Ceramisté



For porcelain and tooth enamel

Polishers

Ceramisté silicone polishers were designed specifically for the polishing of porcelain and tooth enamel. The Ceramisté system consists of Ceramisté Standard, Ceramisté Ultra and Ceramisté Ultra II polishers for all polishing steps.



**Min<sup>-1</sup>** Recom. 10,000-12,000 / Max. FG shank: 15,000,  
Max. others: 20,000 / CP 1-2 N

## BENEFITS

- Three coordinated polishing steps
- Optimal ratio between speed and contact pressure
- Customisable
- Low vibration polishing
- Long-lasting service
- No polishing paste is needed



	Shape	Bullet	Cup	Knife	Wheel	Midpoint	KN7	PC2	WH6	Unmounted wheel
	ISO No.	040	065	090	090	060	125	050	120	220
Standard (prepolish)	HP						0261	0262	0263	0451
	CA	0251	251A	0252	0253	253A				
	FG					253B				
Ultra (polish)	HP						0264	0265	0266	0452
	CA	0254	254A	0255	0256	256A				
	FG					256B				
Ultra II (superpolish)	HP						0267	0268	0269	452A
	CA	0257	257A	0258	0259	259A				
	FG		257B			259B				

### Indications

Systematic polishing up to a high gloss of porcelain and tooth enamel in three steps:

- Prepolishing Ceramisté Standard
- Polishing Ceramisté Ultra with yellow banded shank
- High gloss polishing Ceramisté Ultra II with white banded shank

PN	Quantity	Product
0251-0269	12 pcs.	Ceramisté Standard, Ultra, Ultra II shapes: KN7, PC2, WH6, HP shank shapes: bullet, knife, wheel, CA shank
251A-259A	12 pcs.	Ceramisté Standard, Ultra, Ultra II shapes: cup, midpoint, CA shank
253B-259B	12 pcs.	Ceramisté Standard, Ultra, Ultra II shapes: cup, midpoint, FG shank
0451, 0452, 452A	12 pcs.	Ceramisté Standard, Ultra, Ultra II shape: unmounted wheel



# SoftCut



For porcelain restorations

The two-step system SoftCut was developed for the polishing of fragile porcelain veneers, inlays and onlays. The two instruments of the system, SoftCut PA and SoftCut PB, are silicone polishers with integrated polishing agents. By varying the pressure, the polishing performance can be adjusted: the lighter the pressure, the higher the gloss.



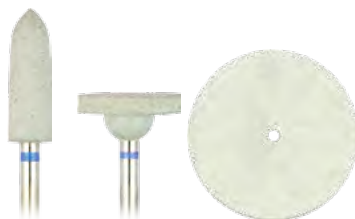
PA

PB

## Indications

Contouring and polishing of porcelain

- SoftCut PA (with green banded shank) for polishing after rough finishing (for example with Dura-Green stones)
- SoftCut PB (with blue banded shank) for polishing after fine finishing (for example with Dura-White stones)



	Shape	PC2	WH6	Unmounted wheel
	ISO No.	050	120	220
SoftCut PA	HP		0564	0595
SoftCut PB	HP	0563	0565	0596

## BENEFITS

- Contouring and polishing in just one step
- Precise concentricity
- Efficient use
- Low heat generation



### Polishers:

**Min<sup>-1</sup>** Recom. 5,000-20,000 / Max. 20,000 / CP 1-2 N



### Unmounted wheel:

**Min<sup>-1</sup>** Recom. 5,000-15,000 / Max. 15,000 / CP 1-2 N

PN	Quantity	Product
0563-0565	12 pcs.	SoftCut PA / PB shapes: PC2, WH6, HP shank
0595-0596	12 pcs.	SoftCut PA / PB shape: unmounted wheel

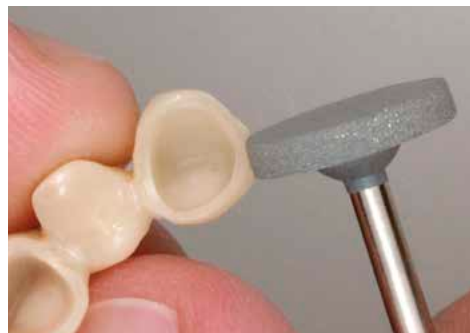
# CeraMaster Coarse ■ CeraMaster



For ceramic restorations

Polishers

These silicone polishers are densely filled with natural diamond particles. They are durable and designed for quick finishing and polishing of ceramic restorations, to provide a smooth surface. The combination of the different particle sizes of CeraMaster Coarse (dark-grey polishers) and the finer CeraMaster polishers (blue and white banded shank) ensures an efficient concept for a homogeneous surface treatment.



## Indications

- CeraMaster Coarse polishers are designed for a quick finishing and prepolishing of ceramic restorations in one step only. They particularly show their forte when adjusting ceramic coping margins made from materials such as alumina and zirconia.
- For superpolishing CeraMaster polishers are recommended. When using the CeraMaster polishers there is no need to use an additional polishing paste, as the high shine is produced by using the diamond-impregnated silicone polishers themselves.

## BENEFITS

- Silicone polisher with integrated diamond particles
- Individually customisable
- No polishing paste is needed
- Long-lasting service life
- Low heat generation



**Polishers:**  
**Min<sup>-1</sup>** Recom. 10,000- 15,000 / Max. 20,000 / CP 1.5 N

**Unmounted wheel:**  
**Min<sup>-1</sup>** Recom. 5,000- 10,000 / Max. 15,000 / CP 1.5 N

## info

When using the polishers intraorally, operate each polisher under dry conditions with intermittent strokes and supply compressed air to avoid an excess overheating of the ceramic and to protect the pulp.



	Shape	Bullet	Knife	Cup	Minipoint	KN7	WH6	Unmounted wheel
	ISO No.	040	090	065	030	125	120	220
CeraMaster Coarse	HP	126C			129C	127C	128C	132C
	CA	121C	122C	123C	124C			
CeraMaster	HP	0126			0129	0127	0128	
	CA	0121	0122	0123	0124			



Besides the single instruments there are two CeraMaster Coarse and CeraMaster assortments with four different polishers each available.



PN	Quantity	Product
<b>INDIVIDUAL ARTICLES</b>		
121C-124C, 126C-129C	3 pcs.	CeraMaster Coarse, HP and CA shank
132C	1 pc.	CeraMaster Coarse, unmounted wheel + HP mandrel
0121-0124, 0126-0129	3 pcs.	CeraMaster, HP and CA shank
<b>ASSORTMENTS</b>		
130C	1 box	CeraMaster Coarse, HP shank, 1 each bullet, minipoint, KN7, WH6
125C	1 box	CeraMaster Coarse, CA shank, 1 each bullet, knife, cup, minipoint
0130	1 box	CeraMaster, HP shank, 1 each bullet, minipoint, KN7, WH6
0125	1 box	CeraMaster, CA shank, 1 each bullet, knife, cup, minipoint

# CompoMaster Coarse ■ CompoMaster



For composite

Polishers

The silicone polishers are impregnated with a carefully balanced blend of diamond particles. They are durable and designed for a quick finishing and polishing of composite restorations to provide a uniform and smooth surface.



The different grains of the coarse CompoMaster Coarse in combination with the finer CompoMaster polishers (with yellow and white banded shank) form an efficient approach to a homogeneous surface treatment.

## Indications

- CompoMaster Coarse polishers have been designed for contouring and prepolishing composite surfaces in one step.
- The use of CompoMaster instruments provides superpolished restorations.



## BENEFITS

- Silicone polishers with integrated diamond particles
- Precise concentricity
- Optimal ratio between speed and contact pressure
- Individually customisable
- No polishing paste is needed
- Particularly long-lasting tool life
- Low vibration processing
- Low heat generation



There are two CompoMaster Coarse and CompoMaster assortments with four different polishers each available.



	Shape	Bullet	Knife	Cup	Minipoint	KN7	WH6	Unmounted wheel
	ISO No.	040	090	065	030	125	120	220
CompoMaster Coarse	HP	116C			119C	117C	118C	131C
	CA	111C	112C	113C	114C			
CompoMaster	HP	0116			0119	0117	0118	
	CA	0111	0112	0113	0114			

PN	Quantity	Product
<b>INDIVIDUAL ARTICLES</b>		
111C-114C, 116C-119C	3 pcs.	CompoMaster Coarse, HP and CA shank
131C	1 pc.	CompoMaster Coarse, unmounted wheel + HP mandrel
0111-0114, 0116-0119	3 pcs.	CompoMaster, HP and CA shank
<b>ASSORTMENTS</b>		
120C	1 box	CompoMaster Coarse, HP shank, 1 each bullet, minipoint, KN7, WH6
115C	1 box	CompoMaster Coarse, CA shank, 1 each bullet, knife, cup, minipoint
0120	1 box	CompoMaster, HP shank, 1 each bullet, minipoint, KN7, WH6
0115	1 box	CompoMaster, CA shank, 1 each bullet, knife, cup, minipoint



**Polishers:**

Min<sup>-1</sup> Recom. 5,000 - 15,000 / Max. 20,000 / CP 0.5 N



**Unmounted wheel:**

Min<sup>-1</sup> Recom. 5,000 - 10,000 / Max. 15,000 / CP 0.5 N

## info

When using the polishers intraorally, operate each polisher under dry conditions with intermittent strokes and supply compressed air to avoid an excess overheating of the ceramic and to protect the pulp.

# OneGloss M <sup>NEW!</sup> ■ OneGloss ■ OneGloss PS



One-step finishers and polishers for composites and enamel

These one-step silicone polishers impregnated with alumina allow you to perfectly finish and polish all types of composite restorations, simply by varying the contact pressure step by step from finishing to polishing. The OneGloss M instruments, with heads mounted on stainless-steel contra-angle shanks, are sterilisable. The unmounted OneGloss instruments and the OneGloss PS instruments, with heads mounted on sturdy plastic mandrels, are disposable.

By simply altering the contact pressure, you can go from finishing to polishing with only one instrument:

- Finishing with heavy contact pressure (approx. 1 N)
- Polishing with feather light contact pressure (approx. 0.3 N)
- Removal of excess cement and polishing of enamel with moderate to light contact pressure
- Polishing of enamel and removal of tooth discolouration with feather light contact pressure



# Super-Snap ■ Super-Snap X-Treme



Polishing of microfilled and hybrid composites

The Super-Snap and Super-Snap X-Treme polishing system consists of coated disks and polishing strips used for the polish of microfilled and hybrid composites.



## Indications

### CHAIRSIDE

Contouring, finishing, polishing and superpolishing of composite restorations

- Contouring: Super-Snap disk black (coarse)
- Finishing: Super-Snap disk violet (medium)
- Polishing: Super-Snap disk green (fine)
- Superpolishing: Super-Snap disk red (superfine)

For interproximal finishing and polishing use Super-Snap polishing strips.

### No metal centre

Avoiding gouging and discolouration of composite and tooth enamel



### Thin and flexible disks

Bending under pressure without breaking and allowing easier access to interproximal areas

### Silicone shank protection

Elastic shank mount allows an easy placing of the disk onto the mandrel

## BENEFITS

Extremely thin and highly flexible

No metal centre

Consistent 4-step contouring, finishing and polishing system

Coordinated polishing strips for interproximal areas

No gouging of enamel or restoration

Secure hold of the disk onto the mandrel (maximum control during polishing)



Min<sup>-1</sup> Recom. 10,000 - 12,000 / Max. 15,000 /  
Contact Pressure 0.3 - 0.6 N





## ■ Super-Snap Disks

Super-Snap disks have elastic shank mounts which allow easy placing of the disks onto the mandrel. The disks are manufactured without a metal centre, thus avoiding gouging and discolouration of the composite or enamel. The thin disks are flexible, bending without breaking and allowing easier access to interproximal areas. The disks are available with the safe side down, safe

side up and double-sided coated and come in standard (ø 12 mm) and mini size (ø 8 mm).

## ■ Super-Snap Polystrips

The Super-Snap polishing system includes polishing strips, which are colour-coordinated to the disks with the same grits. They offer outstanding results in surface treatment and polishing of interproximal areas.

	Contouring		Finishing				Polishing		Superpolishing	
Disks										
	L506	L507	L508	L509	L528	L522	L501	L519	L502	L521
	Black (coarse)		Violet (medium)				Green (fine)		Red (superfine)	
Mandrels										
	0438		0439				0440			
	FG		CA				CA (resin)			
Polystrips										
	L525						L526			
	Black (coarse) / Violet (medium)						Green (fine) / Red (superfine)			

PN	Quantity	Product
<b>Super-Snap</b>		
0500	1 pc.	Super-Snap Rainbow Technique Kit, CA shank (see page 28)
0505	1 pc.	Super-Snap Mini-Kit, CA shank
L506	50 pcs.	Super-Snap disks, black (coarse), safe side down
L507	50 pcs.	Super-Snap mini disks, black (coarse), safe side down
L508	50 pcs.	Super-Snap disks, violet (medium), safe side down
L509	50 pcs.	Super-Snap disks, violet (medium), safe side up
L528	50 pcs.	Super-Snap disks, violet (medium) double-sided coated
L522	50 pcs.	Super-Snap mini disks, violet (medium) double-sided coated
L501	50 pcs.	Super-Snap disks, green (fine), double-sided coated
L519	50 pcs.	Super-Snap mini disks, green (fine) double-sided coated
L502	50 pcs.	Super-Snap disks, red (superfine), double-sided coated
L521	50 pcs.	Super-Snap mini disks, red (superfine), double-sided coated
L525	100 pcs.	Super-Snap Polystrips, black / violet (coarse / medium)
L526	100 pcs.	Super-Snap Polystrips, green / red (fine / superfine)

PN	Quantity	Product
<b>Super-Snap X-Treme</b>		
0508	1 pc.	Super-Snap X-Treme Technique Kit, CA shank (see page 28)
0506	1 pc.	Super-Snap X-Treme Standard Disk Kit, 50 each Super-Snap X-Treme disks green and red
0507	1 pc.	Super-Snap X-Treme Mini Disk Kit, 50 each Super-Snap X-Treme mini disks green and red
L511	50 pcs.	Super-Snap X-Treme disks, green (fine), double-sided coated
L512	50 pcs.	Super-Snap X-Treme disks, red (superfine), double-sided coated
L531	50 pcs.	Super-Snap X-Treme mini disks, green (fine), double-sided coated
L532	50 pcs.	Super-Snap X-Treme mini disks, red (superfine), double-sided coated
<b>Mandrels</b>		
0438	6 pcs.	FG mandrel *
0439	6 pcs.	CA mandrel, steel
0440	100 pcs.	CA mandrel, resin

\* Use FG shank only if slow running motors with FG mounts are available.

Super-Snap disks, Super-Snap X-Treme disks and Polystrips are disposable.

# Super-Snap ■ Super-Snap X-Treme (continued from page 27)

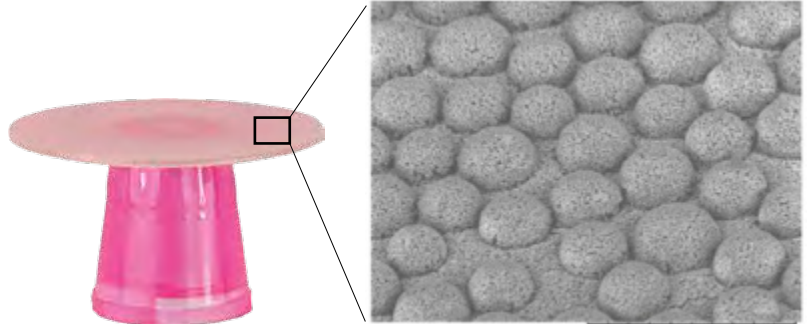
Polishing of microfilled and hybrid composites

## ■ Super-Snap X-Treme Disks

The Super-Snap X-Treme disks – an enhancement of the original green and red Super-Snap disks – are thicker to allow an enhanced contact pressure during polishing. They feature a longer service life and an increased stiffness, while also maintaining their well-known flexibility in interproximal areas.

For the first time the red Super-Snap X-Treme disks are manufactured with an advanced 3D polishing technology. Semispherical shaped alumina grits allow space for ground debris discharge and reduce clogging and secondary scratches.

Super-Snap X-Treme disks (standard and mini) are double-sided coated.



L D3.1 x400 200 µm



Super-Snap Rainbow Technique Kit

The kit contains 180 coordinated disks in four different grits (100 pcs. standard / 80 pcs. mini), 40 Polystrips, 2 Dura-White stones (CN1 and FL2), 1 CompoSite Fine midpoint and 4 CA steel mandrels.



Super-Snap X-Treme Technique Kit

Included are 160 disks in four different grits (80 pcs. Super-Snap / 80 pcs. Super-Snap X-Treme), 40 Polystrips, 2 Dura-White stones (CN1 and FL2), 2 CompoSite and CompoSite Fine midpoint each as well as 4 CA steel mandrels.



Super-Snap Mini-Kit

The kit contains 48 disks in all available grits (32 pcs. standard / 16 pcs. mini), 1 CompoSite Fine midpoint and 1 CA mandrel.



Super-Snap X-Treme Disk Kits

The Super-Snap X-Treme Standard Disk Kit contains 50 pcs. each red and green standard disks, while the Super-Snap X-Treme Mini-Disk Kit contains 50 pcs. each red and green mini disks.



# Super-Snap Buff Disk ■ Buff Mini-Disk



For composites, porcelain and gold restorations

The Super-Snap Buff Disks and Buff Mini-Disks feature a synthetic felt polishing cloth on the outer surface which retains expensive polishing pastes with minimum splatter or waste during use. Just a feathery polishing is sufficient for producing a high lustrous shine on porcelain and composites, with the flexible disks adapting to the tooth's natural contours. The disks have no metal centres or exposed mandrels thus avoiding discolouration of composites or ridge formation. The best results can be achieved in combination with SHOFU polishing pastes.



## BENEFITS


- Polishing paste adheres to the felt coating
- Clean and economical working with polishing paste
- No metal centre

## Indications

- Felt disk for the polish of composites, porcelain or gold restorations with polishing paste

PN	Quantity	Product
L523	25 pcs.	Super-Snap Buff Disk + 1 CA mandrel
L524	25 pcs.	Super-Snap Buff Mini-Disk + 1 CA mandrel
0438	6 pcs.	FG mandrel
0439	6 pcs.	CA mandrel

Super-Snap Buff Disks and Buff Mini-Disks are disposable.

 **Min<sup>-1</sup>** Recom. 5,000 - 10,000 / Max. 10,000 / Contact Pressure 0.3 - 0.6 N

# Super-Snap SuperBuff




For composite restorations

SuperBuff is a paste-impregnated disk for high gloss polishing of direct or indirect composite restorations. Before use the felt disks simply have to be moistened with water to generate a creamy polishing paste which leads quickly to a brilliant shine of the restoration. SuperBuff disks can be used frontal or with the flat lateral edge.



## Indications

High gloss polishing of composite restorations

 **Min<sup>-1</sup>** Recom. 8,000 - 12,000 / Max. 15,000 / CP 0.8 N  
Moisten before use

PN	Quantity	Product
0535	1 pc.	Super-Snap SuperBuff Kit 25 disks, 2 mandrels, CA shank
0536	50 pcs.	Super-Snap SuperBuff disks
0438	6 pcs.	FG mandrel
0439	6 pcs.	CA mandrel

SuperBuff polishing disks are disposable.

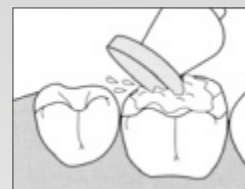


## BENEFITS

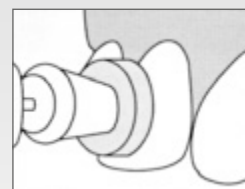
- Integrated polishing agent
- Activated by water
- Polishing of all composites
- Faster than polishing with pastes



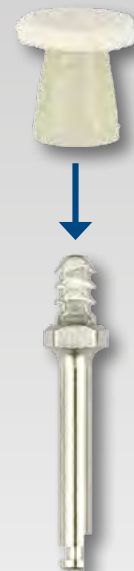
1. Moisten with water



2. Polishing compound is generated



3. High gloss polishing



# Robot Points FG

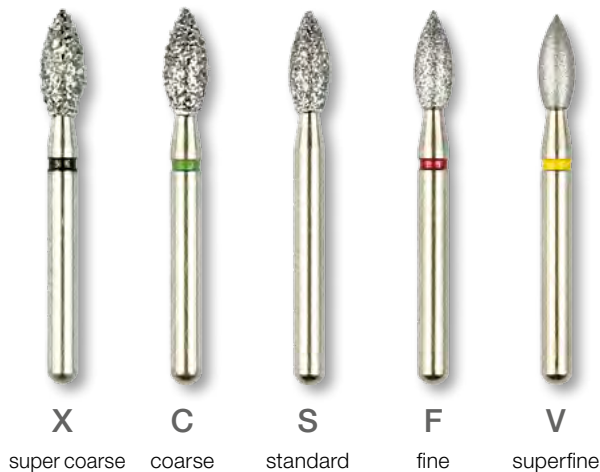


Precision diamonds for cavity and crown stump preparation and minimally invasive therapy

Exact dosages of diamond particles are evenly distributed on a one piece shank of hardened stainless steel. The ideal relation of the protruding and embedded part of the diamond particle ensures a long-lasting low vibration performance.

## Grit sizes

Besides the standard grained Robot Points (S, without shank marking), there is a range of super coarse (X, black banded shank), coarse (C, green banded shank), fine (F, red banded shank) and superfine (V, yellow banded shank) diamonds.



## Minimally invasive diamonds

Robot Points for minimally invasive therapy were developed for the maximal protection and preservation of healthy tooth substance. Six special shapes are available for the fine preparation of wedge shaped defects up to occlusal cavities.

The differently shaped, delicate abrasives have a very homogeneous grit (100 µm, standard). The very short head length (0.7 - 2.0 mm) and a slender shank neck ensure an unimpeded view on the prepared surface. For the precise preparation in the sense of the MiCD concept these Robot Points are used at a maximum speed of 300,000 rpm.



Min<sup>-1</sup> Recom. 120,000 - 450,000 / CP 0 - 0.8 N

## BENEFITS

Exact, even distribution of diamond particles

Five grit sizes: super coarse, coarse, standard, fine, superfine

Shank and working end are produced from a one-piece blank

Long-lasting

Precise concentricity

## Indications

### CHAIRSIDE

For cavity and crown preparation as well as adjusting direct restorative materials

### IN THE DENTAL LABORATORY

E. g. fine adjustments to fully anatomical designed occlusal surfaces of porcelain crowns, inlays, onlays; finishing of approximal areas

## Range of Application

Suitable for the following materials:

Tooth enamel, porcelain, composite, filling materials such as GIC and cements

## info

Robot Points should always be used intermittently with low pressure and water cooling.

The colour coding of the order number indicates the individual maximum speed:

**Cyan** max. 450,000 rpm

**Blue** max. 300,000 rpm

**Orange** max. 160,000 rpm

**Violet** max. 120,000 rpm

Shape	Straight Cylinder						Straight Cylinder, round end				Tapered Cylinder, flat end				
PN	0800-1	0801-1	0803-1	0805-1	0807-1	0808V-1	0845X-1	0845C-1	0846-1	0846F-1	0810-1	0812-1	0813-1	0814-1	0816-1
ISO No.	010	013	015	016	018	013	016	015	016	014	012	017	017	022	016
Head length (mm)	4.0	4.5	7.0	7.0	7.0	8.0	8.0	8.0	8.0	8.0	4.0	4.4	5.0	5.0	7.0

Shape	Tapered Cylinder, flat end							Tapered Cylinder, round end							
PN	817C-1	818-1	820-1	820F-1	822-1	824-1	830-1	831-1	832X-1	832-1	832F-1	833-1	833V-1	834-1	835X-1
ISO No.	019	021	017	015	020	022	013	013	018	016	015	017	018	016	019
Head length (mm)	9.0	9.0	10.0	10.0	12.0	10.0	5.0	9.0	7.0	7.0	7.0	9.0	9.0	10.0	9.0

Shape	Tapered Cylinder, round end								Tapered Cylinder, corner round						
PN	835C-1	835-1	835F-1	836-1	836V-1	837-1	838-1	839-1	839V-1	789-1	789V-1	790-1	790V-1	791-1	791V-1
ISO No.	018	018	016	021	021	023	023	023	023	018	018	021	021	018	018
Head length (mm)	9.0	9.0	9.0	9.0	9.0	9.0	11.5	9.0	9.0	4.0	4.0	5.0	5.0	7.0	7.0

Shape	Tapered Cylinder, corner round								Tapered Cylinder, needle							
PN	0792-1	0792V-1	0793-1	0793V-1	0825-1	0825V-1	0826-1	0826V-1	0847F-1	0848-1	0848F-1	0850X-1	0850-1	0850F-1	0852-1	
ISO No.	019	019	023	023	027	027	031	031	014	013	012	018	016	015	022	
Head length (mm)	10.0	10.0	10.0	10.0	3.5	3.5	3.5	3.5	6.0	8.0	8.0	10.0	10.0	10.0	10.0	

Shape	Flame										Bud				
PN	840X-1	840C-1	840-1	840F-1	840V-1	841V-1	0842-1	0842F-1	843V-1	0844-1	0880-1	0880V-1	0881-1	883X-1	883C-1
ISO No.	016	015	014	013	012	009	017	016	012	023	017	014	022	023	022
Head length (mm)	7.5	7.5	7.5	7.5	7.5	4.0	7.5	7.5	6.0	9.0	3.0	3.4	3.5	5.0	5.0

# Robot Points FG

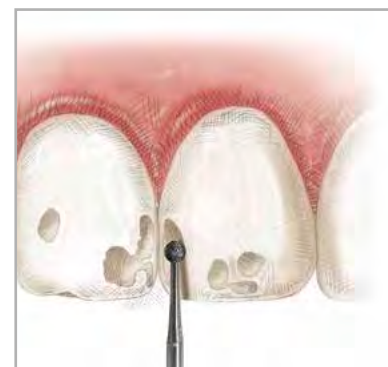
Precision diamonds for cavity and crown stump preparation and minimally invasive therapy

Shape	Bud			Inverted Cone S Type							Inverted Cone				Ball
PN	0883-1	883F-1	883V-1	0855-1	0856-1	0858-1	0859-1	0860-1	0861-1	0864-1	0865-1	0866-1	0868-1	0870-1	0872-1
ISO No.	022	020	019	013	018	021	010	015	017	014	016	025	020	024	014
Head length (mm)	5.0	5.0	5.0	1.5	2.0	2.3	2.2	3.6	3.5	1.4	1.6	1.7	4.4	7.0	1.0

Shape	Ball						Pear						Wheel		
PN	0874-1	874V-1	0875-1	875F-1	876X-1	0876-1	0878-1	0879-1	0882-1	882V-1	0891-1	892X-1	0892-1	0885-1	0886-1
ISO No.	016	015	018	017	024	022	015	018	021	020	025	034	033	044	052
Head length (mm)	1.2	1.3	1.4	1.4	1.8	1.8	4.5	4.5	5.0	5.0	6.5	5.0	5.0	1.4	0.8

Shape	Wheel, knife edge	Wheel, round end					Egg	Guide Groove Cutter	Corn		Special Shape				
PN	0888-1	0890-1	0894-1	895X-1	895C-1	0895-1	0893-1	893V-1	0896-1	0897-1	898X-1	0898-1	889V-1	0899-1	899V-1
ISO No.	028	050	034	047	046	046	029	029	026	036	034	033	028	035	035
Head length (mm)	0.8	1.2	1.3	1.9	1.8	1.8	4.9	4.9	3.6	4.0	5.0	5.0	5.6	5.7	5.7

Shape	MI Preparation					
PN	0944-1	0945-1	0946-1	0947-1	0948-1	0949-1
ISO No.	009	011	013	008	010	012
Head length (mm)	0.7	0.9	1.1	2.0	2.0	2.0



Six special shapes are available for minimally invasive treatment. They can be used for the fine preparation of wedge shaped defects up to occlusal cavities.



# Hybrid Points

Diamond points for cavity and crown stump preparation

Hybrid Points are the result of a development process combining both diamond and abrasive technologies. The special coating technology with natural diamond particles in standard grit guarantees a high cutting performance with a low contact pressure and secure cooling. Twelve different shapes and sizes are available for the different preparation steps.

<b>PN</b>	0901-1	0903-1	0905-1	0907-1	0909-1	0911-1	0913-1	0915-1	0917-1	0919-1	0921-1	0923-1
<b>ISO No.</b>	010	014	018	008	010	008	010	009	010	012	010	012
<b>Head length (mm)</b>	1.0	1.0	1.6	1.0	0.8	3.0	1.4	2.9	4.0	4.0	3.7	3.7
<b>Bur No.</b>	2	4	6	34	35	245	331	556/56	557/57	558/58	700/170	701/171

## BENEFITS

- Exact, uniform distribution of the diamond particles
- Sturdy stainless shank
- Low vibration grinding
- High grinding performance with little contact pressure and secure cooling

**Min<sup>-1</sup>** Recom. 300,000 - 450,000 / CP 0 - 0.8 N

PN	Quantity	Product
0901-1-0923-1	6 pcs.	Hybrid Points, FG shank
0900	1 pc.	Hybrid Points Kit

The instruments are individually packed in plastic containers.



The Hybrid Points Kit contains 12 Hybrid Points and 10 T&F Hybrid Points.

### Indications

- CHAIRSIDE
- Cavity and crown stump preparations

### Range of Application

Suitable for the following materials:  
Tooth enamel, porcelain

## info

The colour coding of the order number indicates the individual maximum speed:

- Cyan max. 450,000 rpm
- Blue max. 300,000 rpm

# T&F Hybrid Points



Ultrafine diamonds for finishing of tooth enamel, porcelain and composite

T&F Hybrid Points with their ultrafine diamond particles fulfill the requirements of modern, aesthetic dentistry regarding minimal corrections and best preparation for polishing.

The instruments are available in ten different sizes and shapes for the different preparation steps and are individually packed in plastic containers.

<b>PN</b>	0925-1	0927-1	0929-1	0931-1	0933-1	0935-1	0937-1	0939-1	0941-1	0943-1
<b>ISO No.</b>	018	014	018	014	018	012	009	012	013	011
<b>Head length (mm)</b>	1.6	3.0	3.5	3.0	3.5	4.0	3.7	4.2	6.0	8.0
<b>Bur No.</b>	7006	7104	7106	7404	7406	7803	7901	7903	LT1	LT2

## Indications

### CHAIRSIDE

Finishing of composites; very fine adjustments to tooth enamel and porcelain

## Range of Application

Suitable for the following materials:  
Tooth enamel, porcelain, composites



The T&F Hybrid Points Kit contains all 10 shapes.



Min<sup>-1</sup> Recom. 300,000 - 450,000 / CP 0 - 0.8 N

PN	Quantity	Product
0925-1-0943-1	6 pcs.	T&F Hybrid Points, FG shank
0950	1 pc.	T&F Hybrid Points Kit

## BENEFITS

- Exact, even distribution of very fine diamond particles
- Computerised manufacturing technique
- Consistent performance
- Ideal surface finish before final polishing
- Precise concentricity

# TPE Diamonds

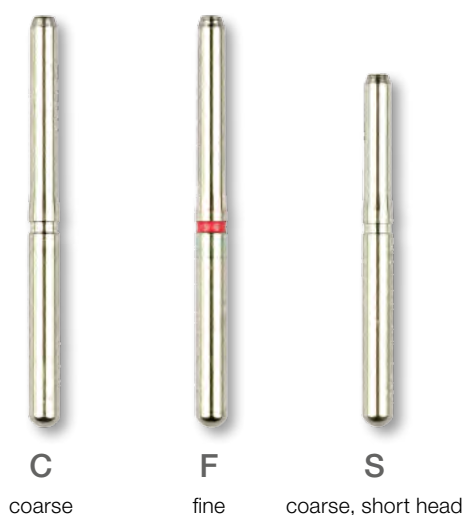


Tissue-protective, end-cutting diamonds for the subgingival shoulder preparation

Diamonds

A significant feature of these diamonds is the uncoated bevelling to the cutting surface, designed to avoid lacerating the adjacent tissue or undercutting the axial wall during a shoulder preparation. TPE Diamonds (Tissue-Protective, End-Cutting) are available in normal head length with fine and coarse grit and in short head length with coarse grit.

PN	680C-1	680F-1	682C-1	682F-1	682S-1	684C-1	684F-1	684S-1	686C-1	686F-1
ISO No.	010	010	012	012	012	014	014	014	016	016
Head length (mm)	9.0	9.0	9.0	9.0	6.0	9.0	9.0	6.0	9.0	9.0
Diameter (mm)	1.0	1.0	1.2	1.2	1.2	1.4	1.4	1.4	1.6	1.6



## BENEFITS

- Tissue-protective, end-cutting
- Exactly centred
- Long-lasting
- Consistent cutting performance

### Indications

#### CHAIRSIDE

- Coarse (C – no shank marking):  
for rapid reduction of the shoulder margin into the gingival sulcus
  - Fine (F – red banded shank):  
for smooth finishing of the shoulder margin, finishing subgingival shoulder preparation
- The short head (in coarse grit only) is recommended when accessibility is limited.

### Range of Application

Tooth enamel: shoulder preparation



The TPE Diamonds Kit contains nine selected diamonds.

**Min<sup>-1</sup>** Recom. 300,000 - 450,000 / CP 0 - 0.8 N

PN	Quantity	Product
680C-1- 686F-1	6 pcs.	TPE Diamonds, FG shank
0688	1 pc.	TPE Diamonds Kit



# Gingi Curettage Diamonds



For crown and bridge preparation and grinding of tooth stumps

The gold coloured standard grit FG diamonds are designed to establish a chamfered finish to the tooth surface in crown and bridge preparations, giving an ideal profile for precise impression taking. They are made with a 3° axial side taper, a 45° tip angle to the axis and a 1.52 mm point radius.

PN	C061-1	C062-1	C063-1	C081-1	C082-1	C083-1	C084-1	C085-1	C101-1	C102-1	C103-1
ISO No.	012	014	017	013	016	018	019	021	014	015	021
Head length (mm)	6.0	6.0	6.0	8.0	8.0	8.0	8.0	8.0	10.0	10.0	10.0



Min<sup>-1</sup> Recom. 160,000 - 450,000 / CP 0 - 0.8 N

PN	Quantity	Product
C061-1- C103-1	6 pcs.	Gingi Curettage Diamonds, FG shank
C200	1 pc.	Gingi Curettage Diamonds Kit

## Indications

■ CHAIRSIDE

Crown and bridge preparation, grinding of tooth stumps

## Range of Application

Suitable for the following materials:  
Tooth enamel and dentine



## BENEFITS

- Exact, even distribution of the diamond particles
- Precise concentricity
- Low vibration performance
- High cutting performance with low pressure and secure cooling

## info

The colour coding of the order number indicates the individual maximum speed:

- Cyan** max. 450,000 rpm
- Blue** max. 300,000 rpm
- Orange** max. 160,000 rpm



The Gingi Curettage Diamonds Kit contains the six most popular shapes C062-1, C081-1, C083-1, C084-1, C102-1, C103-1.

# CeraMaster Finishing & Polishing Kit



For finishing and polishing of all porcelain restorations

The kit includes all necessary rotary instruments for the systematic finishing and polishing of porcelain restorations in the dental practice.

## Contents

- Dura-Green: 1 each CN1, FL2, RE1
- Dura-White: 1 each CN1, FL2, RE1
- CeraMaster Coarse: 1 each knife, cup, minipoint
- CeraMaster: 1 each knife, cup, minipoint



PN	Quantity	Product
0332	1 pc.	CeraMaster Finishing & Polishing Kit, CA shank

# Porcelain Veneer Kit



Assortment for all working steps from preparation to lustre finish

The Porcelain Veneer Kit contains all necessary rotary instruments for the preparation of the tooth, for fine adjustments to porcelain and the final super polish to a high gloss.

## Contents

- Robot Points, standard: 1x 0835-1
- Robot Points, fine: 1 each 835F-1, 883F-1
- T&F Hybrid Points: 1 each 7404, 7803, 7901
- Dura-White: 1 each FL2, RE1
- Ceramisté Standard: 1 each knife, wheel
- Ceramisté Ultra: 1 each knife, wheel, cup
- Ceramisté Ultra II: 1 each knife, wheel, cup



PN	Quantity	Product
0300	1 pc.	Porcelain Veneer Kit, CA-FG shank combination

# Porcelain Laminate Polishing Kit



Systematic polishing of porcelain and enamel in three steps

With the polishers Ceramisté Standard, Ceramisté Ultra and Ceramisté Ultra II this kit offers the proper instruments for each working step from prepolishing to high-gloss polishing. The assortment of Ceramisté polishers with midpoint and cup shapes is ideal for harmonising the marginal seals between porcelain and tooth enamel. The kit is also suitable for polishing porcelain veneers.

## Contents

Ceramisté Standard: 4 each cup, midpoint

Ceramisté Ultra: 2 each cup, midpoint

Ceramisté Ultra II: 1 each cup, midpoint

PN	Quantity	Product
0317	1 pc.	Porcelain Laminate Polishing Kit, CA shank
0318	1 pc.	Porcelain Laminate Polishing Kit, FG shank



# Enamel Adjustment Kit



For adjustment and systematic polishing of tooth enamel and porcelain

The Enamel Adjustment Kit is indispensable in the dental practice for very fine adjustments of natural dentition or porcelain restorations and subsequent high-gloss polish in the patient's mouth. The choice of shapes is particularly well suited for working on difficult to reach areas, such as interproximal areas or occlusion surfaces.

## Contents

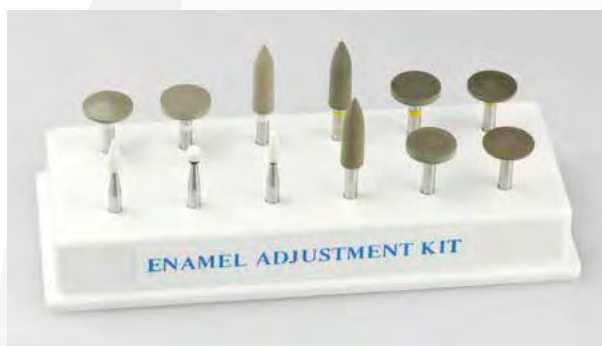
Dura-White: 1 each FL2, RD1, TC1

Ceramisté Standard: 1 each knife, wheel, bullet

Ceramisté Ultra: 1 each knife, wheel, bullet

Ceramisté Ultra II: 1 each knife, wheel, bullet

PN	Quantity	Product
0307	1 pc.	Enamel Adjustment Kit, CA shank



# BEAUTIFIL: A System for All Indications and Needs

Beautiful is a complete system of light-cured composite materials for all dental professionals who set great store by aesthetics, safety and efficiency in restorative dentistry.



Before restoration



After restoration

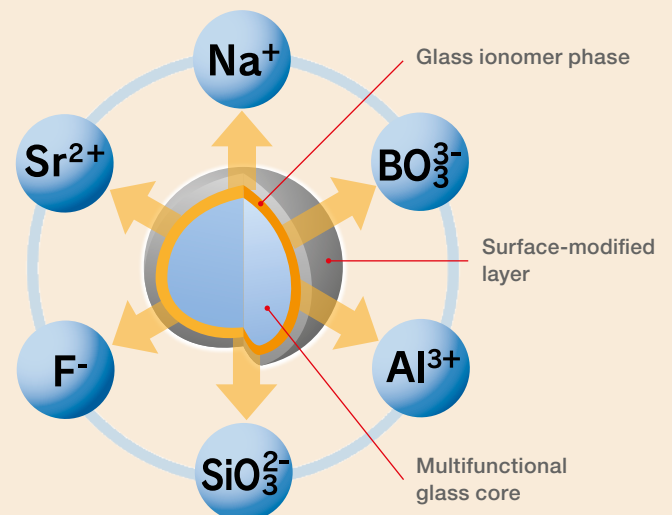
Whether small cervical or large Class I and II cavities, whether anterior or posterior teeth, whether flowable, packable or injectable: The Beautiful series of direct composite resins offers practitioners a modern and reliable restorative system covering all clinical indications of conservative/restorative dentistry.

## Benefits of the BEAUTIFIL series

- Multifunctional system for countless applications
- Sophisticated Giomer-based shade and material system
- Various consistencies and delivery forms
- Natural light transmission/diffusion and shade matching
- Anti-plaque effect
- Sustainable fluoride release and recharge
- Remarkable radiopacity
- High abrasion and fracture resistance

## Long-term protection

All Beautiful products are multifunctional composites of the Giomer category. They not only show excellent aesthetic and mechanical properties, but also help to protect the tooth thanks to their bioactive S-PRG filler.



The trimeric structure of the S-PRG filler particles forms a stable zone of interaction, designed to sustainably release and recharge ions at high concentrations. The filler releases fluoride and other bioactive ions – for effective long-term protection against recurrent caries by tooth structure remineralisation, plaque inhibition, and acid buffering and neutralisation.

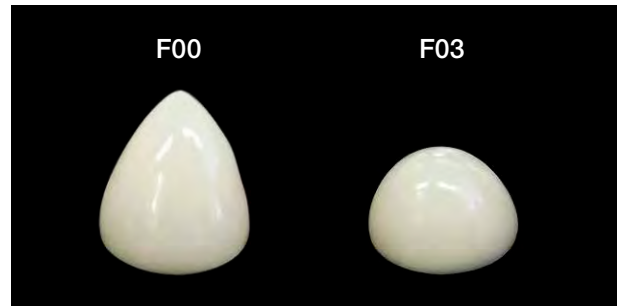
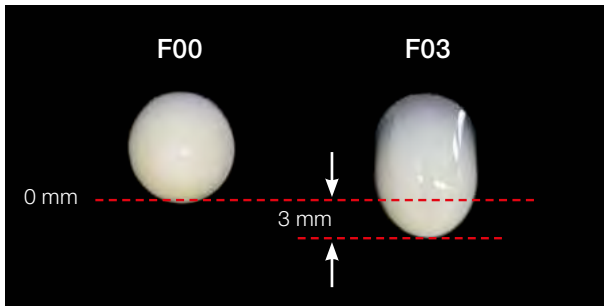
# BEAUTIFIL Flow Plus X

NEW!



Injectable hybrid composite in two viscosities

This durable composite restorative for both anterior and posterior teeth allows you to place direct restorations with an excellent self-levelling ability and outstanding physical properties, absolutely equivalent to those of conventional hybrid composites. Thanks to its nano S-PRG filler, Beautiful Flow Plus X not only helps to remineralise the adjacent tooth structure for sustainable caries prevention, but also easily polishes to a high and long-lasting lustre. It comes in two different viscosities, F00 and F03, for restorative build-up and filling.



These illustrations show the difference in flow behaviour between the two materials when placed on a vertical (left) or horizontal (right) mixing slab for one minute.

## Indications

### ■ F00 – ZERO FLOW

Excellent shape retention, ideal for build-up:

The flowability of F00 is so low that the paste is not deformed during layering. This easy-to-handle composite helps you to accurately restore the occlusal morphology, including cusps and marginal ridges. Main benefit: It flows well during application, but does not slump after sculpting.

### ■ F03 – LOW FLOW

Moderate shape retention and viscosity plus perfect adaptation: The self-levelling F03 paste thoroughly wets the cavity walls and is therefore ideal for filling. It can be used to line cavity floors, fill small occlusal cavities, or create cervical restorations.

## BENEFITS

Complete system for all conservative/restorative indications

Simplified handling in direct applications

Compatibility with all conventional bonding systems

Wide range of shades for aesthetic restorations

Optimal polishability and durable gloss

## Restoring the occlusal surface of a molar



Cavity preparation



Cavity lining with F03



Build-up of cusp ridges with F00



Occlusal morphology after filling



Postoperative result



F00 – absolutely stable (Zero Flow)

Shade	PN 2.2 g	Shade	PN 0.21 g
SYRINGE		TIPS, 20 pcs.	
A1	YE2301	A1	Y2401
A2	YE2302	A2	Y2402
A3	YE2303	A3	Y2403
A3.5	YE2304	A3.5	Y2404
A4	YE2305	A4	Y2405
B1	YE2306	B1	Y2406
B2	YE2307	B2	Y2407
C2	YE2308	C2	Y2408
D2	YE2309	D2	Y2409
SA0.5	YE2300	SA0.5	Y2400
SA0.50 (opacious A0.5)	YE2310	SA0.50 (opacious A0.5)	Y2410
A10 (opacious A1)	YE2311	A10 (opacious A1)	Y2411
A20 (opacious A2)	YE2312	A20 (opacious A2)	Y2412
Inc (Incisal)	YE2314	Inc (Incisal)	Y2414
BW (Bleaching White)	YE2315	BW (Bleaching White)	Y2415



F03 – moderate flow (Low Flow)

Shade	PN 2.2 g	Shade	PN 0.21 g
SYRINGE		TIPS, 20 pcs.	
A1	YE2321	A1	Y2421
A2	YE2322	A2	Y2422
A3	YE2323	A3	Y2423
A3.5	YE2324	A3.5	Y2424
A4	YE2325	A4	Y2425
B1	YE2326	B1	Y2426
B2	YE2327	B2	Y2427
C2	YE2328	C2	Y2428
D2	YE2329	D2	Y2429
SA0.5	YE2320	SA0.5	Y2420
A20 (opacious A2)	YE2332	A20 (opacious A2)	Y2432
A30 (opacious A3)	YE2333	A30 (opacious A3)	Y2433
Inc (Incisal)	YE2334	Inc (Incisal)	Y2434
BW (Bleaching White)	YE2335	BW (Bleaching White)	Y2435
MI (Milky)	YE2336	MI (Milky)	Y2436
CV (Cervical)	YE2337	CV (Cervical)	Y2450



PN	Quantity	Product
2000X	1 pc.	<b>Beautiful Flow Plus X Standard Kit</b> 1 syringe each at 2.2 g: Beautiful Flow Plus X F00 and F03, shade A2 and Beautiful Flow Plus X F00, shade A3
YE2303S	1 pc.	<b>Beautiful Flow Plus X 4 Syringes Kit F00</b> 2 syringes each at 2.2 g Beautiful Flow Plus X F00, shade A2 and A3
YE2323S	1 pc.	<b>Beautiful Flow Plus X 4 Syringes Kit F03</b> 2 syringes each at 2.2 g Beautiful Flow Plus X F03, shade A2 and A3
YE2300- YE2337	2.2 g	Beautiful Flow Plus X - syringe
YE2400- YE2450	0.21 g	Beautiful Flow Plus X - tips, 20 pcs.
Y2351	50 pcs.	Needle tips 20 G-L for Beautiful Flow Plus X

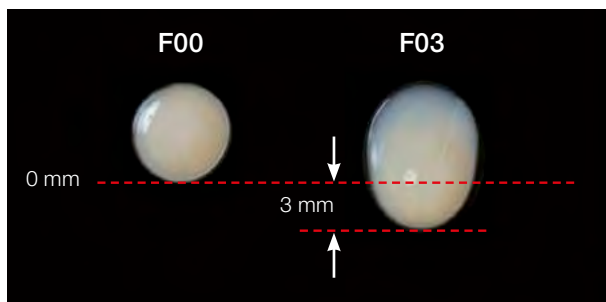
# BEAUTIFIL Flow Plus



Injectable anterior and posterior filling composite

Beautiful Flow Plus combines the application properties of a flow with the stability, durability and aesthetic of packable composites. It is approved for every classification – including occlusal surfaces and proximal margins. With improved handling properties allowing an injectable application, creating posterior restorations has never been easier. Moreover, the ability of Beautiful Flow Plus to release and recharge fluoride and its resistance to bacterial colonisation makes it ideal for the prevention of secondary caries.

Composites



Beautiful Flow Plus is available in two viscosities, "F00" is extremely stable and "F03" is moderately flowable.

Both are suited to the known flow indications, but as well to the occlusion-bearing areas which means they can also be used for class I and II fillings. With the 360° rotary finger grip and a replaceable fine cannula the Flow Plus composites are easily applied directly out of the syringes.

A wide range of colours and various opacities are available for aesthetic restorations in single and multi shade technique.

## BENEFITS

Approved for restorations of all cavity classes

High tensile and flexural strength

"Cone technique" application

Natural aesthetics with chameleon effect

Sustainable fluoride release and recharge

Exceptional radiopacity

### Indications

#### ■ F00 – ZERO FLOW

Shaping of occlusal anatomy, marginal ridges and intricate surface details, restorations of all cavity classes

#### ■ F03 – LOW FLOW

Restoration of pits, gingival boxes for surface modification; serves as a baseline





### F00 – absolutely stable (Zero Flow)

Shade	PN 2.2 g	Shade	PN 0.21 g
SYRINGE		TIPS, 20 pcs.	
A1	2001	A1	2201
A2	2002	A2	2202
A3	2003	A3	2203
A3.5	2004	A3.5	2204
A4	2005	A4	2205
B1	2062	B1	2206
B2	2063	B2	2207
C2	2064	C2	2208
D2	2065	D2	2209
SA0.5	2000	SA0.5	2200
SA0.50 (opacious A0.5)	2006	SA0.50 (opacious A0.5)	2211
A10 (opacious A1)	2007	A10 (opacious A1)	2212
A20 (opacious A2)	2008	A20 (opacious A2)	2213
Inc (Incisal)	2010	Inc (Incisal)	2215
BW (Bleaching White)	2011	BW (Bleaching White)	2216



### F03 – moderate flow (Low Flow)

Shade	PN 2.2 g	Shade	PN 0.21 g
SYRINGE		TIPS, 20 pcs.	
A1	2014	A1	2219
A2	2015	A2	2220
A3	2016	A3	2221
A3.5	2017	A3.5	2222
A4	2018	A4	2223
B1	2066	B1	2224
B2	2067	B2	2225
C2	2068	C2	2226
D2	2069	D2	2227
SA0.5	2013	SA0.5	2218
A20 (opacious A2)	2020	A20 (opacious A2)	2229
A30 (opacious A3)	2021	A30 (opacious A3)	2230
Inc (Incisal)	2023	Inc (Incisal)	2232
BW (Bleaching White)	2024	BW (Bleaching White)	2233
MI (Milky)	2026	MI (Milky)	2235
CV (Cervical)	2027	CV (Cervical)	2236



### Standard Kit

- 1 syringe each at 2.2 g Beautifil Flow Plus F00 and F03, shade A2
- 1 syringe each at 2.2 g Beautifil Flow Plus F00 and F03, shade A3

PN	Quantity	Product
2000S	1 pc.	Beautifil Flow Plus Standard Kit
2000-2027, 2062-2069	2.2 g	Beautifil Flow Plus - syringe
2200-2236	0.21 g	Beautifil Flow Plus - tips, 20 pcs.



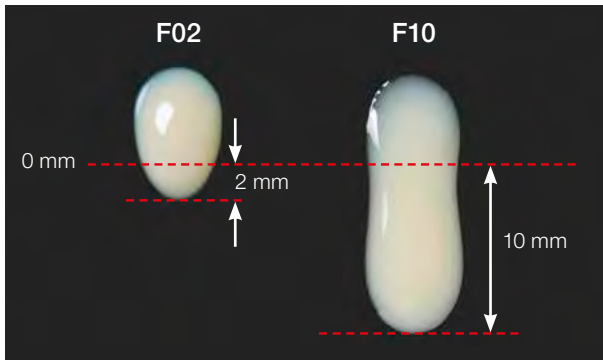
# BEAUTIFIL Flow



Flowable filling material for aesthetic restorations

Beautiful Flow is available in the two distinctive viscosities F02 (low flow) and F10 (high flow), its shades harmonise perfectly with Beautiful II.

The combination with the adhesive system FL-Bond II ensures a secure, highly fluoride releasing and aesthetic material system. A syringe specially developed for the dentist's needs assures the simple and hygienic application of the material without oozing of excess paste.



## Indications

- Small, shallow cavity restorations (class I to III and class V cavities)
- Deciduous restorations
- Base / liner under restorations
- Repair of fractured porcelain and composite restorations
- Fissure sealant
- Undercut blockout

Shade	PN 2 g
<b>F02 - LOW FLOW</b>	
A1	1431
A2	1432
A3	1433
A3,5	1434
A4	1435
A30 (opacious A3)	1449
G (Gum)	1451

Shade	PN 2 g
<b>F10 - HIGH FLOW</b>	
A1	1461
A2	1462
A3	1463
A3,5	1464
A4	1465
A30 (opacious A3)	1479
A3T (translucent)	1482

PN	Quantity	Product
1431-1451	2 g	Beautiful Flow F02 - syringe
1461-1482	2 g	Beautiful Flow F10 - syringe

## BENEFITS

- High water resistance and long-term stability
- Sustainable fluoride release and recharge
- Remarkable radiopacity
- Natural light diffusion
- Innovative syringe design with 360° rotary finger grip



# BEAUTIFIL Opaquer



Fluoride releasing flowable opaque

Beautiful Opaquer is used for masking discolourations, staining and metal colour as well as pulp capping. The flowable composite is available in the two shades “Universal Opaque” and “Light Opaque” and offers high coverage even with a thin layer.

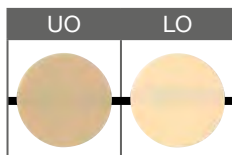


## Indications

Masking discolourations, spots, alloys and pulp capping



Shade	PN 2 g
<b>OPAQUER</b>	
UO (Universal Opaque)	1363
LO (Light Opaque)	1364



PN	Quantity	Product
1363-1364	2 g	Beautiful Opaquer - syringe

## BEAUTIFIL - Accessories

PN	Quantity	Product
1484	50 pcs.	Needle tips 20 G for Beautiful Flow, Beautiful Flow Plus and Beautiful Opaquer
Y2351	50 pcs.	Needle tips 20 G-L for Beautiful Flow Plus X
2037	50 pcs.	Needle tips 18 G for Beautiful-Bulk
1776AP	1 pc.	SHOFU Applicator gun for all Beautiful Tips



# BEAUTIFIL II LS (Low Shrinkage)



Low shrinking pasty composite for anterior and posterior restorations

Beautiful II LS, developed based on the proven Beautiful II, guarantees dentists minimum shrinkage and maximum aesthetics. The most remarkable feature of this pasty, light-cured universal composite is its polymerisation shrinkage of only 0.85 percent by volume; it helps to minimise the main problems of direct restorations, such as marginal gap formation and discolouration. Besides, Beautiful II LS features excellent polishability and optimally matches natural tooth shades.



The excellent polishability and natural shade reproduction of Beautiful II LS allow you to create highly aesthetic anterior restorations.

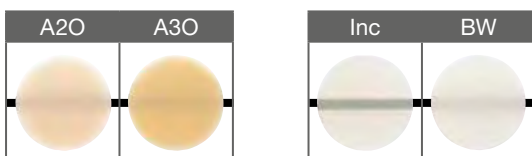
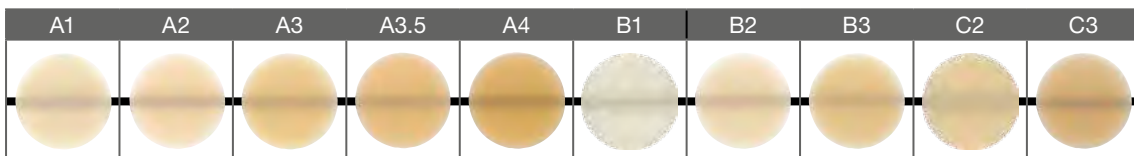
Beautiful II LS shows a natural light reflection, which facilitates an accurate restoration of the natural tooth structure and also leads to a well-balanced chameleon effect in both dentine and enamel. The material is easy to adapt to the tooth; it does not stick to the instrument and can be sculpted without difficulty.

## Indications

- Direct anterior and posterior restorations
- Repairs of restorations and dentures

## Shade palette

The Beautiful II LS materials allow you to meet all aesthetic requirements in both multi-layer and single-layer techniques. The shades are identical with those of Beautiful II and characterised by high shade stability.



The shades A1-C3 correspond to the VITA® Classical Shade System.

## BENEFITS

- Low shrinkage (< 1 %) and shrinkage stress
- Excellent polishability and long-lasting gloss
- High abrasion resistance and antagonist-friendly surface hardness
- Natural light transmission and diffusion
- Sustainable fluoride release and recharge
- Shade range identical with Beautiful II

PN	Quantity	Product
Y2270S	1 pc.	<b>Beautiful II LS - Basic Set Syringes</b> 2 syringes at 4 g, shade A3, 1 syringe each at 4 g, shades A2 and A3.5
Y2270T	1 pc.	<b>Beautiful II LS - Basic Set Tips</b> 40 tips at 0.25 g, shade A3, 20 tips each at 0.25 g, shades A2 and A 3.5
Y2270-Y2283	4 g	Beautiful II LS - syringe
Y2284-Y2297	0.25 g	Beautiful II LS - tips, 20 pcs.

Shade	PN 4 g
SYRINGE	
A1	Y2270
A2	Y2271
A3	Y2272
A3.5	Y2273
A4	Y2274
B1	Y2275
B2	Y2276
B3	Y2277
C2	Y2278
C3	Y2279
A20 (opacious A2)	Y2280
A30 (opacious A3)	Y2281
Inc (Incisal)	Y2282
BW (Bleaching White)	Y2283

Shade	PN 0.25 g
TIPS, 20 pcs.	
A1	Y2284
A2	Y2285
A3	Y2286
A3.5	Y2287
A4	Y2288
B1	Y2289
B2	Y2290
B3	Y2291
C2	Y2292
C3	Y2293
A20 (opacious A2)	Y2294
A30 (opacious A3)	Y2295
Inc (Incisal)	Y2296
BW (Bleaching White)	Y2297

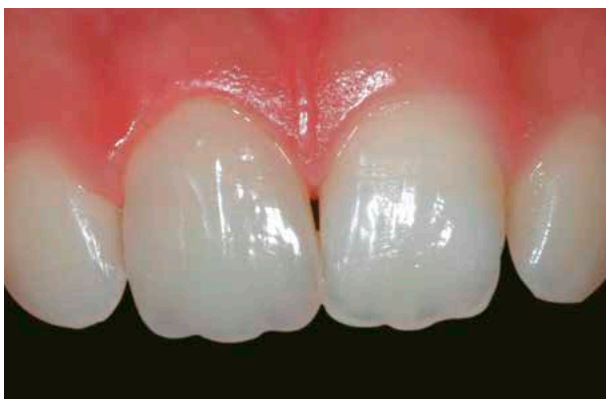


## BEAUTIFIL II



Continually fluoride releasing aesthetic restorative material

Beautifil II convinces with its aesthetic appearance with excellent colour harmonisation, exceptional handling properties and its anti-plaque effect. Due to its bioactive S-PRG filler this composite of the Giomer category has the property to release and recharge fluoride, based on the concentration of fluoride in the mouth.



The patented filler technology integrates the light transmission and diffusion properties of natural teeth, thus allowing virtually invisible restorations with even one layer.

The surface hardness of the glass fillers used as raw material in Beautifil II is similar to that of enamel and is antagonist-friendly. The material is therefore suitable for both anterior and posterior teeth.

## BENEFITS

- Light transmission and diffusion properties of natural teeth
- Colour stability
- Anti-plaque effect
- Tooth-like fluorescence
- Exceptional radiopacity
- Sustainable fluoride release and recharge
- Reliable strength and longevity

# BEAUTIFIL II (continued from page 65)

Continually fluoride releasing aesthetic restorative material

## Indications

Direct restorations that require optimal aesthetics and biocompatibility, like:

- Restorations of Class I - V cavities
- Restoration of cervical erosion and root caries
- Repair of fractured incisal edges
- Veneers and posts
- Direct cosmetic tooth corrections



## BEAUTIFIL II - Sets and Single Components



### 6 Color Set

- 6 syringes Beautifil II, 4.5 g each (A2, A3, A3.5, B2, A30, Inc)
- 1 Dura-White (FL2) • Super-Snap Single Kit • OneGloss Trial Set
- paper pad

### Tips - 6 Color Set

- 120 tips Beautifil II, 0.25 g each (20 pcs. each A2, A3, A3.5, A30, B2, Inc)
- 1 Dura-White (FL2) • Super-Snap Single Kit • OneGloss Trial Set
- paper pad

### Cosmetic Kit

- 3 syringes Beautifil II (A2, A3, Inc), 4.5 g each
- 1 syringe Beautifil Flow F02 (A2), 2 g • 1 syringe Beautifil Opaquer (L0), 2 g
- 1 Dura-White (FL2) • Super-Snap Single Kit • OneGloss Trial Set
- 10 syringe tips • paper pad

Shade	PN 4.5 g
<b>SYRINGE</b>	
A1	1401
A2	1402
A3	1403
A3.5	1404
A4	1405
B1	1408
B2	1409
B3	1410
C2	1412
C3	1413
Inc (Incisal)	1415
BW (Bleaching White)	1416
A20 (opacious A2)	1419
A30 (opacious A3)	1420

Shade	PN 0.25 g
<b>TIPS, 20 pcs.</b>	
A1	1752
A2	1753
A3	1754
A3.5	1755
A4	1756
B1	1759
B2	1760
C2	1763
Inc (Incisal)	1766
BW (Bleaching White)	1767
A20 (opacious A2)	1770
A30 (opacious A3)	1771

PN	Quantity	Product
1775	1 pc.	Beautifil II - 6 Color Set
1776	1 pc.	Beautifil II Tips - 6 Color Set
1777	1 pc.	Beautifil II - Cosmetic Kit
1401-1420	4.5 g	Beautifil II - syringe
1752-1771	0.25 g	Beautifil II - tips, 20 pcs.
1424	1 pc.	Beautifil II shade guide
1306	1 pc.	FL-Bond II Kit (see page 75)
0180	1 pc.	OneGloss Kit (see page 23/24)
0223	12 pcs.	Dura-White FL2 (see page 13)
0500	1 pc.	Super-Snap Rainbow Techn. Kit (see page 28)

# BEAUTIFIL II Gingiva & Enamel



## Gingiva and enamel shades

The two new components added to the Beautifil composite line allow dentists to restore pink-white aesthetics and produce truly lifelike restorations.

The five gingiva shades, which can be blended with each other, help to create true-to-nature soft tissue areas characterised by great depth and invisible transitions to the tooth. The four enamel shades are ideal for highly aesthetic anterior restorations. They allow users to easily create polychromatic restorations and invisibly repair restorations and dentures.



Clinical case, before and after restoration with Beautifil II Gingiva Light Pink

### Beautifil II Gingiva

For the reproduction of gingival areas

- Indicated in cases of gingival recession, exposed abutments and crown margins, root erosion and missing papillae
- Shades can be layered and blended for aesthetic solutions without the need for surgery
- Perfect for Class V restorations



Clinical case, before and after restoration with Beautifil II Enamel

### Beautifil II Enamel

For direct anterior restorations

- Polychromatic restorations thanks to chameleon effect
- Cost-effective alternative to porcelain veneers
- Highly aesthetic restorations achievable by layering and blending the shades
- Based on porcelain shade concept – for easy shade matching

Shade	PN 2.5 g
<b>GINGIVA</b>	
Gum-LP (Light Pink)	Y2256
Gum-DP (Dark Pink)	Y2257
Gum-V (Violet)	Y2258
Gum-Br (Brown)	Y2259
Gum-Or (Orange)	Y2260

Shade	PN 2.5 g
<b>ENAMEL</b>	
T (Translucent)	Y2250
HVT (High-Value Tr.)	Y2251
LVT (Low-Value Tr.)	Y2252
AM (Amber)	Y2253

PN	Quantity	Product
Y2256-Y2260	2.5 g	Beautifil II Gingiva - syringe
Y2250-Y2253	2.5 g	Beautifil II Enamel - syringe



# BEAUTIFIL-Bulk



One bulk-fill system – two viscosities for all indications of conservative treatment

Packable or flowable: with the development of the Beautifil-Bulk system dentists can place increments up to 4 mm in thickness. This system features not only low shrinkage stress, but also effective optical diffusion processes for superior shade matching and aesthetics.

All Beautifil-Bulk products are multifunctional Giomer composites with bioactive filler particles, characterised by sustainable recharge and release of fluoride, anti-plaque effect, acid neutralisation and tooth structure remineralisation. The special filler structure and the glass core enable a natural light transmission and diffusion and a balanced chameleon effect in the dentine and enamel area. Hence exceptionally aesthetic restorations can be achieved even with one shade only.

Composites

## BENEFITS

Two viscosities – packable and flowable

Low polymerisation shrinkage and shrinkage stress

Excellent depth of cure for increments up to 4 mm in thickness

Optimal shade match (chameleon effect)

High radiopacity

### Indications

■ The slightly viscous **Beautifil-Bulk Flowable** can be easily and precisely applied directly from the syringe. It is very suitable as base liner for class I and II cavities, or as liner and filling material for small posterior cavities.

■ **Beautifil-Bulk Restorative** is a packable, excellent sculptable material and stands occlusal stress up to 340 MPa. Its pasty, non sticky consistency makes it ideal for direct posterior restorations.



Prepared cavity after conditioning



First big increment with Beautifil-Bulk Flowable as liner



Final occlusal cap filling with Beautifil-Bulk Restorative

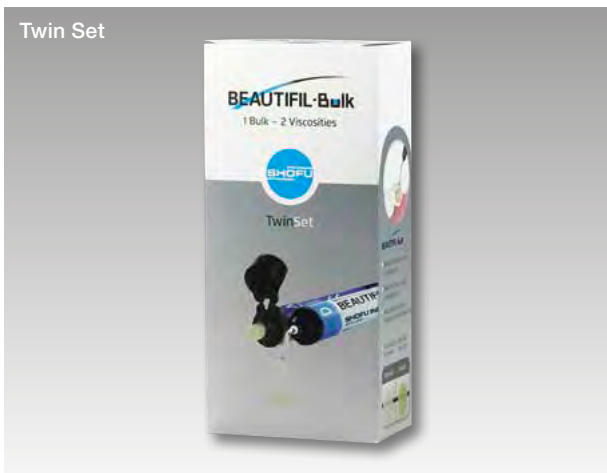


## BEAUTIFIL-Bulk Flowable

Shade	PN	Shade	PN
	2.4 g		0.23 g
SYRINGE		TIPS, 20 pcs.	
Universal	2030	Universal	2028
Dentin	2031	Dentin	2029

## BEAUTIFIL-Bulk Restorative

Shade	PN	Shade	PN
	4.5 g		0.25 g
SYRINGE		TIPS, 20 pcs.	
Universal	2034	Universal	2032
A	2035	A	2033



## Twin Set

- 2 syringes Flowable each at 2.4 g, shades Universal and Dentin
- 2 syringes Restorative each at 4.5 g, shades Universal and Dentin

PN	Quantity	Product
2028-2029	0.23 g	Beautifil-Bulk Flowable - tips, 20 pcs.
2030-2031	2.4 g	Beautifil-Bulk Flowable - syringe
2032-2033	0.25 g	Beautifil-Bulk Restorative - tips, 20 pcs.
2034-2035	4.5 g	Beautifil-Bulk Restorative - syringe
2030S	1 pc.	Beautifil-Bulk Twin Set
2037	50 pcs.	Needle tips 18 G for Beautifil-Bulk





# BeutiBond Universal

NEW!



Multifunctional light-cured bonding system

Thanks to its special composition, this universal adhesive system combines superior bond strength and easy handling with high versatility. It is indicated not only for direct composite restorations and intraoral repairs, but also for indirect restorations including veneers and composite core build-ups.



Before preparation



Application of BeutiBond Universal



After restoration and light-curing

Bonding Systems

BeutiBond Universal is a single-component adhesive allowing you to etch, prime and bond in one step. The filler and HEMA-free formulation facilitates water removal, forms an adhesive film only 5 µm in thickness (making it suitable for anterior restorations), and ensures excellent adhesion to enamel and dentine, composites, zirconia and alumina ceramics, and both precious and nonprecious alloys.

Two accessories complete the system: BeutiBond Universal DC Activator for the pretreatment of resin cements and resin build-up materials and the activation of dual curing; and BeutiBond Universal CR Enhancer for the priming of silicate glass and lithium silicate glass ceramics and cured composites.

## Indications

- Direct restorations with light-cured composites
- Intraoral repair of fractured restorations with light-cured composites
- Cementation of indirect restorations with light or dual-cured resin cements
- Core build-ups with light or dual-cured resin materials

## BENEFITS

High bond strengths to enamel and dentine

Minimised technique sensitivity thanks to filler and HEMA-free formulation

Thin adhesive film (5 µm) for aesthetic restorations with invisible margin lines

Universal adhesive system suitable for use with resin cements and resin build-up materials



PN	Quantity	Product
Y2440	1 pc.	<b>BeutiBond Universal Adhesive Kit</b> BeutiBond Universal Adhesive 6 ml (bottle), 50 pcs. disposable brush fine, 25 pcs. V-dish
Y2441	6 ml	BeutiBond Universal Adhesive
Y2443	3 ml	BeutiBond Universal DC Activator
Y2444	3 ml	BeutiBond Universal CR Enhancer

# FL-Bond II



## Self-etching fluoride releasing bonding system

FL-Bond II is a self-etching fluoride releasing two-step adhesive system which features an excellent bond to both enamel and dentine and provides a secure marginal seal. The system is characterised by its excellent handling and enhanced biocompatible properties. The moderately viscous consistency of FL-Bond II allows a convenient application and is particularly stable with sloping cavity walls. This guarantees an even film thickness at all preparation surfaces and a stable bond strength.

### Indications

- Adhesive bonding of any composite to tooth structure
- Pretreatment of the tooth structure prior to the application of resin cements
- Repair of restorations

## BENEFITS

- Simple and quick 2-step handling
- Optimal viscosity and adhesion
- Radiopacity for accurate diagnostics
- Fluoride release and recharge
- Durable bonding strengths



PN	Quantity	Product
1306	1 pc.	<b>FL-Bond II Kit</b> Primer 5 ml, Bonding Agent 5 ml, MicroBrush pink and yellow, 25 pcs. each, 1 dispo dish, 1 plastic cover
1307	5 ml	FL-Bond II Primer
1308	5 ml	FL-Bond II Bonding Agent
1309	6 ml	FL-Bond II Etchant

### Application

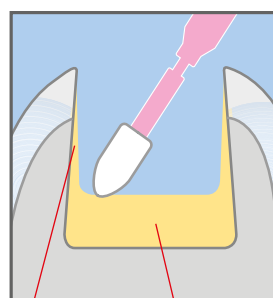
#### STEP 1: PRIMING

The FL-Bond II Primer contains a new effective adhesive promoting monomer and a new photo initiator. The self-etching Primer prepares the enamel and dentine surfaces while eliminating the need for separate etching with phosphoric acid.

#### STEP 2: BONDING

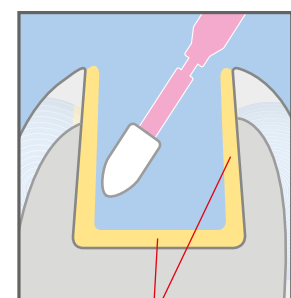
The FL-Bond II Bonding Agent incorporates fluoride containing S-PRG fillers which offer a permanently available protection against secondary caries by an optimised remineralisation of the adjacent hard tooth structure. Because of its high filler loading FL-Bond II provides exceptional resistance against abrasion and effectively avoids a marginal washout along with durable sealing.

#### Low viscosity (other bonding agent)



Extremely thin bonding layer  
Collection of liquid at cavity floor

#### Moderate viscosity (FL-Bond II)



Equal bonding layer thickness

## info

The adhesive etching agent FL-Bond II Etchant is especially suited for etching before the use of self-etching bonding systems on enamel; it only contains approximately 7% phosphoric acid.

# CRB – Ceraresin Bond



For all repairs of chipped porcelain or composite restorations

With the Ceraresin Bond system you have the option to securely and durably bond various materials intra and extraorally. For example, CRB can be used for extending porcelain restorations quickly and efficiently with light-curing materials. Moreover, CRB combines cold-curing resins with light-curing veneering material, as well as different light-curing veneering composites with each other. Also there are no limits to individualising denture teeth with light-curing veneering material.

## Used as adhesive when

- ceramic restorations are to be repaired with filling composite, veneering composite, or denture base material
- porcelain or resin teeth are to be modified and repaired with filling composite, veneering composite, or denture base material
- dental restorations are made from or repaired with filling composite, denture base material or veneering composite
- dental restorations made of dental ceramic, veneering composite, filling composite or denture base material are to be repaired



PN	Quantity	Product
1741	1 pc.	<b>CRB Kit:</b> CRB I 16 ml, CRB II 5 ml, MicroBrush yellow and pink, 25 pcs. each, 5 dispo dishes



# SHOFU Universal Primer

NEW!



Primer for bonding resin to metal, zirconia or alumina

SHOFU Universal Primer reliably and durably bonds resins to all dental alloys, zirconia and alumina – even without the use of retention beads!

The primer can be applied intraorally and always ensures excellent bond strengths when used in combination with the light-cured opaque pastes of the SHOFU Universal Opaque system.

## BENEFITS

Strong bond without the need for retention beads

For all dental alloys and zirconia-based frameworks

For intraoral and extraoral use

Easy and quick handling without any additional equipment

SHOFU Universal Primer can be used to treat a wide range of substrates, including all precious and nonprecious alloys, zirconia and alumina, and features easy and efficient handling. It is the universally reliable solution for bonding to CAD/CAM frameworks.



Primer

### Indications

- Application of SHOFU Universal Opaque to metal frameworks
- Intraoral and extraoral repair of fractured restorations
- Bonding of denture base resin to metal bases or attachments
- Cementation of gold/zirconia inlays, crowns and bridges with resin cement
- Bonding of resin to orthodontic appliances

PN	Quantity	Product
Y0060	5 ml	SHOFU Universal Primer



SHOFU Universal Primer



SHOFU Universal Pre-Opaque



SHOFU Universal Opaque

# BeutiCem SA



Fluoride releasing self-adhesive resin cement

BeutiCem SA is a universally usable, self-etching and self-adhesive resin cement capable of releasing and recharging fluoride thanks to its S-PRG filler particles. This dual-cure luting material easily, quickly and reliably cements all indirect restoratives and all types of restorations suitable for adhesive cementation to natural tooth structure, without the need for separate phosphoric acid etching, priming or bonding of enamel and dentine.

## Consistent mixing quality

BeutiCem SA is available in two colours, Clear and Ivory, and comes in a dual-barrel syringe with auto-mix tips, consistently mixing the cement at the correct ratio and without any air inclusions.

The ideal viscosity of this non-sticky cement ensures controlled delivery and accurate restoration placement.



## BENEFITS

Durable bond to a wide range of materials

No need for separate phosphoric acid etching, priming or bonding of enamel and dentine

Outstanding physical properties

High translucency for aesthetically challenging cases

Low layer thickness (11.8  $\mu\text{m}$ )

Thanks to its thixotropic flow behaviour, the material forms an even, bubble-free layer which is only 11.8  $\mu\text{m}$  thick, making restoration margins virtually undetectable.

Careful control of the refractive index provides outstanding translucency for aesthetically challenging cases. And excellent radiopacity facilitates diagnoses in future examinations.

## Indications

- All-ceramic inlays, onlays, crowns and bridges
- Dentures made with precious, semiprecious and nonprecious alloys, also with titanium
- PFM crowns and bridges
- CAD/CAM restorations
- Indirect composite inlays, onlays, crowns and bridges
- All-ceramic, composite and metal restorations on implant abutments
- Various kinds of metal and composite post & cores



PN	Quantity	Product
3213	5 ml	BeutiCem SA, "Clear", auto-mixing, 10 mixing tips
3214	5 ml	BeutiCem SA "Ivory", auto-mixing, 10 mixing tips

# ResiCem



## Universal dual-cure cementation system

ResiCem is a radiopaque, dual-cure, resin-based adhesive cementation system with self-conditioning Primers A and B, suitable for all types of indirect restorative materials.

ResiCem comes in a convenient 5 ml dual-barrel syringe with mixing tips for consistently perfect dosing, mixing and dispensing onto or into the restoration. Thanks to its advantageous consistency, the cement paste flows very easily even under light pressure, which facilitates the placement of the restoration into its final position. The material can be applied in films as thin as nine micrometres, so that the cementation will not cause any bite elevation or compromise the marginal integrity initially achieved.



Immediately after placing of the restoration



2 minutes after placing of the restoration

## BENEFITS

Self-conditioning Primers A and B

Efficient handling

Very good marginal integrity

Consistently high bond strengths – irrespective of the curing method used

Easy application and excess removal

PN	Quantity	Product
3220	1 pc.	<b>ResiCem Basic Kit</b> ResiCem paste "Clear", auto-mixing, 2x 5 ml, Primer A 3 ml, Primer B 2.5 ml, Microtip fine (1 handle, 50 tips), 20 mixing tips, dispo dish
3221	5 ml	ResiCem paste "Clear", auto-mixing, 10 mixing tips
3222	5 ml	ResiCem paste "Ivory", auto-mixing, 10 mixing tips
3227	3 ml	ResiCem Primer A
3228	2.5 ml	ResiCem Primer B
Y0005	5 ml	HC Primer (see page 78)
Y0060	5 ml	SHOFU Universal Primer (see page 77)
3232	5 ml	AZ-Primer (see page 79)
3234	5 ml	Porcelain Primer (see page 79)

## Indications

- Adhesive cementation of alumina and zirconia restorations, porcelain or indirect composite veneers, crowns, bridges, inlays, onlays and indirect metal-reinforced restorations
- Cementation of various types of posts or core build-up materials



# Glaslonomer Cement CX-Plus



Radiopaque luting cement

CX-Plus is recommended for luting posts, crowns, bridges, inlays and brackets; it is ideally suited for the bonding of long span bridges. It offers a prolonged working time and shows a lower sensitivity to moisture during the initial setting.



PN	Quantity	Product
1166	1 pc.	<b>CX-Plus Set</b> powder 35 g, liquid 17 ml
1167	35 g	CX-Plus powder
1168	17 ml	CX-Plus liquid
1169	1 pc.	<b>CX-Plus TripleKit</b> 3x powder 35 g, 3x liquid 17 ml
1187	1 pc.	<b>CX-Plus Mini-Set</b> powder 15 g, liquid 8 ml

# HY-Bond Polycarboxylate Cement



Luting cement

HY-Bond Polycarboxylate Cement contains a unique tannin-fluoride additive to help sealing the dentinal tubules.



PN	Quantity	Product
1160	1 pc.	<b>HY-Bond Polycarboxylate Cement Set</b> powder 60 g, liquid 33 ml, spoon
1161	60 g	HY-Bond Polycarboxylate powder
1162	33 ml	HY-Bond Polycarboxylate liquid

## Indications

- Direct luting of crowns, bridges and inlays
- Lining of cavities and lesions

## BENEFITS

- Chemical bond of tooth structure and metal
- High adhesive strength
- Radiopaque
- Contains tannin-fluoride

# HY-Bond Temporary Cement – Soft



Temporary polycarboxylate cement

With this temporary cement type the polycarboxylate cement base was combined with a tannin-fluoride additive. It is ideally suited for provisional bonding.



## Indications

- Temporary cementing of provisionals
- Indirect pulp capping, temporary sealing after cavity preparation
- Temporary cementing of deciduous cavities

## BENEFITS

- Short setting time
- Eugenol-free
- Odourless and tasteless
- Easy to remove
- Easy to mix and convenient to handle
- Contains a patented tannin-fluoride additive (HY-Agent)

PN	Quantity	Product
1173	1 pc.	HY-Bond Temporary Cement - Soft Set powder 125 g, liquid 60 ml, spoon





# BeautiSealant



Self-etching fluoride releasing pit & fissure sealant

This fissure sealant is simple and gentle on the tooth substance and consists of the BeautiSealant primer and the BeautiSealant paste. The self-etching primer shortens the conventional treatment time by eliminating the treatment steps of etching and rinsing.



Fissure Sealing

The treatment is gentle, as the demineralised and dehydrated effect of the phosphoric acid etching on healthy tooth substance is avoided.

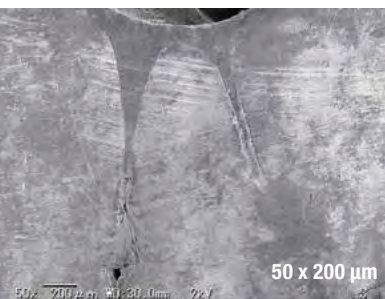
- BeautiSealant achieves a shear bond strength of 19.5 MPa, which is comparable or even better than fissure sealing with phosphoric etching.
- The BeautiSealant paste continuously releases fluoride.

## BENEFITS

- Ideal handling and viscosity
- Eliminate trapped air due to bubble-free consistency
- Radiopacity equal to dentine: 0.92 mm Al
- High shear bond strength without etch and rinse technique
- Application in four easy steps within 30 seconds

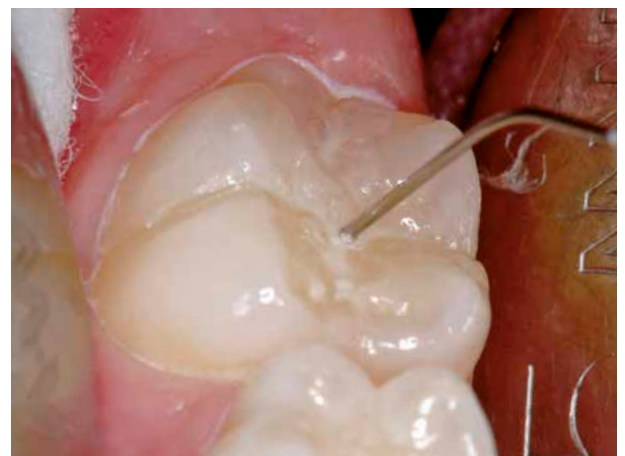
### Indications

Preventive pit and fissure sealant of deciduous and permanent teeth



### Secure Seal

The paste has an optimal flow and bubble-free consistency and is easy to apply, hence completely filling and permanently sealing gaps and voids. A specially developed ultrafine 27 gauge cannula (ø 0.4 mm) for precise application is part of the set.



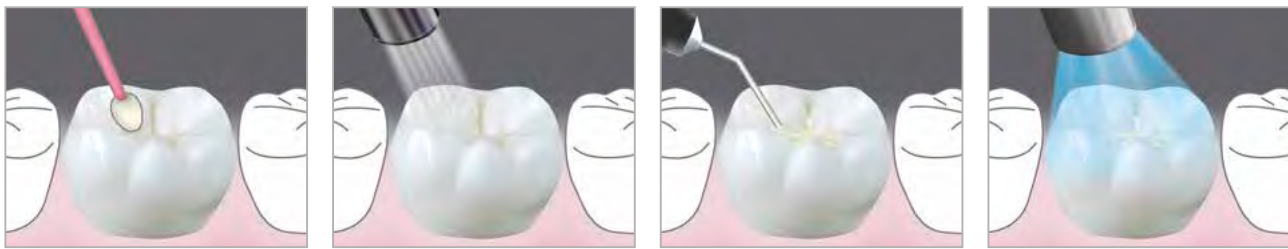
## info

The fluoride free Pressage paste is recommended for the professional cleaning before the fissure sealing

PN	Quantity	Product
1798	1 pc.	<b>BeutiSealant Set</b> BeutiSealant paste 1.2 g, BeutiSealant primer 3 ml, 15 needle tips, 50 pcs. Microbrush Fine (pink), 25 pcs. V-dish
1799	1.2 g	BeutiSealant paste
1800	3 ml	BeutiSealant primer
1794	50 pcs.	BeutiSealant needle tips 27 G



### Four easy steps

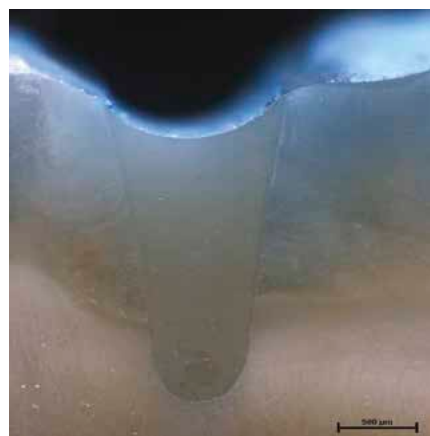


- 1 Apply primer to clean tooth and leave for 5 seconds
- 2 Gently air dry for 5 seconds
- 3 Apply paste
- 4 Light-cure with a halogen (20 seconds) or LED (10 seconds) curing light

## BEAUTIFIL Flow F10

Flowable composite material for tight and bubble-free restorations

Beautiful Flow F10 is especially suitable for fissure sealing due to its user friendly viscosity and the caries protective effect of the fluoride release.



Source: University of Giessen, Germany  
 "Sind unterschiedliche Flowables zur Versiegelung minimalinvasiv erweiterter Fissuren geeignet?"  
 ("Are different flowables suitable for minimally invasive extended fissure sealing?")

Detailed information on page 62

This cross-section of a tooth subjected to dye penetration testing after extended fissure sealing shows a tight and bubble-free restoration.

# Resin Glaze



Temporary surface gloss coating

Resin Glaze is a light-cured, surface gloss coating material for temporary restorations. The bonding of the material (Liquid) is increased when used in conjunction with the related Primer.

## Indications

For temporary glazing of artificial resin teeth, acrylic denture base materials, CAD/CAM PMMA materials, CAD/CAM hybrid ceramic materials, indirect composite resins, provisional materials



PN	Quantity	Product
Y0003	6 ml	Resin Glaze, Primer
Y0004	6 ml	Resin Glaze, Liquid

## Merssage ■ Pressage

Prophylaxis pastes for all indications

The fluoride containing Merssage pastes remove plaque and provide a smooth and polished tooth surface. The fluoride free Pressage paste is used before bleaching or fissure sealing



## DirectDia Paste

Diamond impregnated polishing paste for intra and extraoral high gloss polish

The diamond impregnated paste is used for polishing and cleaning natural teeth and for the removal of discolourations of all restorative materials



## OneGloss

For composite and enamel

All OneGloss instruments are ideal for the removal of surface discolourations without damaging the enamel, for enamel polishing after scaling and for taking off composite or cement residue after the removal of brackets



